

# PACIFIC BUSINESS PARK

FOR LEASE: 10,806 SF

201 FRONTAGE RD N | PACIFIC, WA 98047



## LEASE INFORMATION

<b>Unit:</b>	201-A
<b>Total Available:</b>	10,806 SF
<b>Office Size:</b>	~2,400 SF on 2 floors
<b>Warehouse Size:</b>	8,406 SF
<b>Loading:</b>	5 GL (oversized 14'x16')
<b>Lighting:</b>	LED in warehouse
<b>Clear Height:</b>	18'
<b>Sprinklers:</b>	Yes
<b>Power:</b>	480 v 3-phase
<b>Lease Rate:</b>	Call Broker
<b>NNN Rate:</b>	\$0.28/SF/Month
<b>Available:</b>	5/1/25



**GRIFFIN DAY**

206.787.1474

gday@neilwalter.com

**JIM HONAN**

206.787.1464

jhonan@neilwalter.com

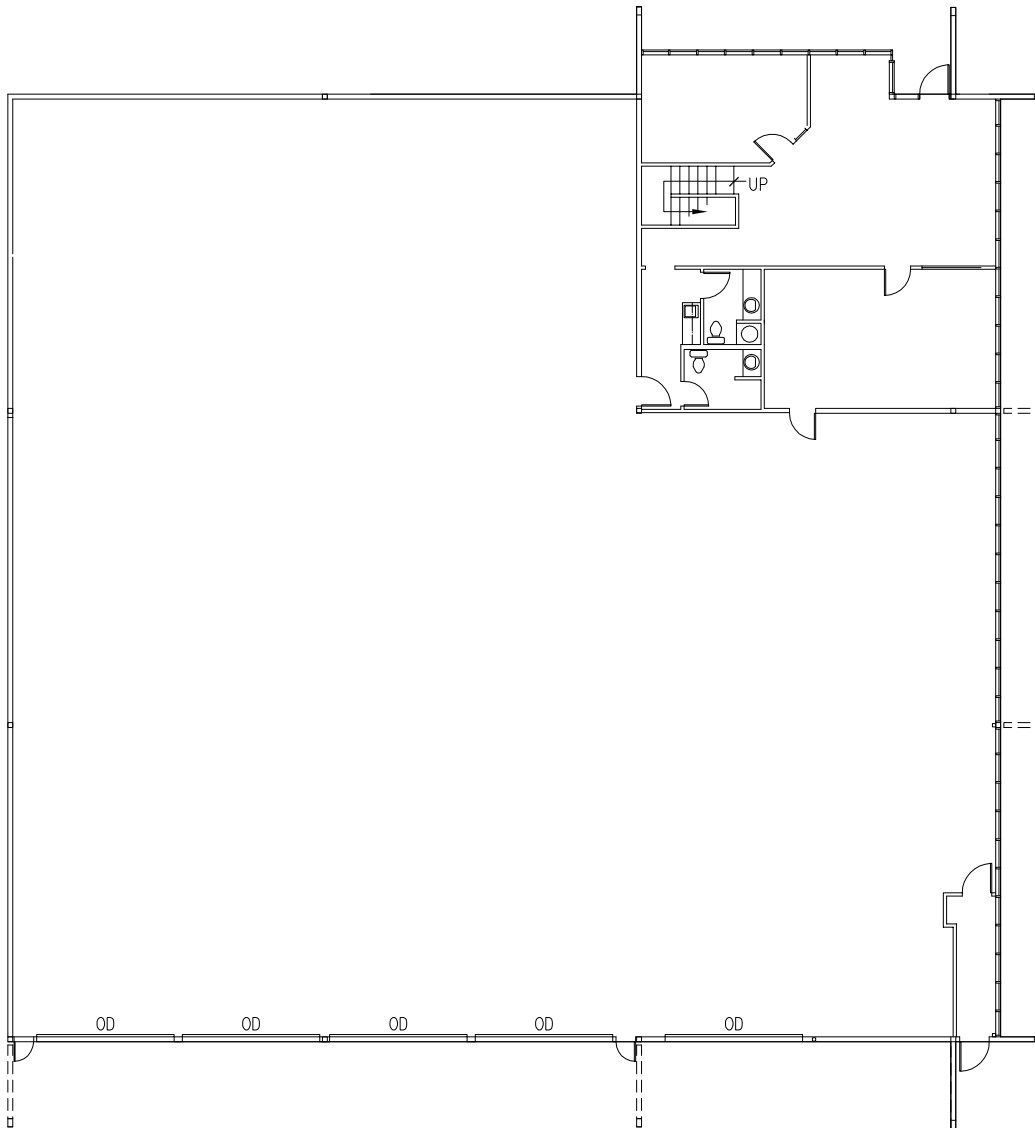
All information references in this document are approximate. The information contained herein is contained from sources deemed reliable. It is provided without representation, warranty, or guarantee, expressed or implied as to accuracy. Prospective buyer or tenant should conduct its own independent investigation relating to the property, government codes and regulations, allowed uses, and all other matters, regardless of whether they are referred to or contained in this document.

# PACIFIC BUSINESS PARK

201 FRONTAGE RD N | PACIFIC, WA 98047



## MAIN FLOOR



**GRIFFIN DAY**  
206.787.1474  
gday@neilwalter.com

**JIM HONAN**  
206.787.1464  
jhonan@neilwalter.com

550 S Michigan St  
Seattle, WA 98108  
206.787.1800  
www.neilwalter.com

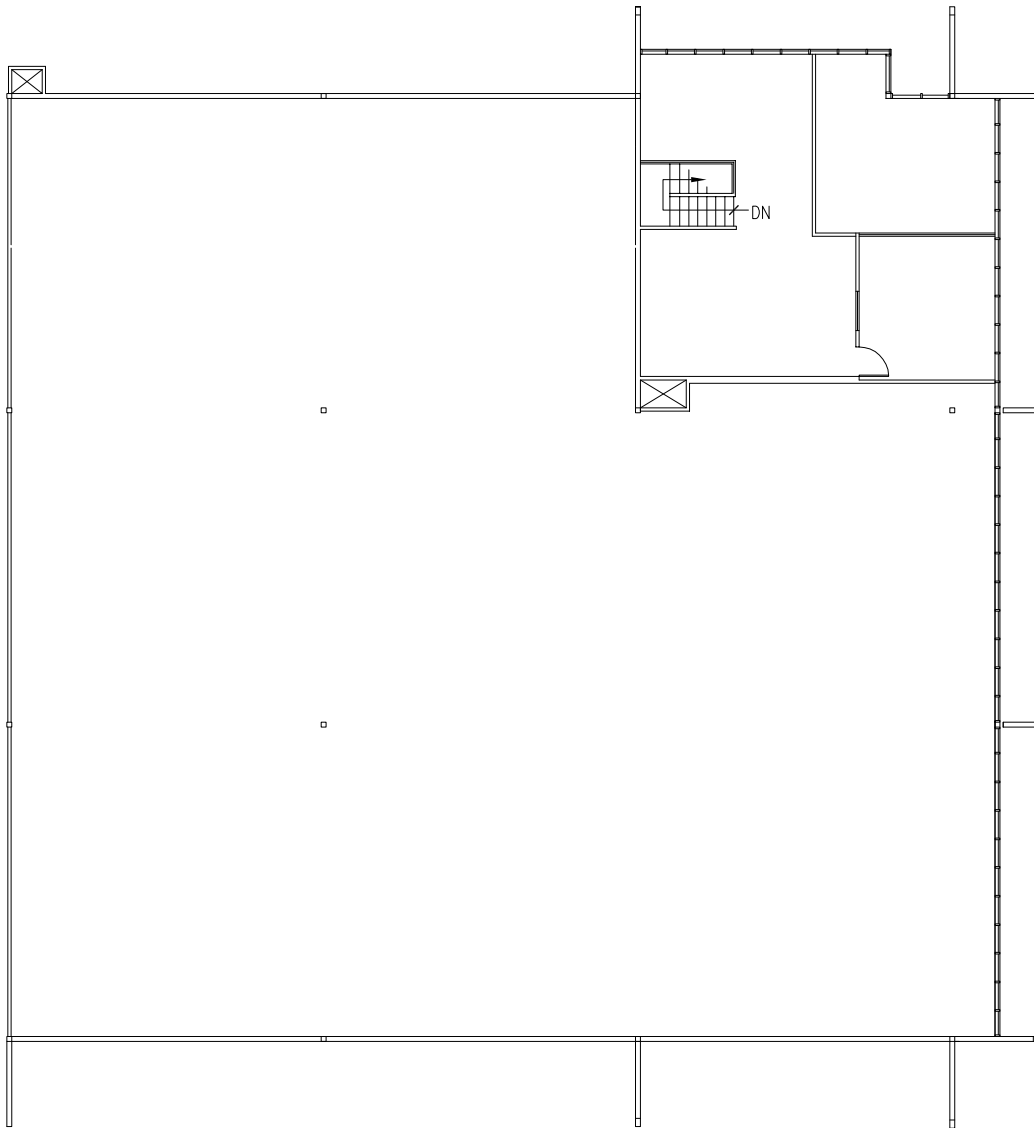
All information references in this document are approximate. The information contained herein is contained from sources deemed reliable. It is provided without representation, warranty, or guarantee, expressed or implied as to accuracy. Prospective buyer or tenant should conduct its own independent investigation relating to the property, government codes and regulations, allowed uses, and all other matters, regardless of whether they are referred to or contained in this document.

# PACIFIC BUSINESS PARK

201 FRONTAGE RD N | PACIFIC, WA 98047



## SECOND FLOOR – OFFICE



**GRIFFIN DAY**  
206.787.1474  
gday@neilwalter.com

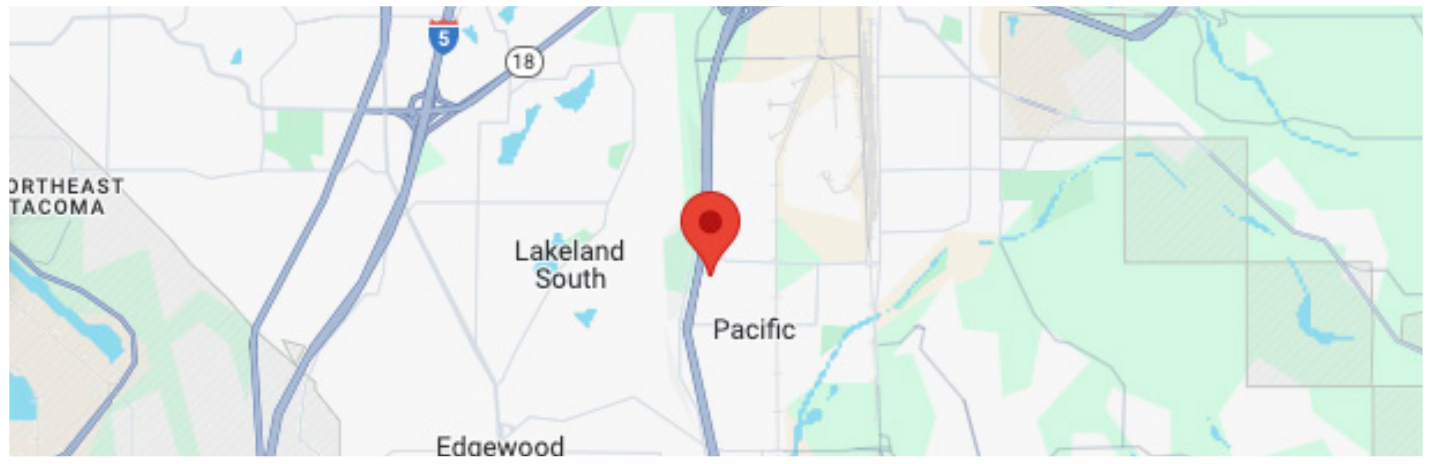
**JIM HONAN**  
206.787.1464  
jhonan@neilwalter.com

550 S Michigan St  
Seattle, WA 98108  
206.787.1800  
www.neilwalter.com

All information references in this document are approximate. The information contained herein is contained from sources deemed reliable. It is provided without representation, warranty, or guarantee, expressed or implied as to accuracy. Prospective buyer or tenant should conduct its own independent investigation relating to the property, government codes and regulations, allowed uses, and all other matters, regardless of whether they are referred to or contained in this document.

# PACIFIC BUSINESS PARK

201 FRONTAGE RD N | PACIFIC, WA 98047



**GRIFFIN DAY**  
206.787.1474  
gday@neilwalter.com

**JIM HONAN**  
206.787.1464  
jhonan@neilwalter.com

550 S Michigan St  
Seattle, WA 98108  
206.787.1800  
www.neilwalter.com

All information references in this document are approximate. The information contained herein is contained from sources deemed reliable. It is provided without representation, warranty, or guarantee, expressed or implied as to accuracy. Prospective buyer or tenant should conduct its own independent investigation relating to the property, government codes and regulations, allowed uses, and all other matters, regardless of whether they are referred to or contained in this document.