

310 44TH STREET NW

AUBURN, WA 98001

FOR SUBLEASE: 26,815 SF TOTAL (1.8 AC SITE)

HIGH BAY MANUFACTURING BUILDING & YARD



PROPERTY INFORMATION

26,815 total SF

- 21,460 SF high bay manufacturing
 - 376' x 57' / 38' clear height
 - (4) 10-ton bridge cranes
 - Heavy 220/480 volt power
 - Airlines throughout
 - 4 oversized grade level doors
 - Drive-thru capacity/clear span
 - Dry sprinkler system
- 2,240 SF shop
- 2,240 SF office
- 875 SF concrete storage building
- Lease expiration - 6/30/2027
 - Longer term available
- Approximately 1.8 acre site
 - Paved & fenced



ED HOGAN
206.787.1477

ehogan@neilwalter.com

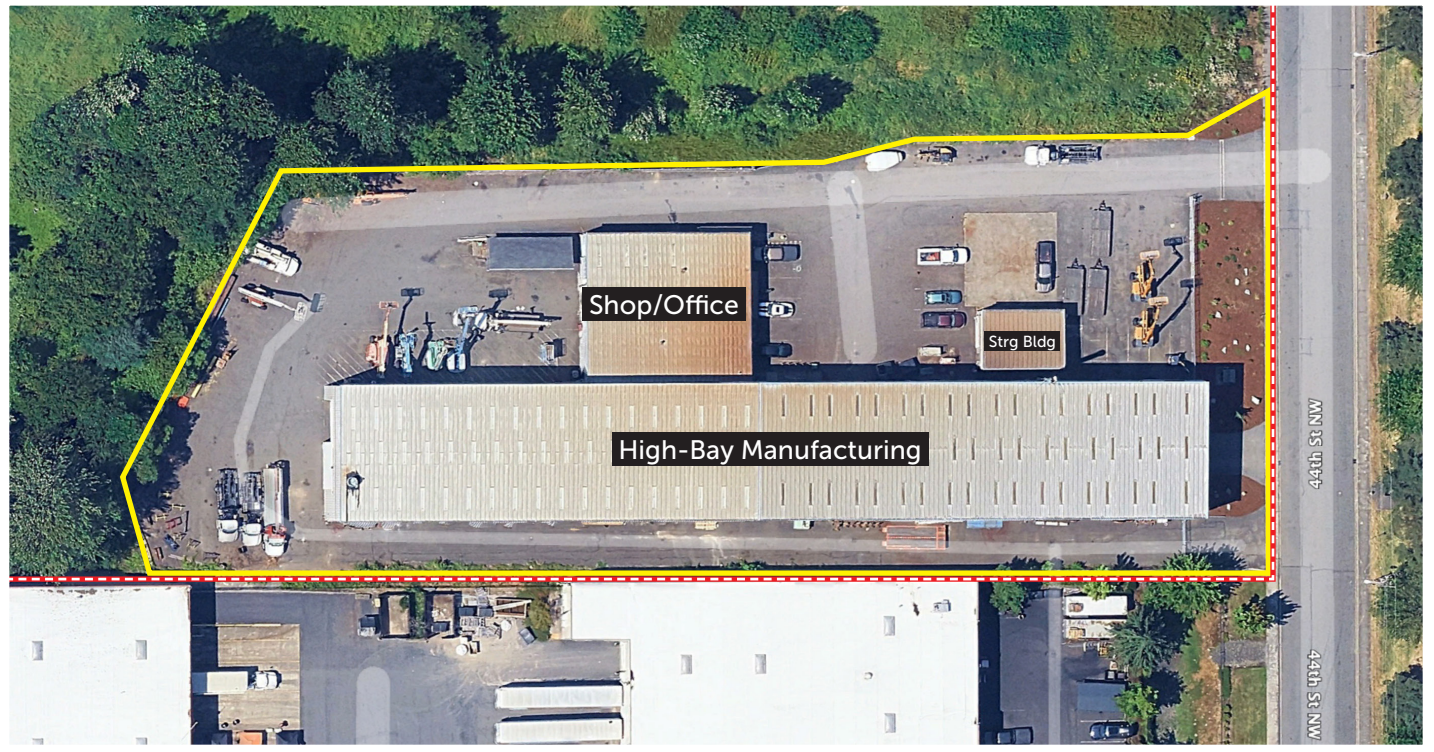
KERMIT JORGENSEN
206.787.1475

kjorgensen@neilwalter.com

All information references in this document are approximate. The information contained herein is contained from sources deemed reliable. It is provided without representation, warranty, or guarantee, expressed or implied as to accuracy. Prospective buyer or tenant should conduct its own independent investigation relating to the property, government codes and regulations, allowed uses, and all other matters, regardless of whether they are referred to or contained in this document.

310 44TH STREET NW

AUBURN, WA 98001



ED HOGAN
206.787.1477
ehogan@neilwalter.com

KERMIT JORGENSEN
206.787.1475
kjorgensen@neilwalter.com

All information references in this document are approximate. The information contained herein is contained from sources deemed reliable. It is provided without representation, warranty, or guarantee, expressed or implied as to accuracy. Prospective buyer or tenant should conduct its own independent investigation relating to the property, government codes and regulations, allowed uses, and all other matters, regardless of whether they are referred to or contained in this document.