

# PACIFIC INDUSTRIAL PARK



**CLASS A INDUSTRIAL/  
FLEX SPACE**

**14900 40TH AVE NE, BUILDING C - SUITE 102/202 | MARYSVILLE | WASHINGTON | 98271**

## FOR MORE INFORMATION:

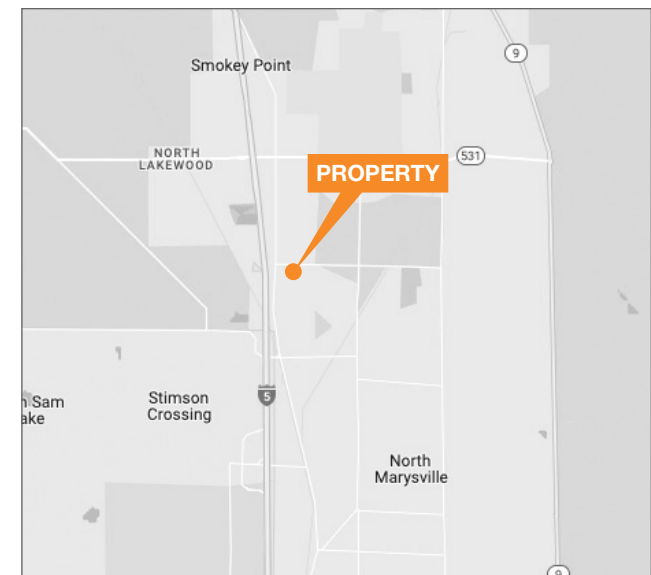
**FLETCHER FARRAR**  
206.787.1469  
ffarrar@neilwalter.com

**JOE SCALZO**  
206.787.1478  
jscalzo@neilwalter.com

**NEIL WALTER COMPANY**  
550 S Michigan St  
Seattle, WA 98108  
www.neilwalter.com.com

## PROPERTY FEATURES

- Suite 102/202
- 13,746 SF total available
- 3,746 SF 1st floor office
- 2,745 SF mezzanine (storage or office)
- 7,088 SF warehouse
- 3 grade loading doors
- Sprinklered
- Institutionally owned and managed
- Central location with easy access to highway system
- Available May 1, 2025

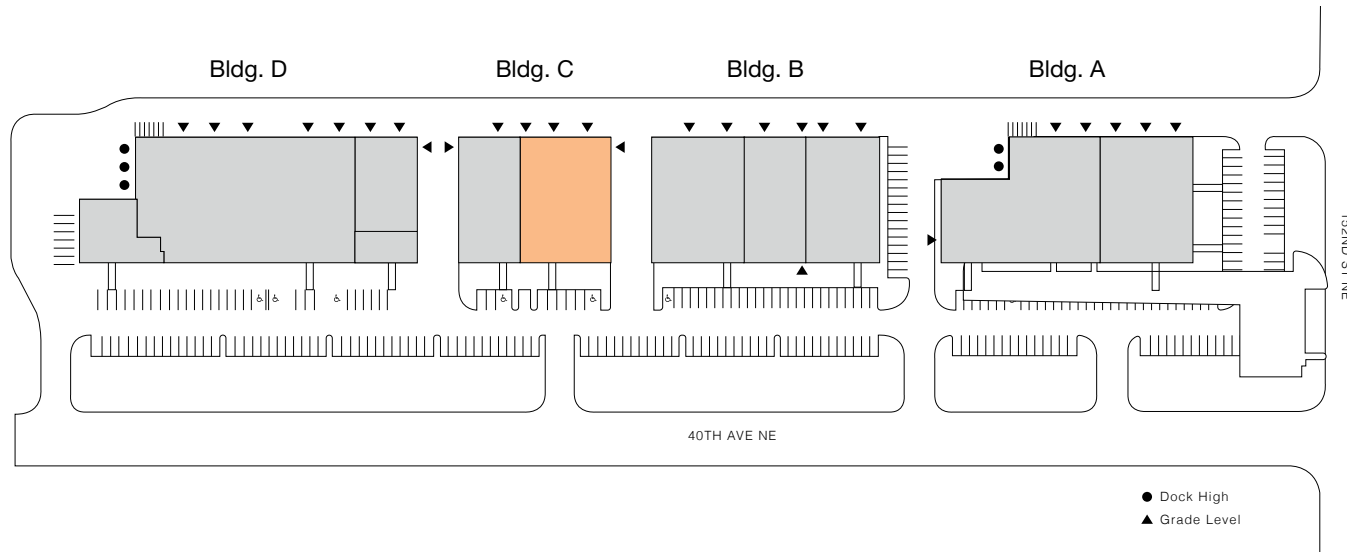


*The information contained herein is believed to be accurate but is not warranted as to its accuracy and may change or be updated without notice. Seller or landlord makes no representation as to the environmental condition of the property and recommends purchaser's or tenant's independent investigation.*



# PACIFIC INDUSTRIAL PARK

## SITE PLAN



**FOR MORE INFORMATION**

**FLETCHER FARRAR**  
206.787.1469  
ffarrar@neilwalter.com

**JOE SCALZO**  
206.787.1478  
jscalzo@neilwalter.com

**NEIL WALTER COMPANY**  
550 S Michigan St  
Seattle, WA 98108  
www.Neilwalter.com.com

**PACIFIC INDUSTRIAL PARK**  
14800 40TH AVE NE, SUITE 105  
MARYSVILLE, WA 98271



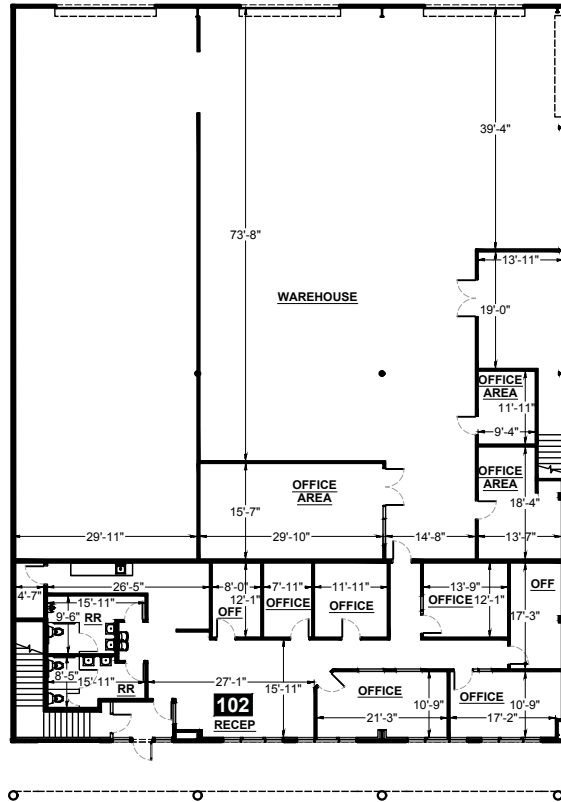
### AVAILABILITIES

AVAILABLE
  OCCUPIED

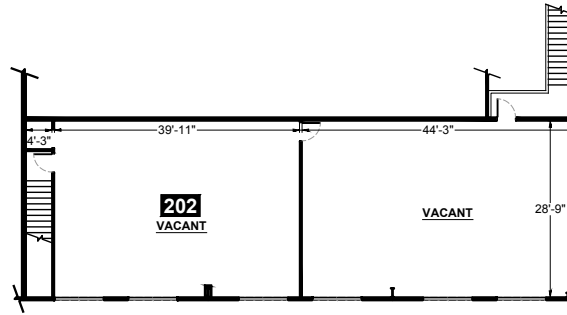
BUILDING	SUITE	OFFICE SIZE	WAREHOUSE SIZE	FLOOR PLAN
C	102/202	3,746 SF 1st floor office 2,745 SF mezz (storage or office)	7,088 SF	<a href="#">VIEW</a>

# PACIFIC INDUSTRIAL PARK

## FLOOR PLAN



**GROUND FLOOR**



**MEZZANINE**



### FOR MORE INFORMATION

**FLETCHER FARRAR**  
206.787.1469  
ffarrar@neilwalter.com

**JOE SCALZO**  
206.787.1478  
jscalzo@neilwalter.com

**NEIL WALTER COMPANY**  
550 S Michigan St  
Seattle, WA 98108  
www.Neilwalter.com.com

### BUILDING C - SUITE 102/202

BUILDING	SUITE	OFFICE SIZE	WAREHOUSE SIZE	FLOOR PLAN
C	102/202	3,746 SF 1st floor office 2,745 SF mezz (storage or office)	7,088 SF	<a href="#">VIEW</a>

**PACIFIC INDUSTRIAL PARK**  
14800 40TH AVE NE, SUITE 105  
MARYSVILLE, WA 98271

