

# VALLEY FREEWAY CORPORATE PARK

FOR LEASE - 36,844 SF

BUILDING C | 20462 84TH AVE S | KENT, WA 98032

## INDUSTRIAL SPACE AVAILABLE



### LISTING INFORMATION

**Available Size:** 36,844 SF Total  
**Office Size:** 2,432 SF  
**Yard:** Approx. 10,000 SF  
**Lease Rate:** Call Broker  
**Loading:** 10 DH Doors  
2 GL Doors (1 oversized)  
**Clear Height:** 24'  
**Available Date:** 60 Days Notice

### PROPERTY FEATURES

  
**Oversized  
Drive-In Door**

  
**Dock and  
Grade-Level Loading**

  
**High Identity Building  
Signage Available**

  
**Abundant Parking**

  
**Nearby Amenities**

  
**Excellent Access to Hwy-  
167 & Major Arterials**



**KERMIT JORGENSEN**  
206.787.1475  
kjorgensen@neilwalter.com

**FLETCHER FARRAR**  
206.787.1469  
ffarrar@neilwalter.com

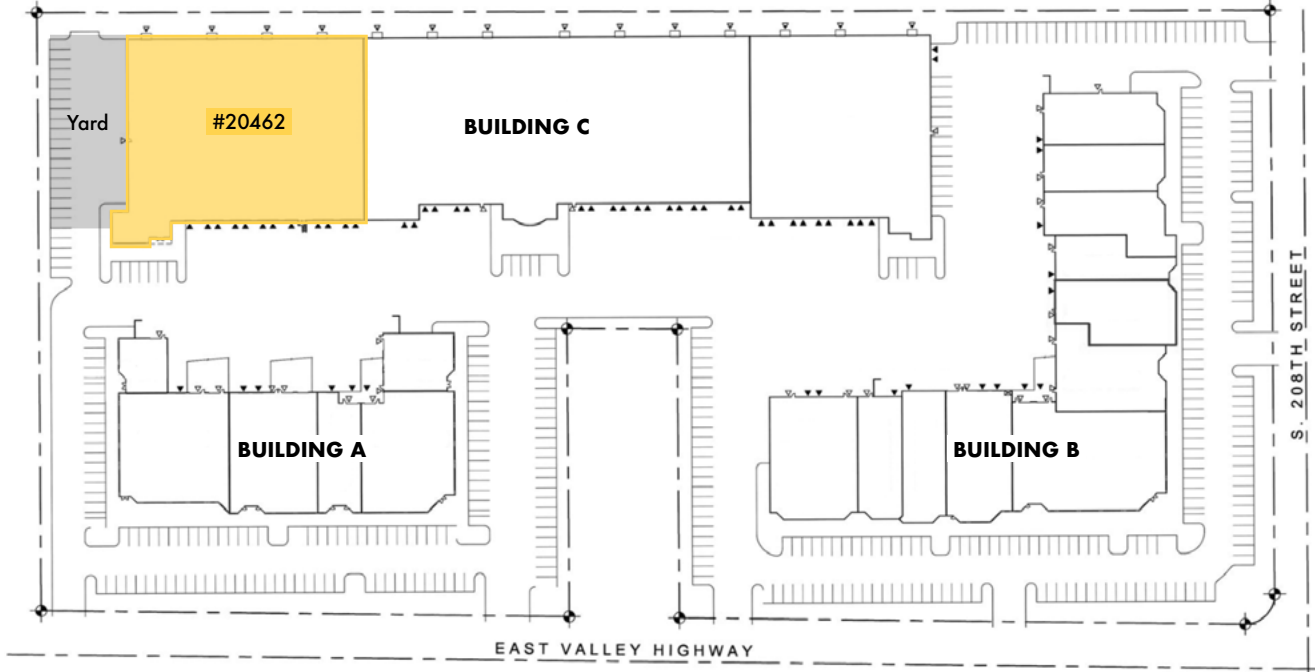
**JOHN BLEDSOE**  
206.787.1460  
jbledsoe@neilwalter.com

All information references in this document are approximate. The information contained herein is contained from sources deemed reliable. It is provided without representation, warranty, or guarantee, expressed or implied as to accuracy. Prospective buyer or tenant should conduct its own independent investigation relating to the property, government codes and regulations, allowed uses, and all other matters, regardless of whether they are referred to or contained in this document.

# VALLEY FREEWAY CORPORATE PARK



BUILDING C | 20462 84TH AVE S | KENT, WA 98032



APPROXIMATE TRAVEL TIMES	
To Highway 167	5 Minutes via S 212th St
To Interstate 5	10 Minutes via S 196th St
To Interstate 405	10 Minutes via Hwy-167



**KERMIT JORGENSEN**  
206.787.1475  
kjorgensen@neilwalter.com

**FLETCHER FARRAR**  
206.787.1469  
ffarrar@neilwalter.com

**JOHN BLEDSOE**  
206.787.1460  
jbledsoe@neilwalter.com

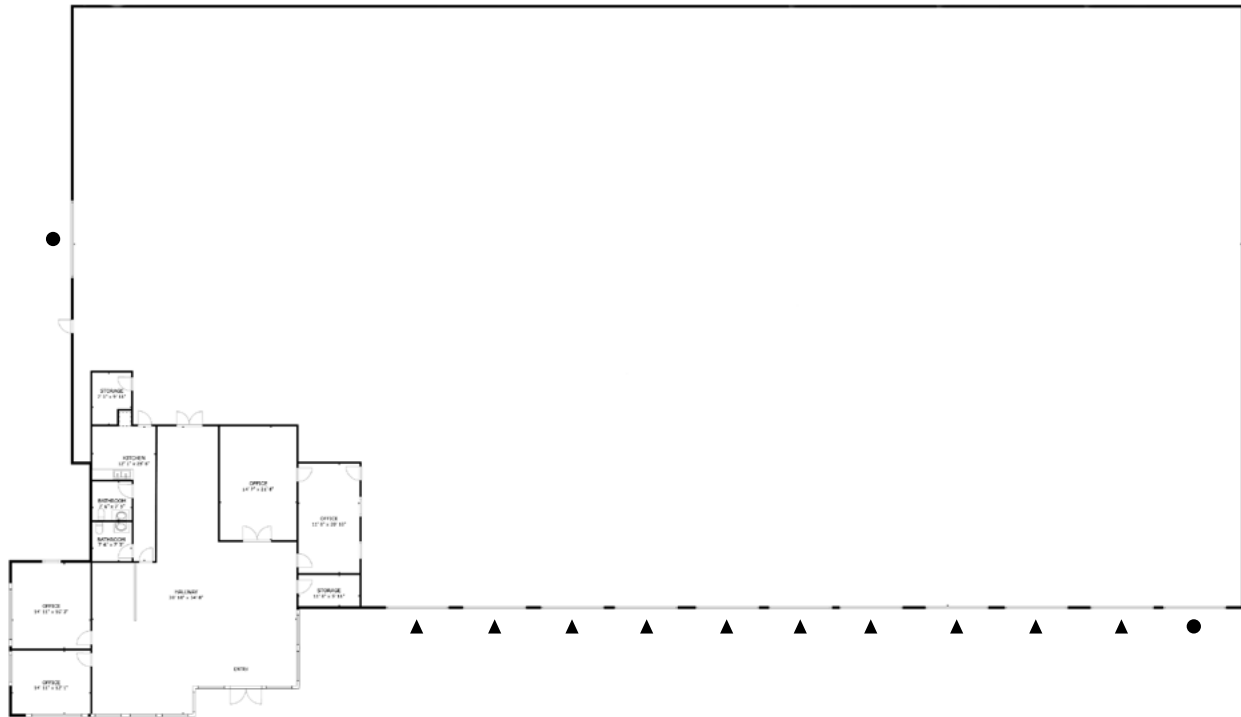
550 S Michigan St  
Seattle, WA 98108  
206.787.1800  
www.neilwalter.com

# VALLEY FREEWAY CORPORATE PARK

BUILDING C | 20462 84TH AVE S | KENT, WA 98032



Available Size	Office Size	Yard	Loading	Clear Height
36,844 SF Total	2,432 SF	~10,000 SF	10 DH & 2 GL (1 oversized)	24'



**LEGEND**

- ▶ Dock High Door
- Grade Level Door

**KERMIT JORGENSEN**  
206.787.1475  
kjorgensen@neilwalter.com

**FLETCHER FARRAR**  
206.787.1469  
ffarrar@neilwalter.com

**JOHN BLEDSOE**  
206.787.1460  
jbledsoe@neilwalter.com

550 S Michigan St  
Seattle, WA 98108  
206.787.1800  
www.neilwalter.com