

# NORTHWARD BUSINESS PARK

FOR LEASE 15,805 SF

BUILDING C | 6925 S 194TH ST | KENT, WA

CLASS A DISTRIBUTION SPACE | NORTH VALLEY LOCATION

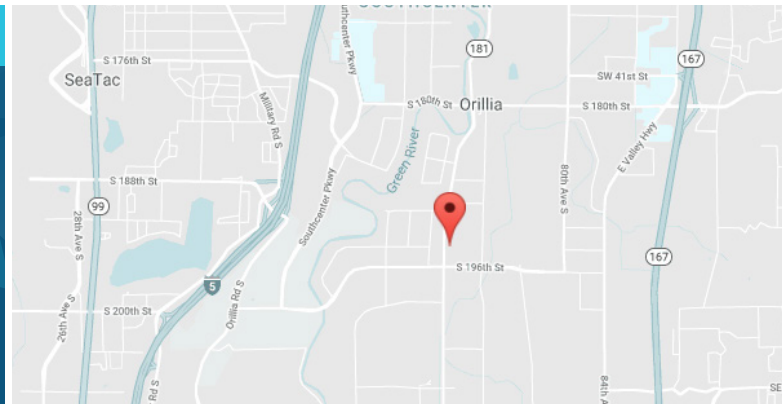


## LEASE INFORMATION

Total SF	Office SF	Warehouse SF	Loading	Clear Height	Lease Rate	Available
15,805 SF	1,800 SF	13,005 SF	3 DH & 1 GL	20'	Call Broker	4/1/25

## PROPERTY HIGHLIGHTS

- Potentially available to combine with adjacent suites to reach 25,999 SF or 41,804 SF
- End cap space
- Easy access to West Valley Highway
- Dock leveler on one dock high door



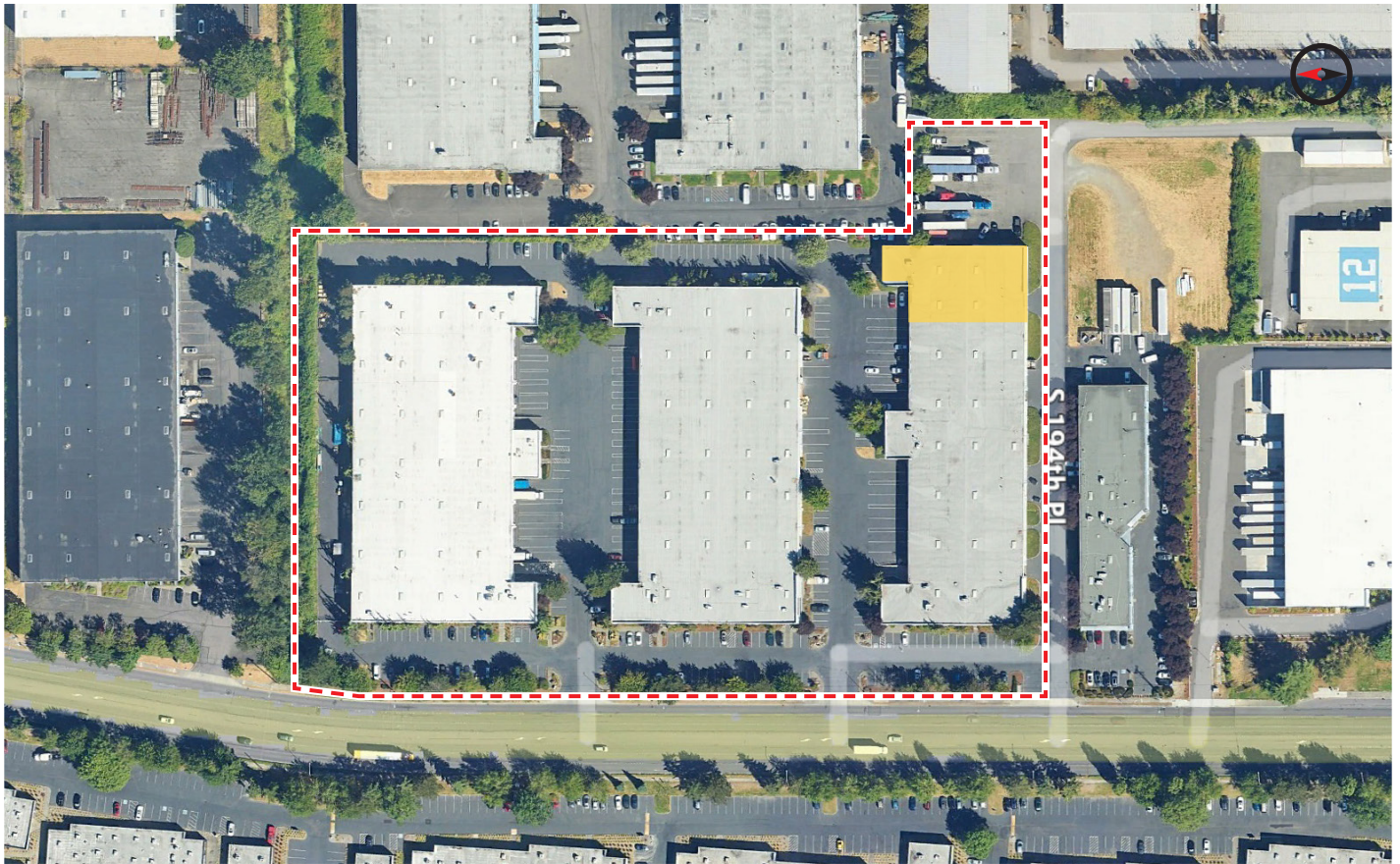
**KERMIT JORGENSEN**  
206.787.1475  
kjorgensen@neilwalter.com

**JOHN BLEDSOE**  
206.787.1460  
jbledsoe@neilwalter.com

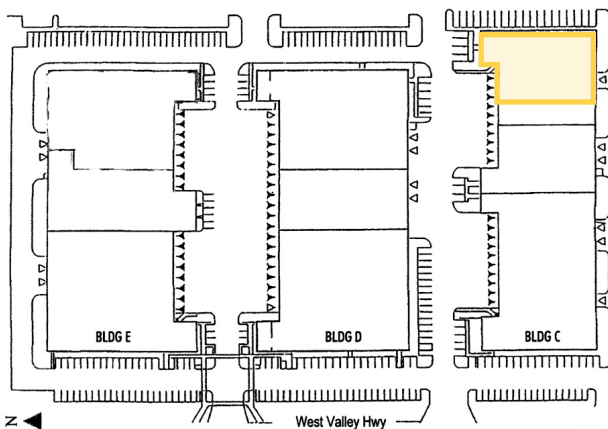
All information references in this document are approximate. The information contained herein is contained from sources deemed reliable. It is provided without representation, warranty, or guarantee, expressed or implied as to accuracy. Prospective buyer or tenant should conduct its own independent investigation relating to the property, government codes and regulations, allowed uses, and all other matters, regardless of whether they are referred to or contained in this document.

# NORTHWARD BUSINESS PARK

BUILDING C | 6925 S 194TH ST | KENT, WA



△ Grade-level Doors ▲ Dock-high Doors



**KERMIT JORGENSEN**  
206.787.1475  
kjorgensen@neilwalter.com

**JOHN BLEDSOE**  
206.787.1460  
jbledsoe@neilwalter.com

550 S Michigan St  
Seattle, WA 98108  
206.787.1800  
www.neilwalter.com

All information references in this document are approximate. The information contained herein is contained from sources deemed reliable. It is provided without representation, warranty, or guarantee, expressed or implied as to accuracy. Prospective buyer or tenant should conduct its own independent investigation relating to the property, government codes and regulations, allowed uses, and all other matters, regardless of whether they are referred to or contained in this document.