

NORTHWARD BUSINESS PARK

FOR LEASE 11,284 SF

BUILDING C | 6901 S 194TH ST | KENT, WA

CLASS A DISTRIBUTION SPACE | NORTH VALLEY LOCATION

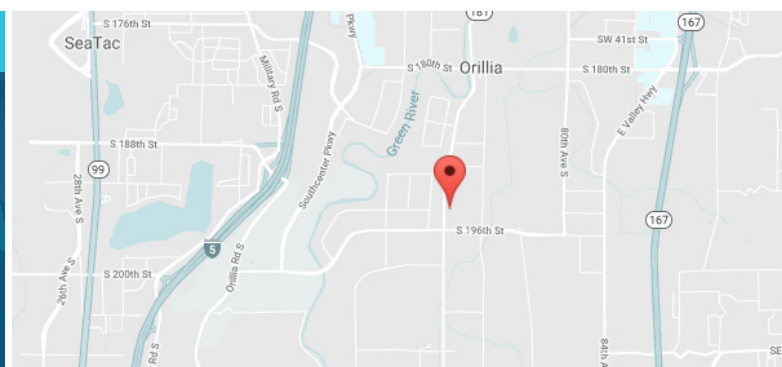


LEASE INFORMATION

Total SF	Office SF	Warehouse SF	Loading	Clear Height	Lease Rate	Available
11,284 SF	1,046 SF	10,238 SF	3 DH & 2 GL	20'	Call Broker	Now

PROPERTY HIGHLIGHTS

- Potentially available to combine with adjacent suites to reach 25,999 SF or 41,804 SF
- Easy access to West Valley Highway
- Two oversized grade level doors (12' x 16')



KERMIT JORGENSEN
206.787.1475
kjorgensen@neilwalter.com

JOHN BLEDSOE
206.787.1460
jbledsoe@neilwalter.com

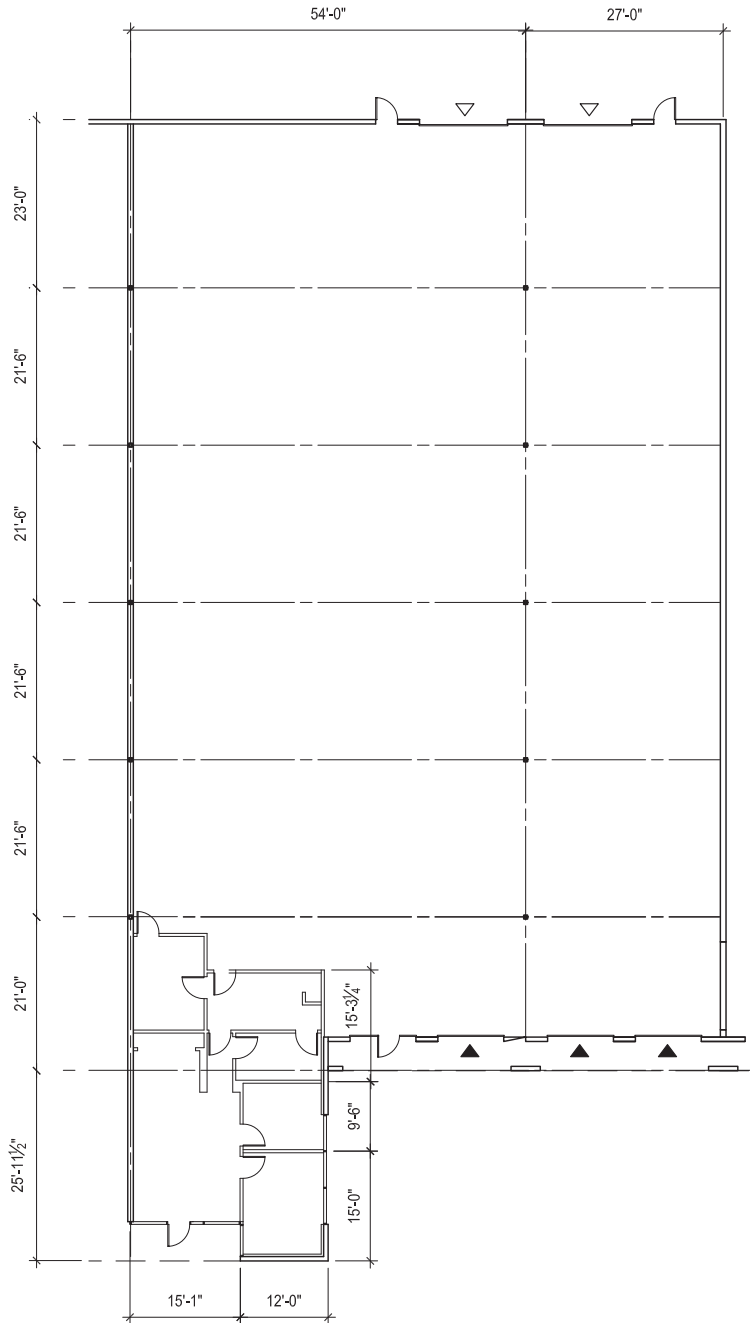
All information references in this document are approximate. The information contained herein is contained from sources deemed reliable. It is provided without representation, warranty, or guarantee, expressed or implied as to accuracy. Prospective buyer or tenant should conduct its own independent investigation relating to the property, government codes and regulations, allowed uses, and all other matters, regardless of whether they are referred to or contained in this document.

NORTHWARD BUSINESS PARK

BUILDING C | 6901 S 194TH ST | KENT, WA



Total SF	Office SF	Warehouse SF	Loading	Clear Height
11,284 SF	1,046 SF	10,238 SF	3 DH & 2 GL	20'



KERMIT JORGENSEN
206.787.1475
kjorgensen@neilwalter.com

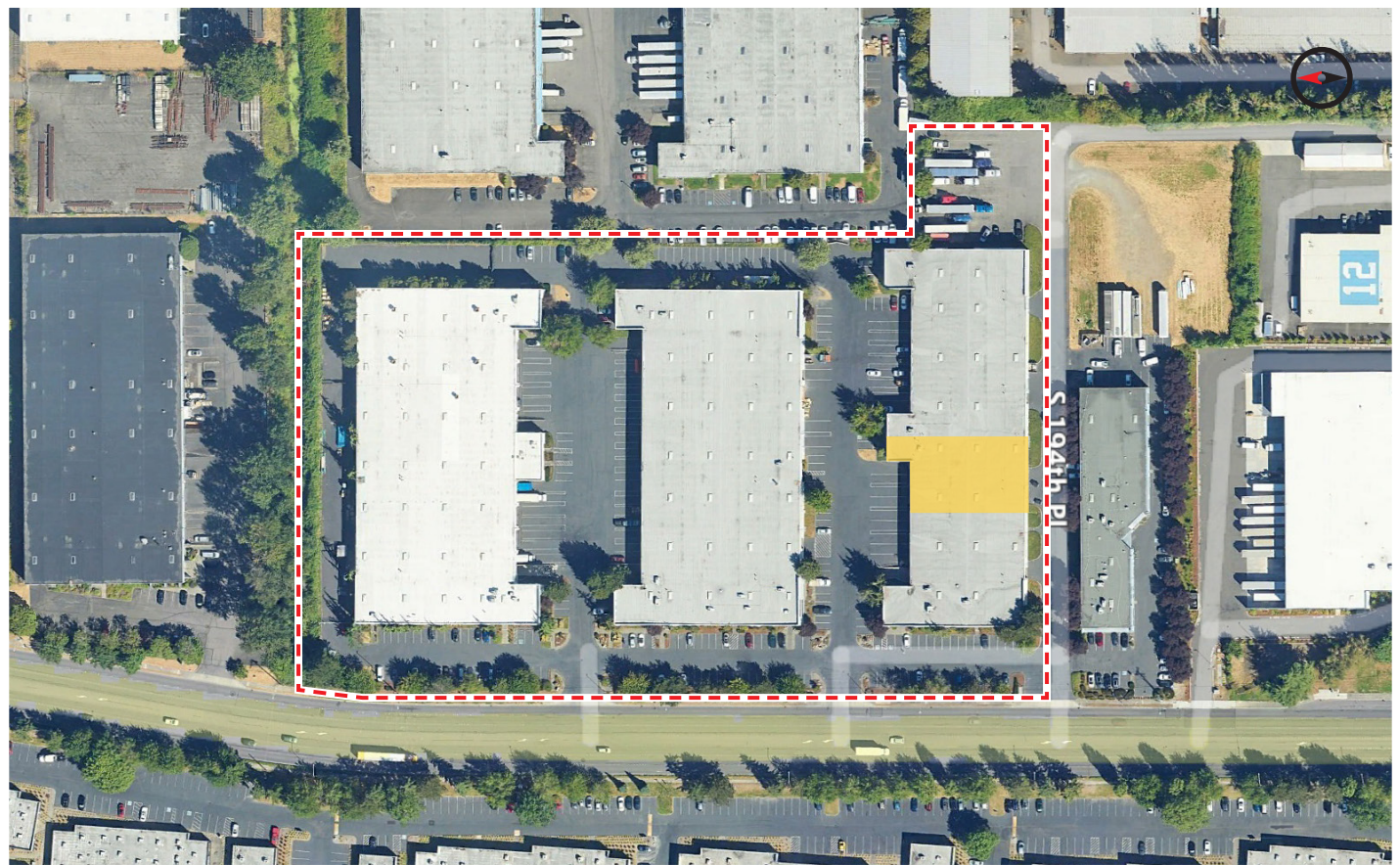
JOHN BLEDSOE
206.787.1460
jbledsoe@neilwalter.com

550 S Michigan St
Seattle, WA 98108
206.787.1800
www.neilwalter.com

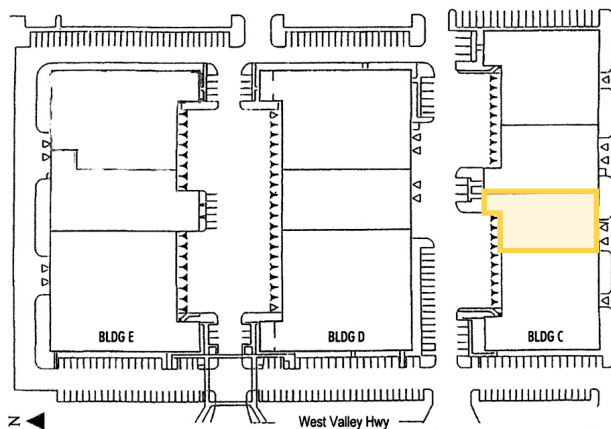
All information references in this document are approximate. The information contained herein is contained from sources deemed reliable. It is provided without representation, warranty, or guarantee, expressed or implied as to accuracy. Prospective buyer or tenant should conduct its own independent investigation relating to the property, government codes and regulations, allowed uses, and all other matters, regardless of whether they are referred to or contained in this document.

NORTHWARD BUSINESS PARK

BUILDING C | 6901 S 194TH ST | KENT, WA



△ Grade-level Doors ▲ Dock-high Doors



KERMIT JORGENSEN
206.787.1475
kjorgensen@neilwalter.com

JOHN BLEDSOE
206.787.1460
jbledsoe@neilwalter.com

550 S Michigan St
Seattle, WA 98108
206.787.1800
www.neilwalter.com

All information references in this document are approximate. The information contained herein is contained from sources deemed reliable. It is provided without representation, warranty, or guarantee, expressed or implied as to accuracy. Prospective buyer or tenant should conduct its own independent investigation relating to the property, government codes and regulations, allowed uses, and all other matters, regardless of whether they are referred to or contained in this document.