

PACIFIC BUSINESS PARK - BLDG A

FOR LEASE - 6,008 SF

8611 S 212TH ST | KENT, WA

FORMER BREWERY SPACE IN THE HEART OF THE KENT VALLEY



LEASE INFORMATION

Unit 8611:	6,008 SF (900 SF Office)
Loading:	2 GL
Lease Rate:	Call Broker
Available:	Now

PROPERTY FEATURES

Currently operating as a brewery. Potential for some infrastructure to remain

Fantastic exposure to 212th St

Immediate access to Hwy 167

Numerous amenities nearby



KERMIT JORGENSEN
206.787.1469
kjorgensen@neilwalter.com

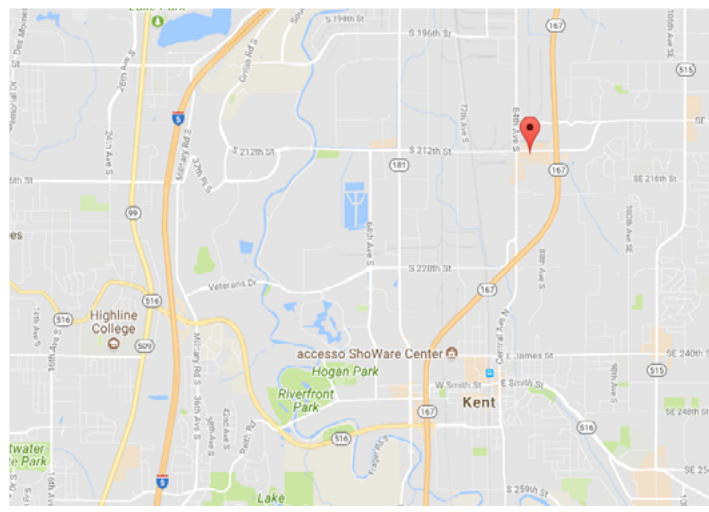
FLETCHER FARRAR
206.787.1469
ffarrar@neilwalter.com

JOHN BLEDSOE
206.787.1460
jbledsoe@neilwalter.com

All information references in this document are approximate. The information contained herein is contained from sources deemed reliable. It is provided without representation, warranty, or guarantee, expressed or implied as to accuracy. Prospective buyer or tenant should conduct its own independent investigation relating to the property, government codes and regulations, allowed uses, and all other matters, regardless of whether they are referred to or contained in this document.

PACIFIC BUSINESS PARK - BLDG A

8611 S 212TH ST | KENT, WA



KERMIT JORGENSEN
206.787.1469
kjorgensen@neilwalter.com

FLETCHER FARRAR
206.787.1469
ffarrar@neilwalter.com

JOHN BLEDSOE
206.787.1460
jbledsoe@neilwalter.com

550 S Michigan St
Seattle, WA 98108
206.787.1800
www.neilwalter.com

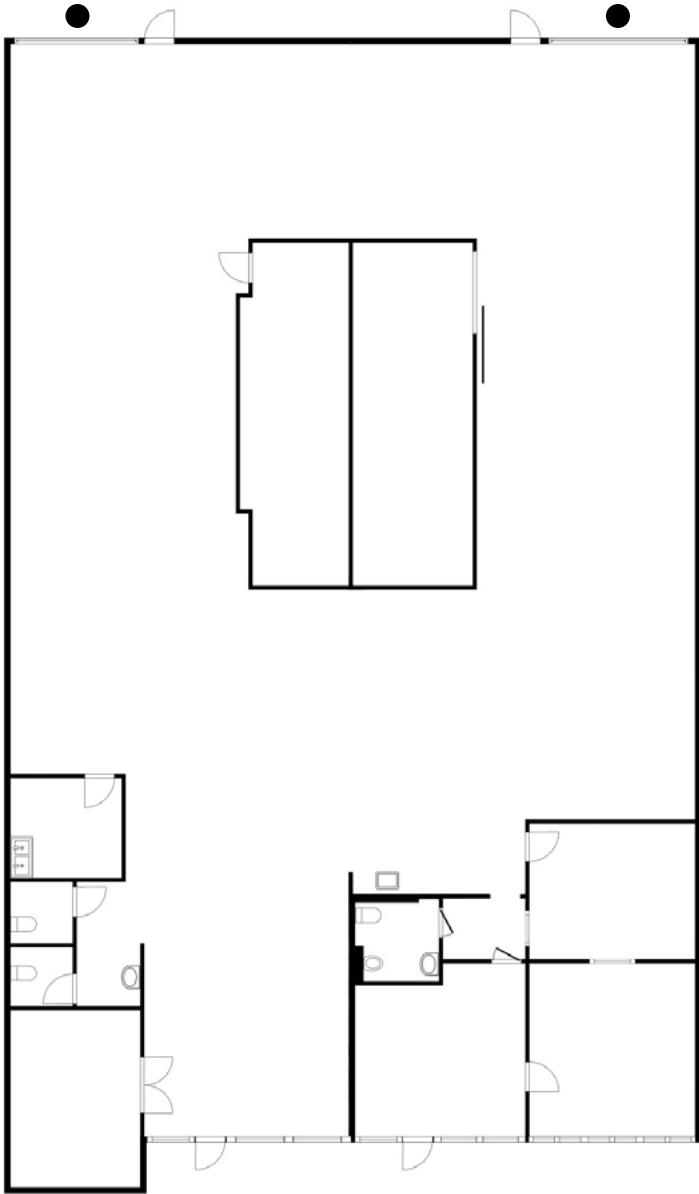
All information references in this document are approximate. The information contained herein is contained from sources deemed reliable. It is provided without representation, warranty, or guarantee, expressed or implied as to accuracy. Prospective buyer or tenant should conduct its own independent investigation relating to the property, government codes and regulations, allowed uses, and all other matters, regardless of whether they are referred to or contained in this document.

PACIFIC BUSINESS PARK - BLDG A

8611 S 212TH ST | KENT, WA



Unit 8611
6,008 SF Shell | 900 SF Office



Click or Scan



For Virtual Tour

KERMIT JORGENSEN
206.787.1469
kjorgensen@neilwalter.com

FLETCHER FARRAR
206.787.1469
ffarrar@neilwalter.com

JOHN BLEDSOE
206.787.1460
jbledsoe@neilwalter.com

550 S Michigan St
Seattle, WA 98108
206.787.1800
www.neilwalter.com