

7014 SOUTH 220TH STREET

KENT, WA 98032

FOR SUBLEASE - 3,750 SF

RARE SMALL DOCK HIGH SPACE AVAILABLE IN KENT

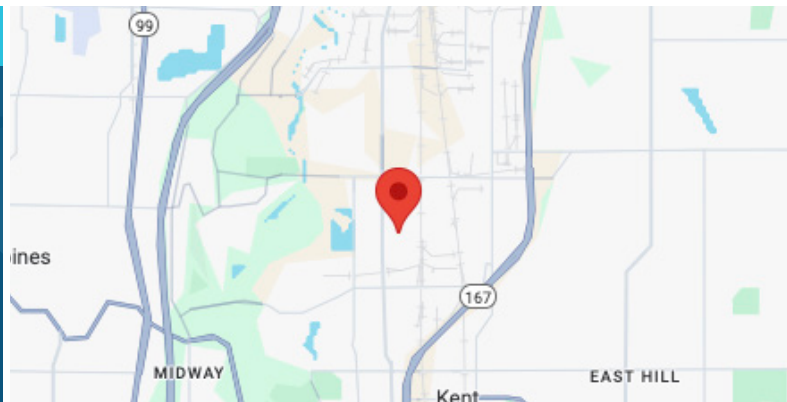


LEASE INFORMATION

Available Size	Office Size	Warehouse Size	Loading	Lease Rate	Lease Type
3,750 SF	369 SF	3,381 SF	2 GL & 3 DH Doors	\$1.22/SF Blended	NNN

LEASE INFORMATION

- Lease term through June 1, 2027
- Located in the heart of the Kent Industrial Market
- High image building and landscaping
- Immediate access to Hwy 167 and I-5



JOHN BLEDSOE

206.787.1460

jbledsoe@neilwalter.com

KERMIT JORGENSEN

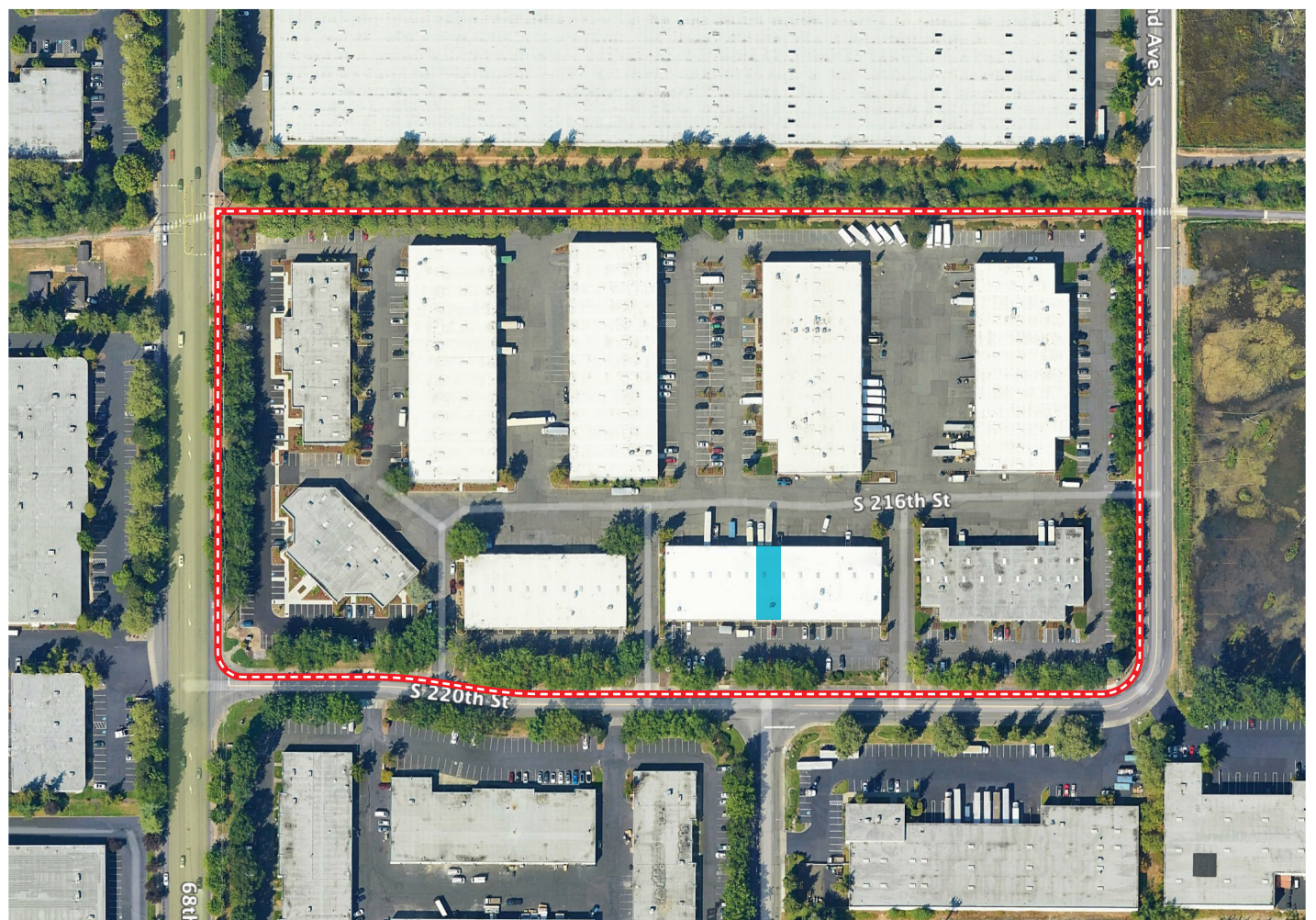
206.787.1475

kjorgensen@neilwalter.com

All information references in this document are approximate. The information contained herein is contained from sources deemed reliable. It is provided without representation, warranty, or guarantee, expressed or implied as to accuracy. Prospective buyer or tenant should conduct its own independent investigation relating to the property, government codes and regulations, allowed uses, and all other matters, regardless of whether they are referred to or contained in this document.

7014 SOUTH 220TH STREET

KENT, WA 98032



JOHN BLEDSOE
206.787.1460
jbledsoe@neilwalter.com

KERMIT JORGENSEN
206.787.1460
kjorgensen@neilwalter.com

550 S Michigan St
Seattle, WA 98108
206.787.1800
www.neilwalter.com

All information references in this document are approximate. The information contained herein is contained from sources deemed reliable. It is provided without representation, warranty, or guarantee, expressed or implied as to accuracy. Prospective buyer or tenant should conduct its own independent investigation relating to the property, government codes and regulations, allowed uses, and all other matters, regardless of whether they are referred to or contained in this document.