

24TH STREET BUSINESS PARK

FOR LEASE - 18,302 SF

13724 24TH ST E, BLDG F (SOUTH) | SUMNER, WA

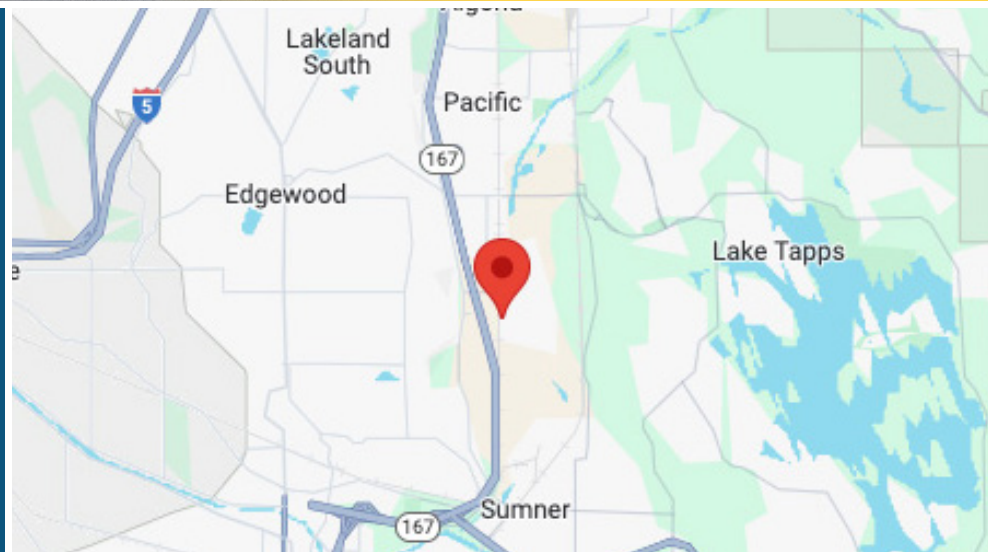
FULL BUILDING WITH FENCED YARD AVAILABLE FOR LEASE



CALL BROKERS FOR LEASE RATE

PROPERTY FEATURES:

- 18,302 SF standalone building
- 2,794 SF of office
- 17,717 SF of fenced yard/loading
- 9 grade-level doors (14'x14')
- 15'-18' clear height
- 800 amps of 480v 3-phase power
- M-1 zoning
- Fully insulated
- Potential to add truck well
- Available now



SPENCER MEAD
206.787.1476
smead@neilwalter.com

GRIFFIN DAY
206.787.1474
gday@neilwalter.com

professionally
managed/owned by:



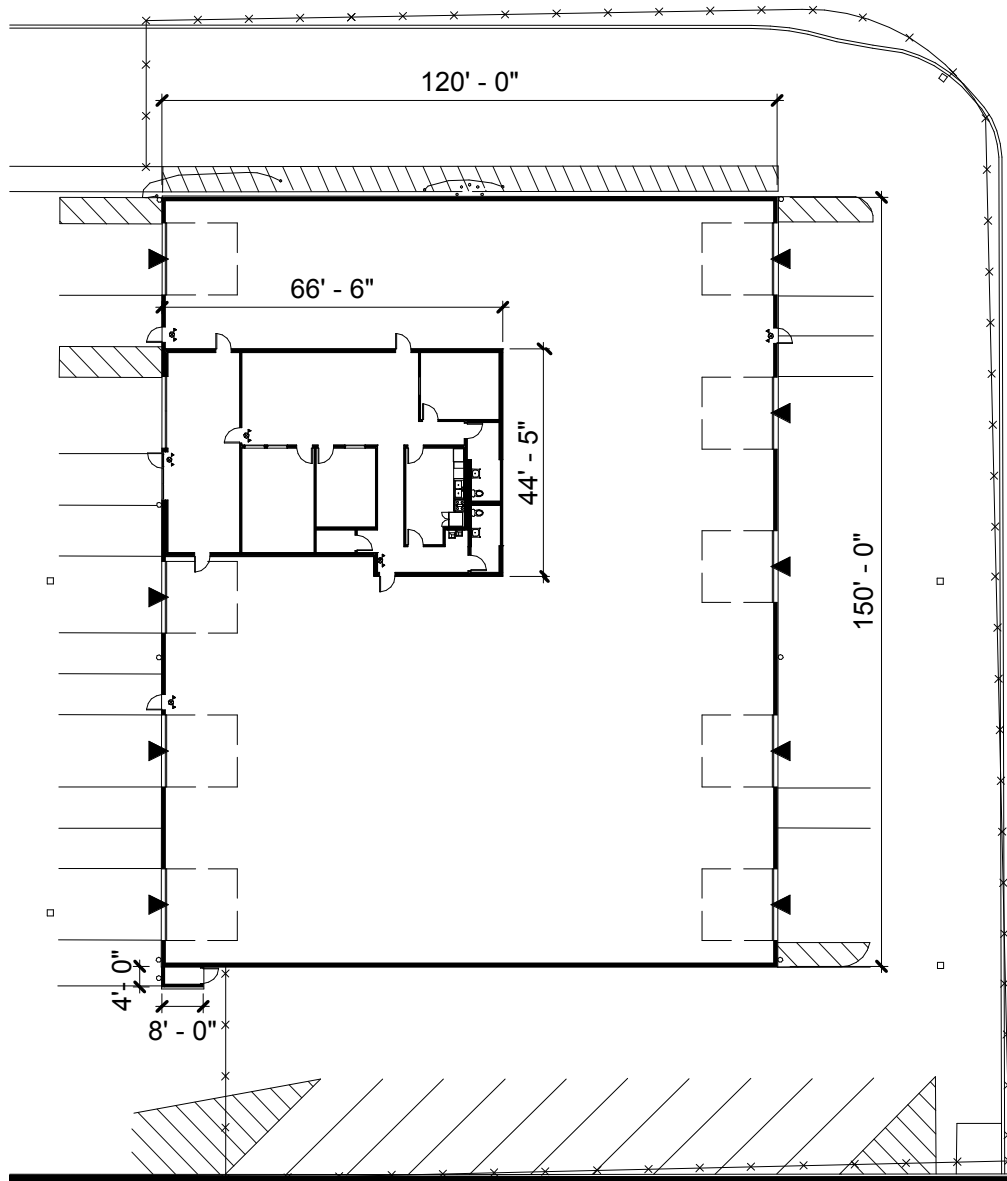
24TH STREET BUSINESS PARK

13724 24TH ST E, BLDG F (SOUTH) | SUMNER, WA



SOUTH BUILDING

Building	Total Size	Office Size	Fenced Yard	Loading	Available
F	18,302 SF	2,794 SF	17,717 SF	9 GL Doors	Now



SPENCER MEAD
206.787.1476
smead@neilwalter.com

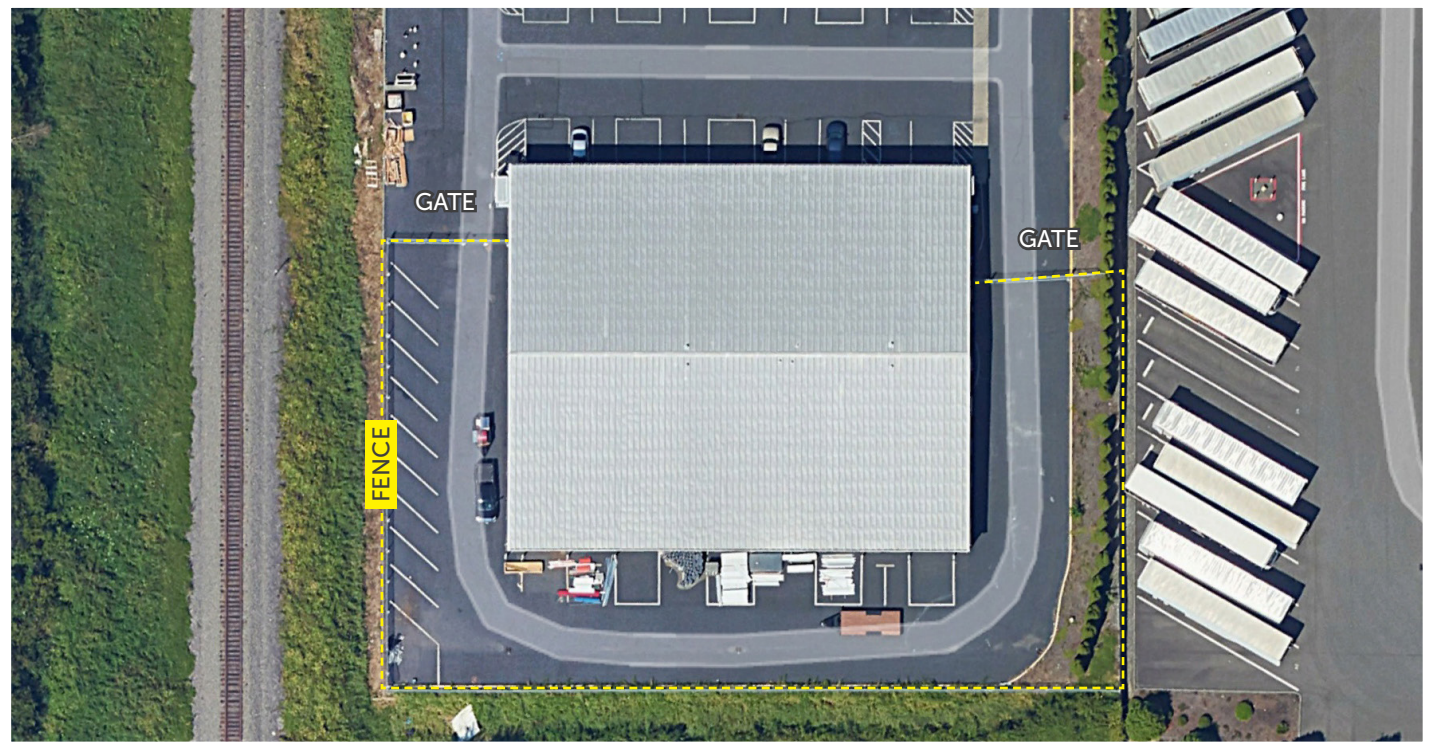
GRIFFIN DAY
206.787.1474
gday@neilwalter.com

550 S Michigan St
Seattle, WA 98108
206.787.1800
www.neilwalter.com

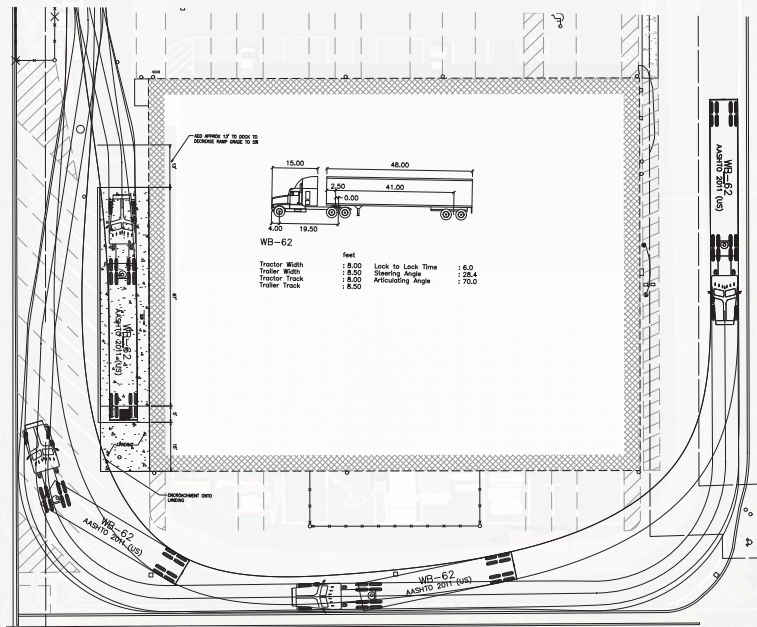
All information references in this document are approximate. The information contained herein is contained from sources deemed reliable. It is provided without representation, warranty, or guarantee, expressed or implied as to accuracy. Prospective buyer or tenant should conduct its own independent investigation relating to the property, government codes and regulations, allowed uses, and all other matters, regardless of whether they are referred to or contained in this document.

24TH STREET BUSINESS PARK

13724 24TH ST E, BLDG F (SOUTH) | SUMNER, WA



POTENTIAL TRUCK WELL SCHEME



SPENCER MEAD
206.787.1476
smead@neilwalter.com

GRIFFIN DAY
206.787.1474
gday@neilwalter.com

550 S Michigan St
Seattle, WA 98108
206.787.1800
www.neilwalter.com

All information references in this document are approximate. The information contained herein is contained from sources deemed reliable. It is provided without representation, warranty, or guarantee, expressed or implied as to accuracy. Prospective buyer or tenant should conduct its own independent investigation relating to the property, government codes and regulations, allowed uses, and all other matters, regardless of whether they are referred to or contained in this document.

24TH STREET BUSINESS PARK

13724 24TH ST E, BLDG F (SOUTH) | SUMNER, WA



SPENCER MEAD
206.787.1476
smead@neilwalter.com

GRIFFIN DAY
206.787.1474
gday@neilwalter.com

550 S Michigan St
Seattle, WA 98108
206.787.1800
www.neilwalter.com

All information references in this document are approximate. The information contained herein is contained from sources deemed reliable. It is provided without representation, warranty, or guarantee, expressed or implied as to accuracy. Prospective buyer or tenant should conduct its own independent investigation relating to the property, government codes and regulations, allowed uses, and all other matters, regardless of whether they are referred to or contained in this document.