

PACIFIC INDUSTRIAL PARK



CLASS A OFFICE SPACE

14800 40TH AVE NE, BUILDING D - SUITE 105-A | MARYSVILLE | WASHINGTON | 98271

FOR MORE INFORMATION:

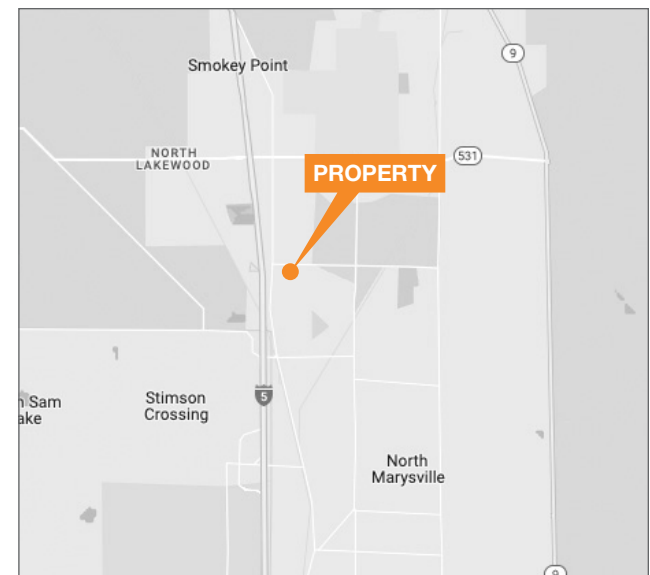
FLETCHER FARRAR
206.787.1469
ffarrar@neilwalter.com

JOE SCALZO
206.787.1478
jscalzo@neilwalter.com

NEIL WALTER COMPANY
550 S Michigan St
Seattle, WA 98108
www.neilwalter.com.com

PROPERTY FEATURES

- Suite 105-A
- 1,753 SF Available (Office)
- Call for rates
- Institutionally owned and managed
- Central location with easy access to highway system
- Available March 2025

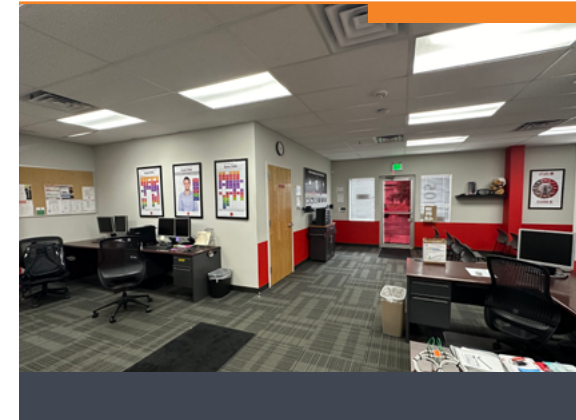
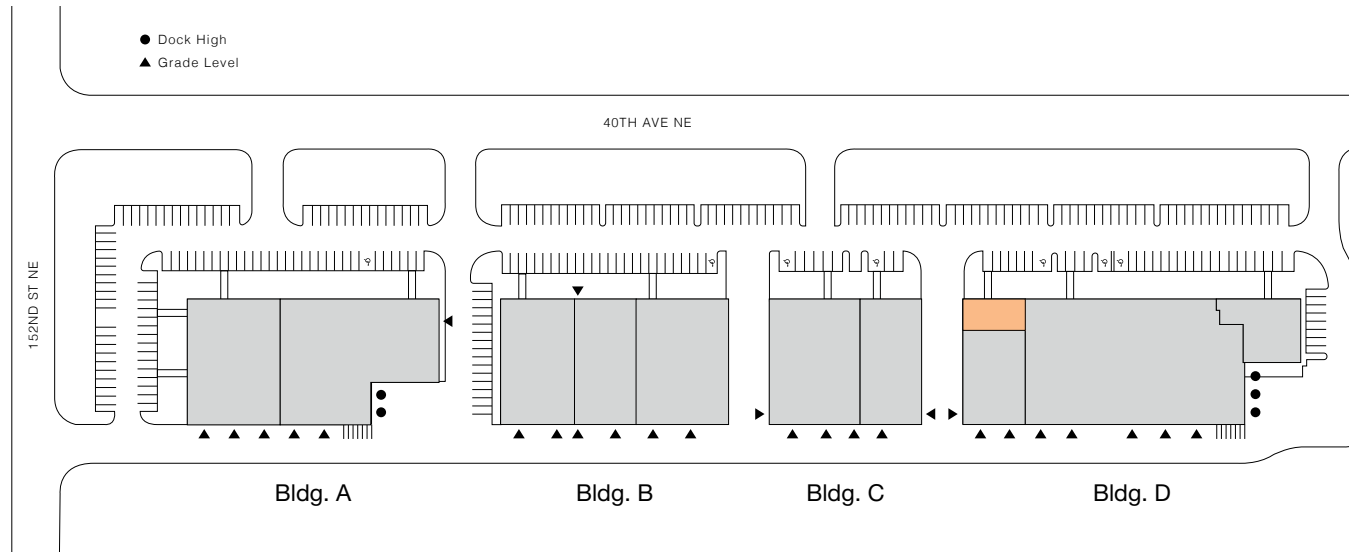


The information contained herein is believed to be accurate but is not warranted as to its accuracy and may change or be updated without notice. Seller or landlord makes no representation as to the environmental condition of the property and recommends purchaser's or tenant's independent investigation.



PACIFIC INDUSTRIAL PARK

SITE PLAN



FOR MORE INFORMATION

FLETCHER FARRAR
206.787.1469
ffarrar@neilwalter.com

JOE SCALZO
206.787.1478
jscalzo@neilwalter.com

NEIL WALTER COMPANY
550 S Michigan St
Seattle, WA 98108
www.Neilwalter.com.com

PACIFIC INDUSTRIAL PARK
14800 40TH AVE NE, SUITE 105
MARYSVILLE, WA 98271

AVAILABILITIES

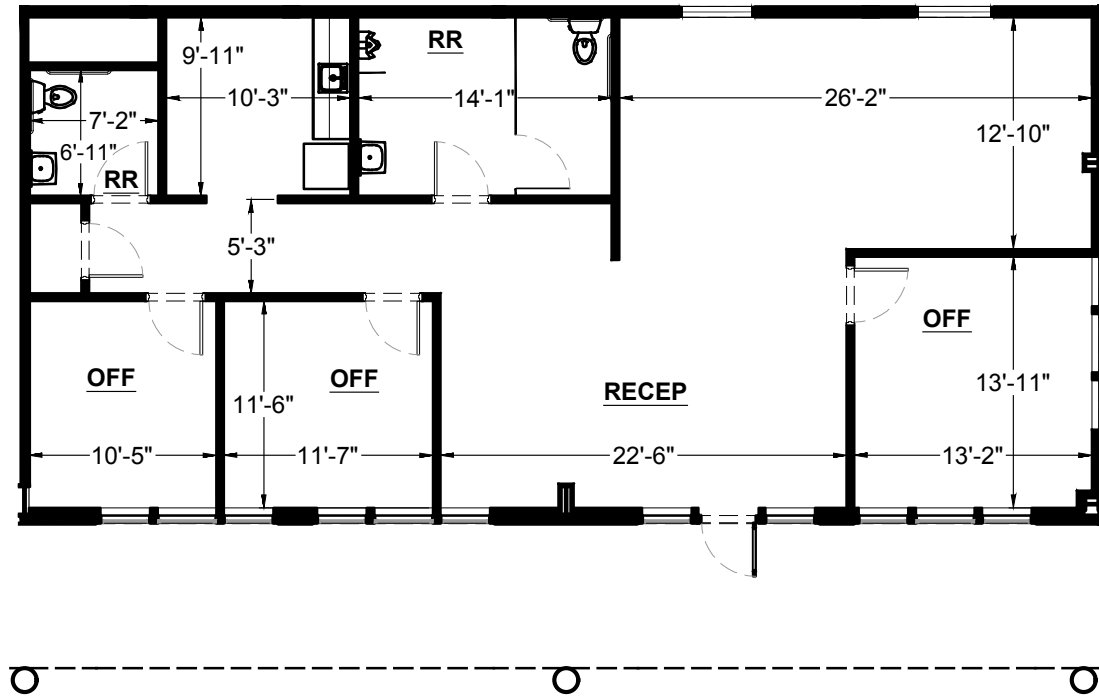
■ AVAILABLE ■ OCCUPIED

| BUILDING | SUITE | OFFICE SIZE | FLOOR PLAN |
|----------|-------|-------------|----------------------|
| D | 105-A | 1,753 SF | VIEW |



PACIFIC INDUSTRIAL PARK

FLOOR PLAN



FOR MORE INFORMATION

FLETCHER FARRAR
206.787.1469
ffarrar@neilwalter.com

JOE SCALZO
206.787.1478
jscalzo@neilwalter.com

NEIL WALTER COMPANY
550 S Michigan St
Seattle, WA 98108
www.Neilwalter.com.com

PACIFIC INDUSTRIAL PARK
14800 40TH AVE NE, SUITE 105
MARYSVILLE, WA 98271

BUILDING D - SUITE 105-A

| BUILDING | SUITE | OFFICE SIZE | FLOOR PLAN |
|----------|-------|-------------|----------------------|
| D | 105-A | 1,753 SF | VIEW |

