

# PACIFIC BUSINESS PARK - BLDG C

FOR LEASE - 6,845 SF

8637 S 212TH ST | KENT, WA

## HIGH QUALITY INDUSTRIAL SPACE IN THE HEART OF THE KENT VALLEY



### LEASE INFORMATION

<b>Unit 8637:</b>	6,845 SF Shell 1,150 SF Office
<b>Lease Rate:</b>	Call Broker
<b>Loading:</b>	3 DH positions
<b>Available:</b>	3/1/2025

### PROPERTY FEATURES

Enhanced security industrial park with gated access, fully fenced and lit property, and roaming nightly patrol

Corner unit

Immediate access to Hwy 167

High image building and landscaping



**KERMIT JORGENSEN**  
206.787.1469  
kjorgensen@neilwalter.com

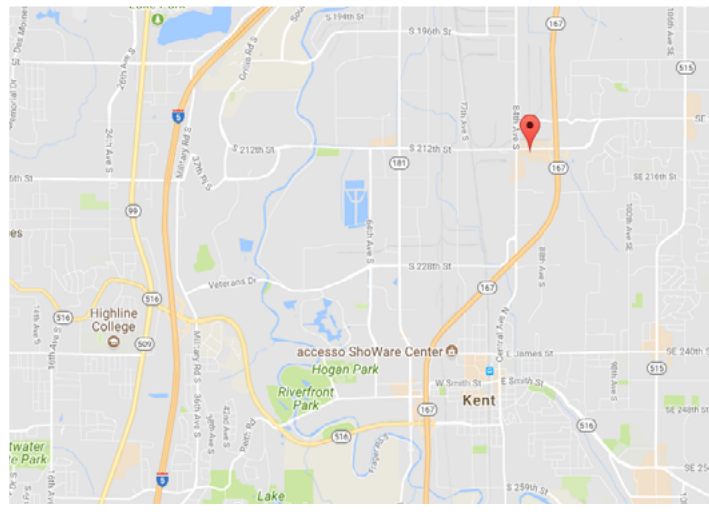
**FLETCHER FARRAR**  
206.787.1469  
ffarrar@neilwalter.com

**JOHN BLEDSOE**  
206.787.1460  
jbledsoe@neilwalter.com

All information references in this document are approximate. The information contained herein is contained from sources deemed reliable. It is provided without representation, warranty, or guarantee, expressed or implied as to accuracy. Prospective buyer or tenant should conduct its own independent investigation relating to the property, government codes and regulations, allowed uses, and all other matters, regardless of whether they are referred to or contained in this document.

# PACIFIC BUSINESS PARK - BLDG C

8637 S 212TH ST | KENT, WA



**KERMIT JORGENSEN**  
206.787.1469  
kjorgensen@neilwalter.com

**FLETCHER FARRAR**  
206.787.1469  
ffarrar@neilwalter.com

**JOHN BLEDSOE**  
206.787.1460  
jbledsoe@neilwalter.com

550 S Michigan St  
Seattle, WA 98108  
206.787.1800  
www.neilwalter.com

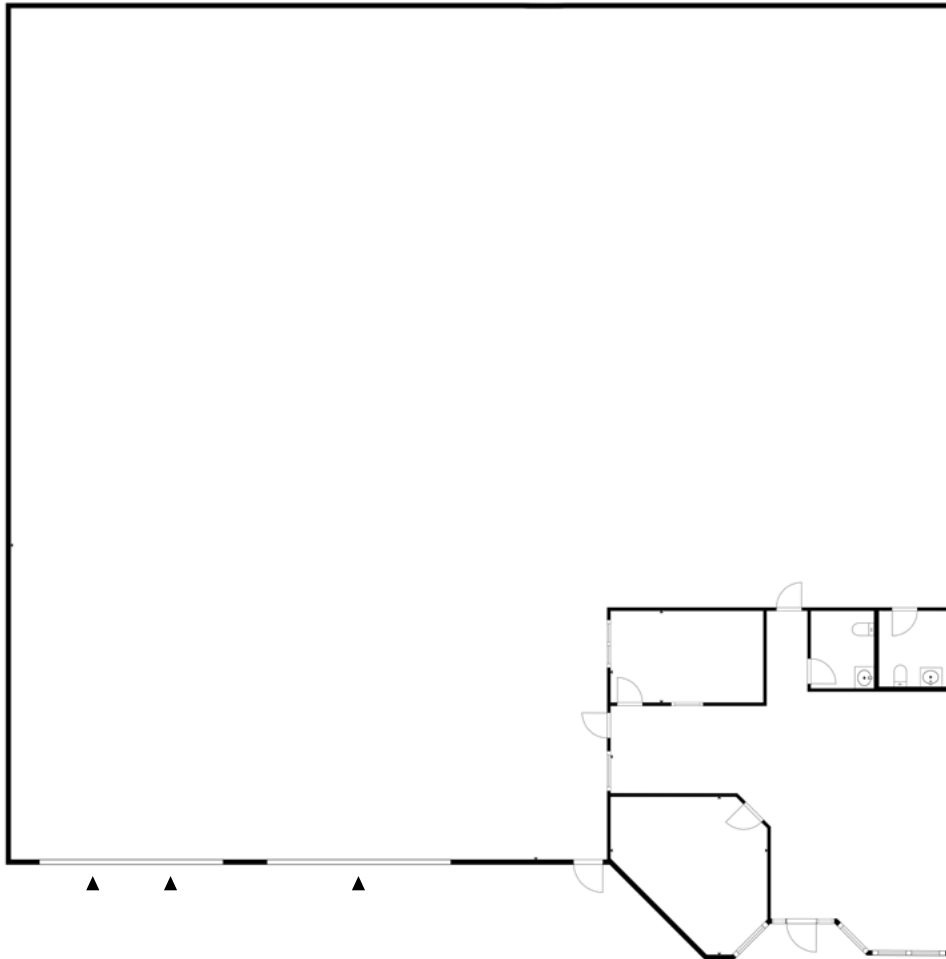
All information references in this document are approximate. The information contained herein is contained from sources deemed reliable. It is provided without representation, warranty, or guarantee, expressed or implied as to accuracy. Prospective buyer or tenant should conduct its own independent investigation relating to the property, government codes and regulations, allowed uses, and all other matters, regardless of whether they are referred to or contained in this document.

# PACIFIC BUSINESS PARK - BLDG C

8637 S 212TH ST | KENT, WA



**Unit 8637**  
6,845 SF Shell | 1,150 SF Office



**LEGEND**  
▶ Dock High Door  
● Grade Level Door

**KERMIT JORGENSEN**  
206.787.1469  
kjorgensen@neilwalter.com

**FLETCHER FARRAR**  
206.787.1469  
ffarrar@neilwalter.com

**JOHN BLEDSOE**  
206.787.1460  
jbledsoe@neilwalter.com

550 S Michigan St  
Seattle, WA 98108  
206.787.1800  
www.neilwalter.com