

BREWERY TOWER BUILDING

FOR LEASE: 8,542 SF

2509-2515 S HOLGATE ST | TACOMA, WA



LEASE INFORMATION

Suite	Available Size	Office Size	Lease Rate	Loading	Clear Height	Power
100	8,542 SF	500 SF	\$0.65/SF	1 DH Door	8 Feet	200 amps

PROPERTY HIGHLIGHTS

- Located in Tacoma's Downtown Historical District
- Warehouse/Residential zoning
- Below market rates
- Within close proximity to I-5 and Hwy-16
- Located near UW Tacoma and Tacoma's Nalley Valley District



JOEL JONES
253.779.2422

jjones@neilwalter.com

CAMERON VALENTINE
253.779.2427

cvalentine@neilwalter.com

All information references in this document are approximate. The information contained herein is contained from sources deemed reliable. It is provided without representation, warranty, or guarantee, expressed or implied as to accuracy. Prospective buyer or tenant should conduct its own independent investigation relating to the property, government codes and regulations, allowed uses, and all other matters, regardless of whether they are referred to or contained in this document.

BREWERY TOWER BUILDING

2509-2515 S HOLGATE ST | TACOMA, WA



DEMOGRAPHICS

2024 Estimate	1-Mile	3-Mile	5-Mile
Population	17,309	1,115,798	277,202
Households	7,092	47,045	109,462
Avg HH Income	\$82,195	\$89,057	\$95,621



JOEL JONES
253.779.2422
jjones@neilwalter.com

CAMERON VALENTINE
253.779.2427
cvalentine@neilwalter.com

1940 East D St, #100
Tacoma, WA 98421
253.779.8400
www.neilwalter.com

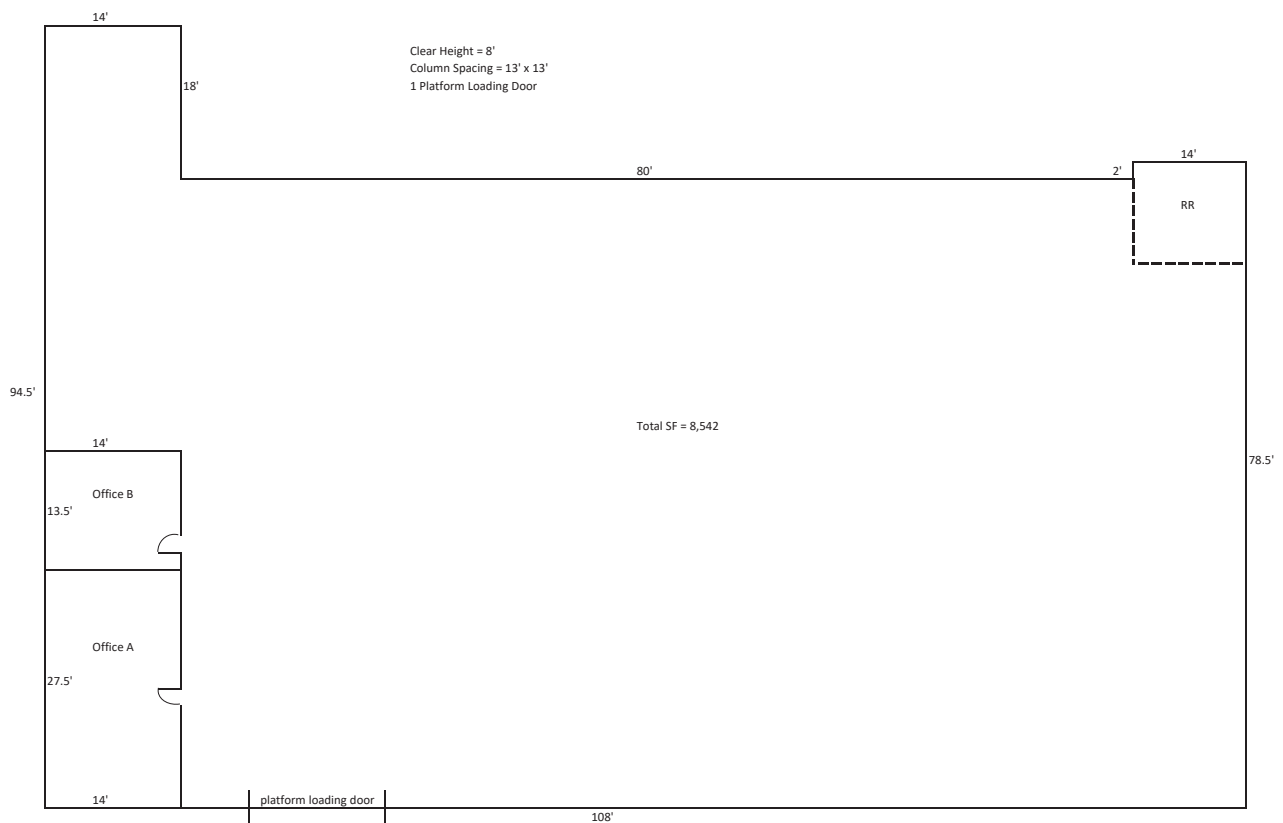
All information references in this document are approximate. The information contained herein is contained from sources deemed reliable. It is provided without representation, warranty, or guarantee, expressed or implied as to accuracy. Prospective buyer or tenant should conduct its own independent investigation relating to the property, government codes and regulations, allowed uses, and all other matters, regardless of whether they are referred to or contained in this document.

BREWERY TOWER BUILDING

2509-2515 S HOLGATE ST | TACOMA, WA



FLOOR PLAN



JOEL JONES
253.779.2422
jjones@neilwalter.com

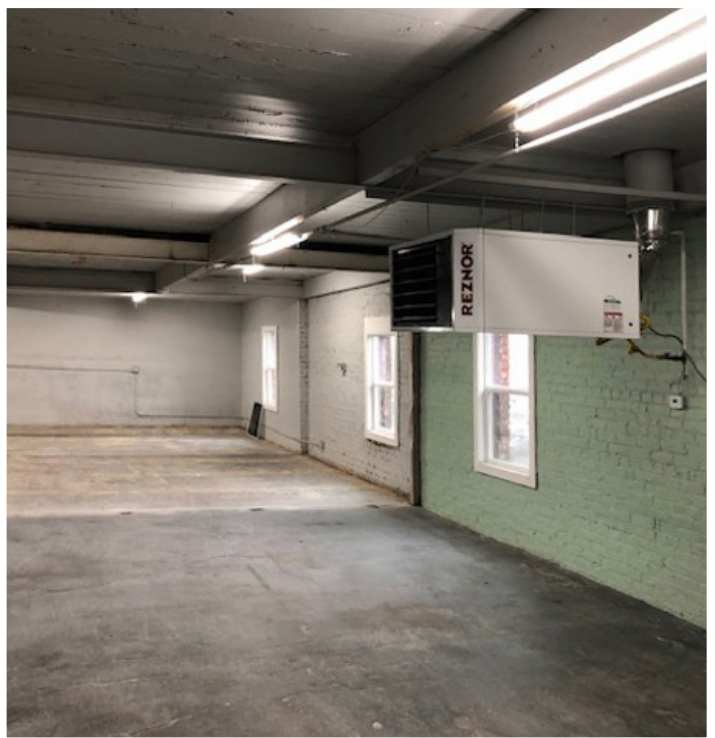
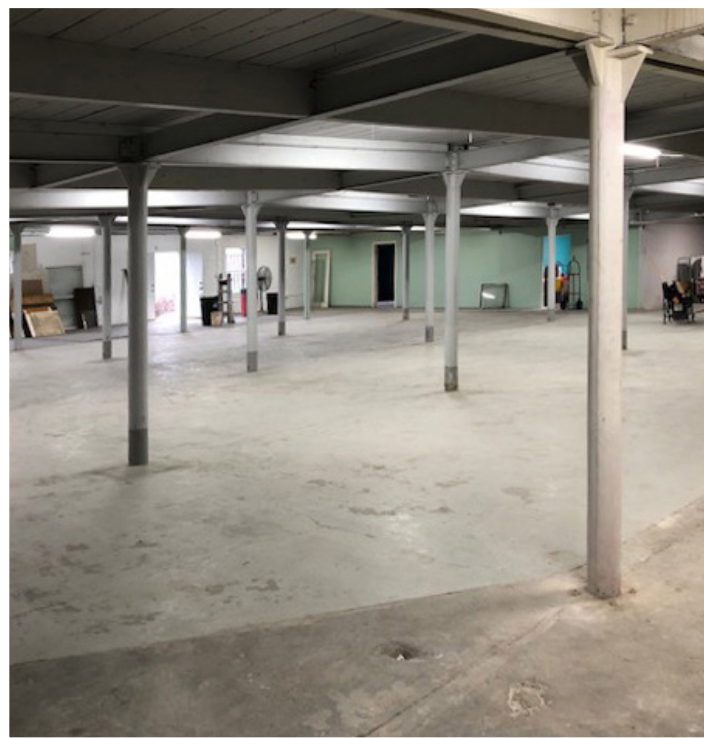
CAMERON VALENTINE
253.779.2427
cvalentine@neilwalter.com

1940 East D St, #100
Tacoma, WA 98421
253.779.8400
www.neilwalter.com

All information references in this document are approximate. The information contained herein is contained from sources deemed reliable. It is provided without representation, warranty, or guarantee, expressed or implied as to accuracy. Prospective buyer or tenant should conduct its own independent investigation relating to the property, government codes and regulations, allowed uses, and all other matters, regardless of whether they are referred to or contained in this document.

BREWERY TOWER BUILDING

2509-2515 S HOLGATE ST | TACOMA, WA



JOEL JONES
253.779.2422
jjones@neilwalter.com

CAMERON VALENTINE
253.779.2427
cvalentine@neilwalter.com

1940 East D St, #100
Tacoma, WA 98421
253.779.8400
www.neilwalter.com

All information references in this document are approximate. The information contained herein is contained from sources deemed reliable. It is provided without representation, warranty, or guarantee, expressed or implied as to accuracy. Prospective buyer or tenant should conduct its own independent investigation relating to the property, government codes and regulations, allowed uses, and all other matters, regardless of whether they are referred to or contained in this document.