

# PACIFIC BUSINESS PARK - BLDG B

2 UNITS AVAILABLE

8627-8631 S 212TH ST | KENT, WA

## HIGH QUALITY INDUSTRIAL SPACE IN THE HEART OF THE KENT VALLEY



### LEASE INFORMATION

|                        |  |
|------------------------|--|
| <b>Unit 8631:</b>      | 3,000 SF (1,285 SF Office)                                     |
| <b>Unit 8629:</b>      | 3,000 SF (1,334 SF Office)                                     |
| <b>Combined Units:</b> | 6,000 SF (2,619 SF Office)                                     |
| <b>Combined Power:</b> | 200 Amps 277/480-volt 3-phase<br>400 Amps 120/208-volt 3-phase |
| <b>Lease Rate:</b>     | Call Broker  |
| <b>Available:</b>      | Now  |

### PROPERTY FEATURES

Enhanced security with gated access, fully fenced and lit property, and roaming nightly patrol

Many amenities nearby

Immediate access to Hwy 167

High image building and landscaping



**KERMIT JORGENSEN**  
206.787.1469  
kjorgensen@neilwalter.com

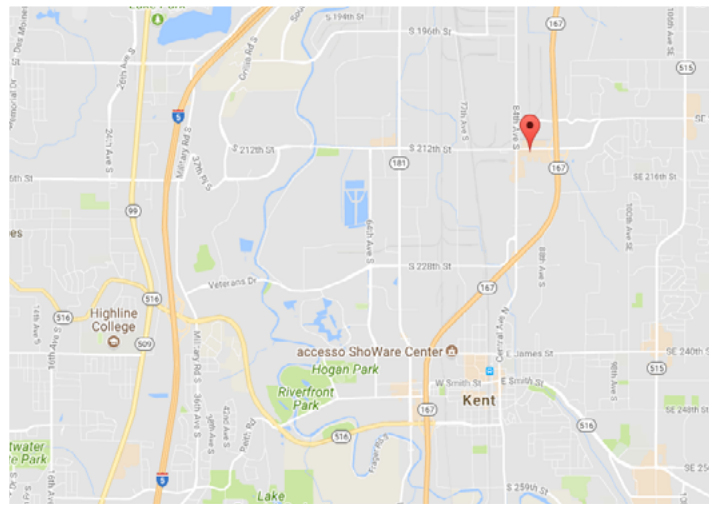
**FLETCHER FARRAR**  
206.787.1469  
ffarrar@neilwalter.com

**JOHN BLEDSOE**  
206.787.1460  
jbledsoe@neilwalter.com

All information references in this document are approximate. The information contained herein is contained from sources deemed reliable. It is provided without representation, warranty, or guarantee, expressed or implied as to accuracy. Prospective buyer or tenant should conduct its own independent investigation relating to the property, government codes and regulations, allowed uses, and all other matters, regardless of whether they are referred to or contained in this document.

# PACIFIC BUSINESS PARK - BLDG B

8627-8631 S 212TH ST | KENT, WA



**KERMIT JORGENSEN**  
206.787.1469  
kjorgensen@neilwalter.com

**FLETCHER FARRAR**  
206.787.1469  
ffarrar@neilwalter.com

**JOHN BLEDSOE**  
206.787.1460  
jbledsoe@neilwalter.com

550 S Michigan St  
Seattle, WA 98108  
206.787.1800  
www.neilwalter.com

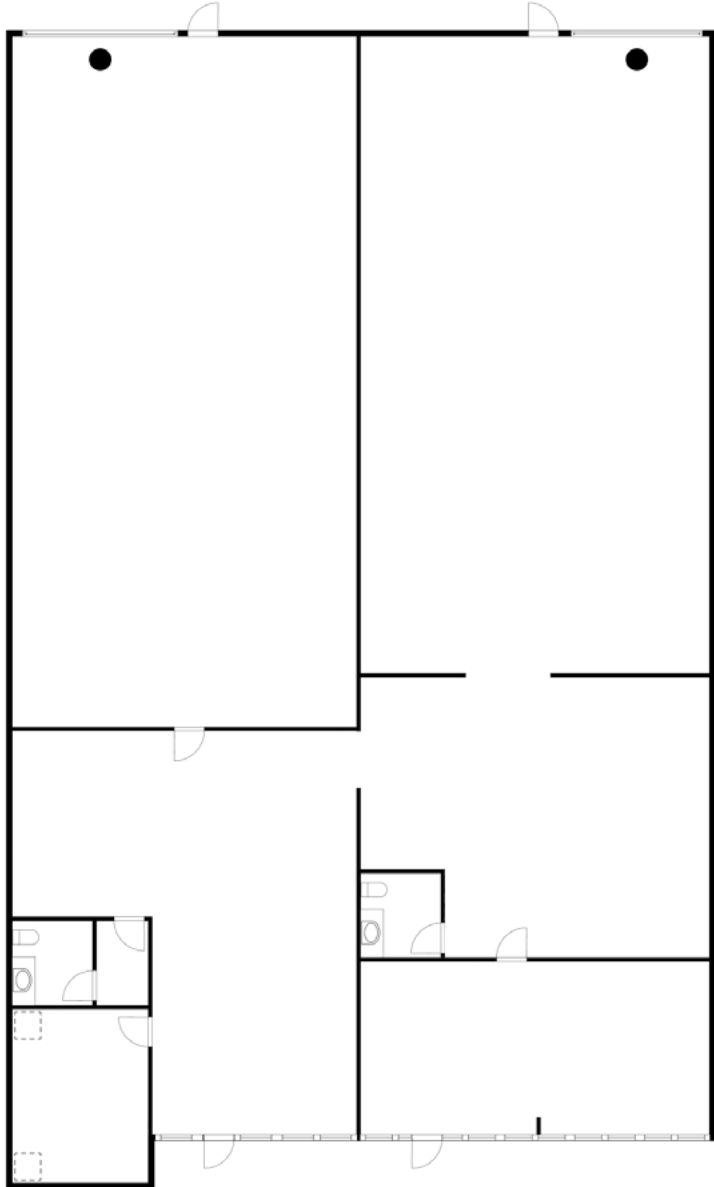
All information references in this document are approximate. The information contained herein is contained from sources deemed reliable. It is provided without representation, warranty, or guarantee, expressed or implied as to accuracy. Prospective buyer or tenant should conduct its own independent investigation relating to the property, government codes and regulations, allowed uses, and all other matters, regardless of whether they are referred to or contained in this document.

# PACIFIC BUSINESS PARK - BLDG B

8627-8631 S 212TH ST | KENT, WA



|  |  |
|--|--|
| <b>Unit 8631</b><br>3,000 SF Shell   1,285 SF Office | <b>Unit 8629</b><br>3,000 SF Shell   1,334 SF Office |
|--|--|



Click or Scan



For Virtual Tour

| LEGEND |                  |
|--------|------------------|
| ▶      | Dock High Door   |
| ●      | Grade Level Door |

**KERMIT JORGENSEN**  
206.787.1469  
kjorgensen@neilwalter.com

**FLETCHER FARRAR**  
206.787.1469  
ffarrar@neilwalter.com

**JOHN BLEDSOE**  
206.787.1460  
jbledsoe@neilwalter.com

550 S Michigan St  
Seattle, WA 98108  
206.787.1800  
www.neilwalter.com

All information references in this document are approximate. The information contained herein is contained from sources deemed reliable. It is provided without representation, warranty, or guarantee, expressed or implied as to accuracy. Prospective buyer or tenant should conduct its own independent investigation relating to the property, government codes and regulations, allowed uses, and all other matters, regardless of whether they are referred to or contained in this document.