

PACIFIC BUSINESS PARK - BLDG B

3 UNITS AVAILABLE

8627-8631 S 212TH ST | KENT, WA

HIGH QUALITY INDUSTRIAL SPACE IN THE HEART OF THE KENT VALLEY



LEASE INFORMATION

Unit 8627:	4,000 SF Shell (450 SF Office)
Lease Rate:	Sublease - Call Broker
Available:	Now
Unit 8629:	3,000 SF (1,285 SF Office)
Unit 8631:	3,000 SF (1,334 SF Office)
Lease Rate:	Call Broker
Available:	10/1/2024

Units can be combined for a total of 6,000 SF or 10,000 SF

PROPERTY FEATURES

Enhanced security with gated access, fully fenced and lit property, and roaming nightly patrol

Many amenities nearby

Immediate access to Hwy 167

High image building and landscaping



KERMIT JORGENSEN
206.787.1469
kjorgensen@neilwalter.com

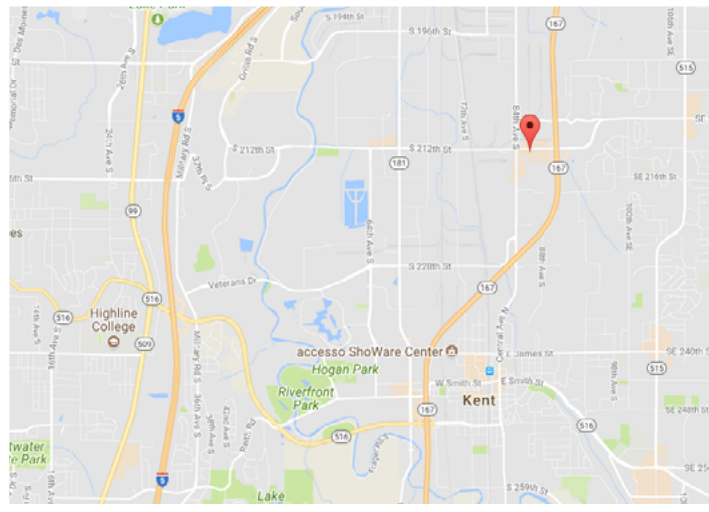
FLETCHER FARRAR
206.787.1469
ffarrar@neilwalter.com

JOHN BLEDSOE
206.787.1460
jbledsoe@neilwalter.com

All information references in this document are approximate. The information contained herein is contained from sources deemed reliable. It is provided without representation, warranty, or guarantee, expressed or implied as to accuracy. Prospective buyer or tenant should conduct its own independent investigation relating to the property, government codes and regulations, allowed uses, and all other matters, regardless of whether they are referred to or contained in this document.

PACIFIC BUSINESS PARK - BLDG B

8627-8631 S 212TH ST | KENT, WA



KERMIT JORGENSEN
206.787.1469
kjorgensen@neilwalter.com

FLETCHER FARRAR
206.787.1469
ffarrar@neilwalter.com

JOHN BLEDSOE
206.787.1460
jbledsoe@neilwalter.com

550 S Michigan St
Seattle, WA 98108
206.787.1800
www.neilwalter.com

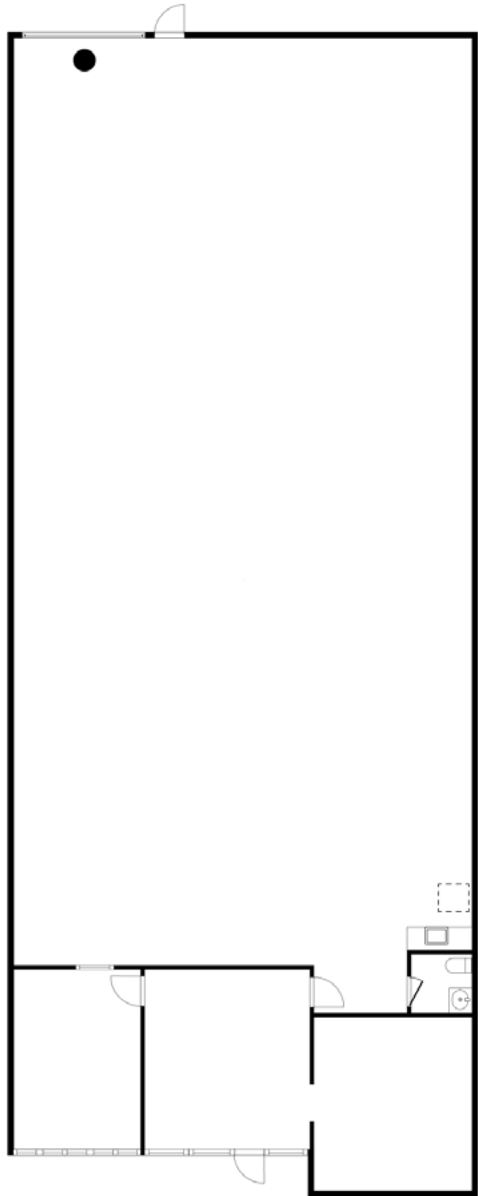
All information references in this document are approximate. The information contained herein is contained from sources deemed reliable. It is provided without representation, warranty, or guarantee, expressed or implied as to accuracy. Prospective buyer or tenant should conduct its own independent investigation relating to the property, government codes and regulations, allowed uses, and all other matters, regardless of whether they are referred to or contained in this document.

PACIFIC BUSINESS PARK - BLDG B

8627-8631 S 212TH ST | KENT, WA



Unit 8627
4,000 SF Shell | 450 SF Office



LEGEND
▶ Dock High Door
● Grade Level Door

KERMIT JORGENSEN
206.787.1469
kjorgensen@neilwalter.com

FLETCHER FARRAR
206.787.1469
ffarrar@neilwalter.com

JOHN BLEDSOE
206.787.1460
jbledsoe@neilwalter.com

550 S Michigan St
Seattle, WA 98108
206.787.1800
www.neilwalter.com

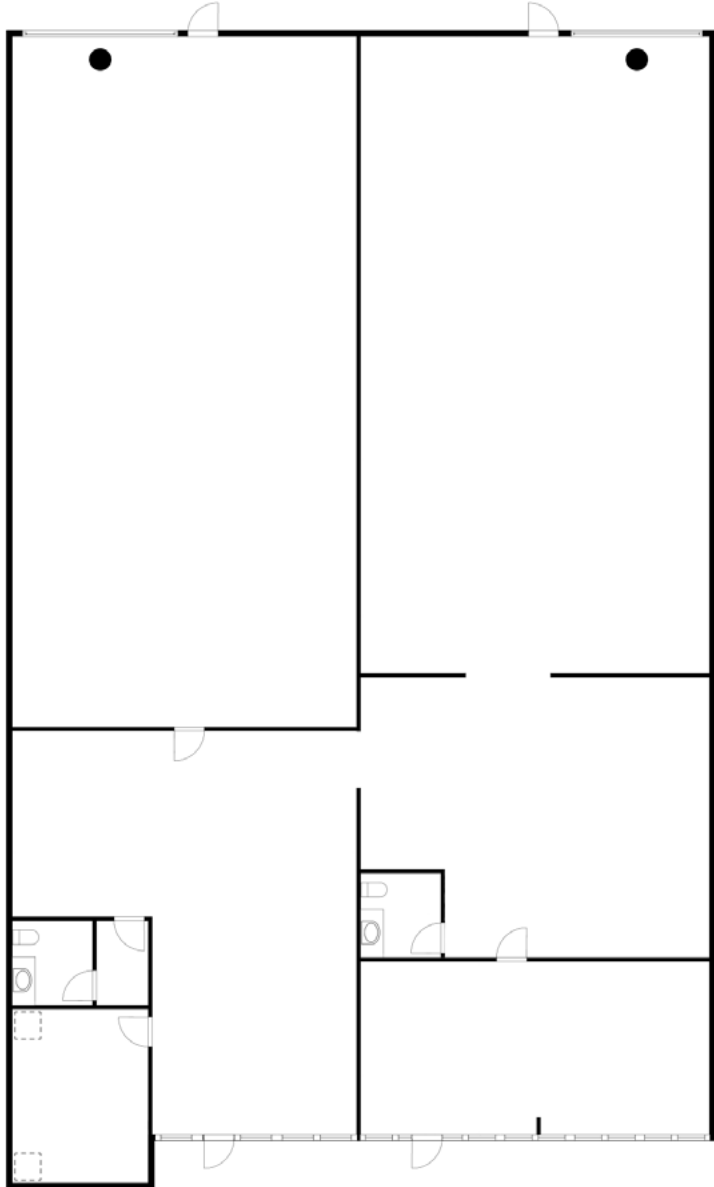
All information references in this document are approximate. The information contained herein is contained from sources deemed reliable. It is provided without representation, warranty, or guarantee, expressed or implied as to accuracy. Prospective buyer or tenant should conduct its own independent investigation relating to the property, government codes and regulations, allowed uses, and all other matters, regardless of whether they are referred to or contained in this document.

PACIFIC BUSINESS PARK - BLDG B

8627-8631 S 212TH ST | KENT, WA



Unit 8629 3,000 SF Shell 1,285 SF Office	Unit 8631 3,000 SF Shell 1,334 SF Office
--	--



Click or Scan



For Virtual Tour

LEGEND
▶ Dock High Door
● Grade Level Door

KERMIT JORGENSEN
206.787.1469
kjorgensen@neilwalter.com

FLETCHER FARRAR
206.787.1469
ffarrar@neilwalter.com

JOHN BLEDSOE
206.787.1460
jbledsoe@neilwalter.com

550 S Michigan St
Seattle, WA 98108
206.787.1800
www.neilwalter.com

All information references in this document are approximate. The information contained herein is contained from sources deemed reliable. It is provided without representation, warranty, or guarantee, expressed or implied as to accuracy. Prospective buyer or tenant should conduct its own independent investigation relating to the property, government codes and regulations, allowed uses, and all other matters, regardless of whether they are referred to or contained in this document.