

2601 S 35TH STREET

FOR LEASE: 4,276 SF Available

TACOMA, WA 98409

NEW OWNERSHIP, NEW RATES, NEW LEASING!



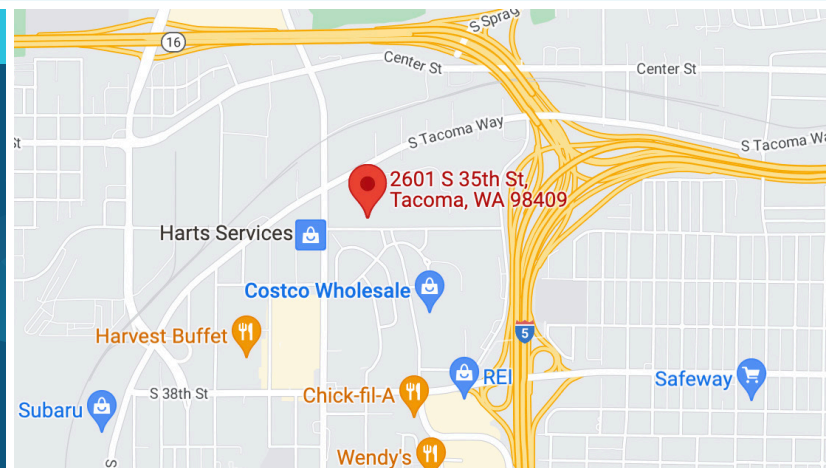
LEASE INFORMATION

Suite	Size	Lease Rate	Lease Type	Available
100B	4,276 SF	\$14-\$18/SF/Month	NNN	Now

UP TO 3 YEARS FREE RENT ON THE RIGHT DEAL

PROPERTY HIGHLIGHTS

- Quick and easy access to I-5, I-705 and Hwy-16
- Private suite entrances
- Exterior courtyard
- Close proximity to amenities including Costco, Tacoma Mall, Pierce County Annex & various restaurants
- Abundant, secure parking



SAM HIGHSMITH
253.779.8400
shighsmith@neilwalter.com

All information references in this document are approximate. The information contained herein is contained from sources deemed reliable. It is provided without representation, warranty, or guarantee, expressed or implied as to accuracy. Prospective buyer or tenant should conduct its own independent investigation relating to the property, government codes and regulations, allowed uses, and all other matters, regardless of whether they are referred to or contained in this document.

2601 S 35TH STREET

TACOMA, WA 98409



LEASE INFORMATION

Suite	Size	Lease Rate	Lease Type	Available
100B	4,276 SF	\$14-\$18/SF/Month	NNN	Now



SAM HIGHSMITH
253.779.8400
shighsmith@neilwalter.com

1940 East D St #100
Tacoma, WA 98421
253.779.8400
www.neilwalter.com

All information references in this document are approximate. The information contained herein is contained from sources deemed reliable. It is provided without representation, warranty, or guarantee, expressed or implied as to accuracy. Prospective buyer or tenant should conduct its own independent investigation relating to the property, government codes and regulations, allowed uses, and all other matters, regardless of whether they are referred to or contained in this document.

2601 S 35TH STREET

TACOMA, WA 98409



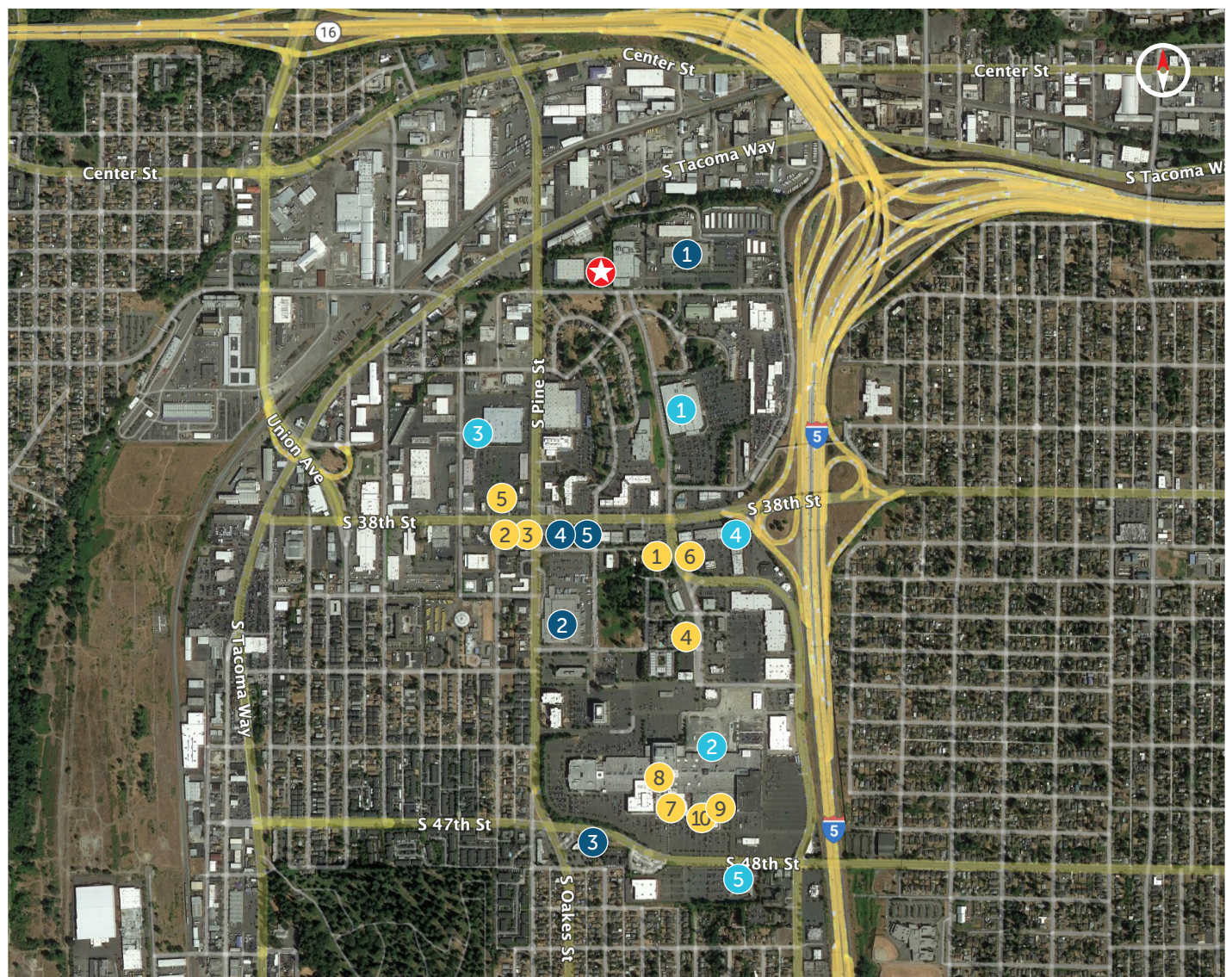
SAM HIGHSMITH
253.779.8400
shighsmith@neilwalter.com

1940 East D St #100
Tacoma, WA 98421
253.779.8400
www.neilwalter.com

All information references in this document are approximate. The information contained herein is contained from sources deemed reliable. It is provided without representation, warranty, or guarantee, expressed or implied as to accuracy. Prospective buyer or tenant should conduct its own independent investigation relating to the property, government codes and regulations, allowed uses, and all other matters, regardless of whether they are referred to or contained in this document.

2601 S 35TH STREET

TACOMA, WA 98409



Restaurants:

- | | | | |
|---|-------------|----|------------------------|
| 1 | Chick-fil-a | 6 | Red Robin |
| 2 | McDonald's | 7 | Texas De Brazil |
| 3 | Taco Time | 8 | The Cheesecake Factory |
| 4 | Wendy's | 9 | MOD Pizza |
| 5 | Burger King | 10 | BJ's Restaurant |

Shopping:

- | | |
|---|-------------|
| 1 | CostCo |
| 2 | Tacoma Mall |
| 3 | Ross |
| 4 | REI |
| 5 | Best Buy |

Other Businesses:

- | | |
|---|-----------------------|
| 1 | Pierce County Annex |
| 2 | Post Office |
| 3 | Social Security |
| 4 | Concentra Urgent Care |
| 5 | The UPS Store |

SAM HIGHSMITH

253.779.8400

shighsmith@neilwalter.com

1940 East D St #100

Tacoma, WA 98421

253.779.8400

www.neilwalter.com

All information references in this document are approximate. The information contained herein is contained from sources deemed reliable. It is provided without representation, warranty, or guarantee, expressed or implied as to accuracy. Prospective buyer or tenant should conduct its own independent investigation relating to the property, government codes and regulations, allowed uses, and all other matters, regardless of whether they are referred to or contained in this document.