

KENT 85TH PLACE INDUSTRIAL

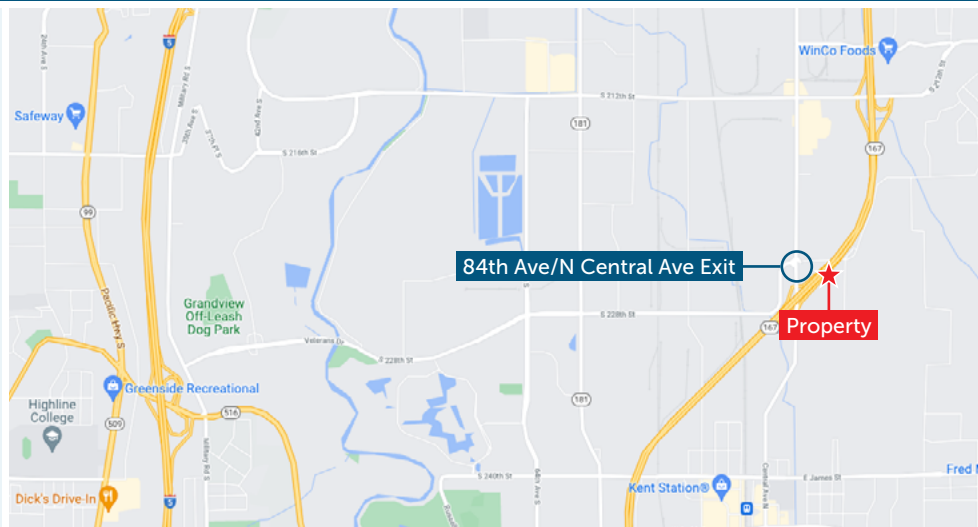
FOR LEASE: 2,644 SF AVAILABLE

22602 85TH PL S | KENT, WA 98031



INDUSTRIAL SPACE IN CENTRAL KENT LOCATED JUST OFF HWY-167

Suite:	22602
Available SF:	2,644 SF
Office SF:	219 SF
Loading:	1 GL Door
Clear Height:	12 Feet
Available:	Now
Lease Rate:	\$1.30/SF/Mo + NNN



JOEL JONES
253.779.2422

jjones@neilwalter.com

NICK RATZKE, SIOR
253.779.2414

nratzke@neilwalter.com

All information references in this document are approximate. The information contained herein is contained from sources deemed reliable. It is provided without representation, warranty, or guarantee, expressed or implied as to accuracy. Prospective buyer or tenant should conduct its own independent investigation relating to the property, government codes and regulations, allowed uses, and all other matters, regardless of whether they are referred to or contained in this document.

KENT 85TH PLACE INDUSTRIAL

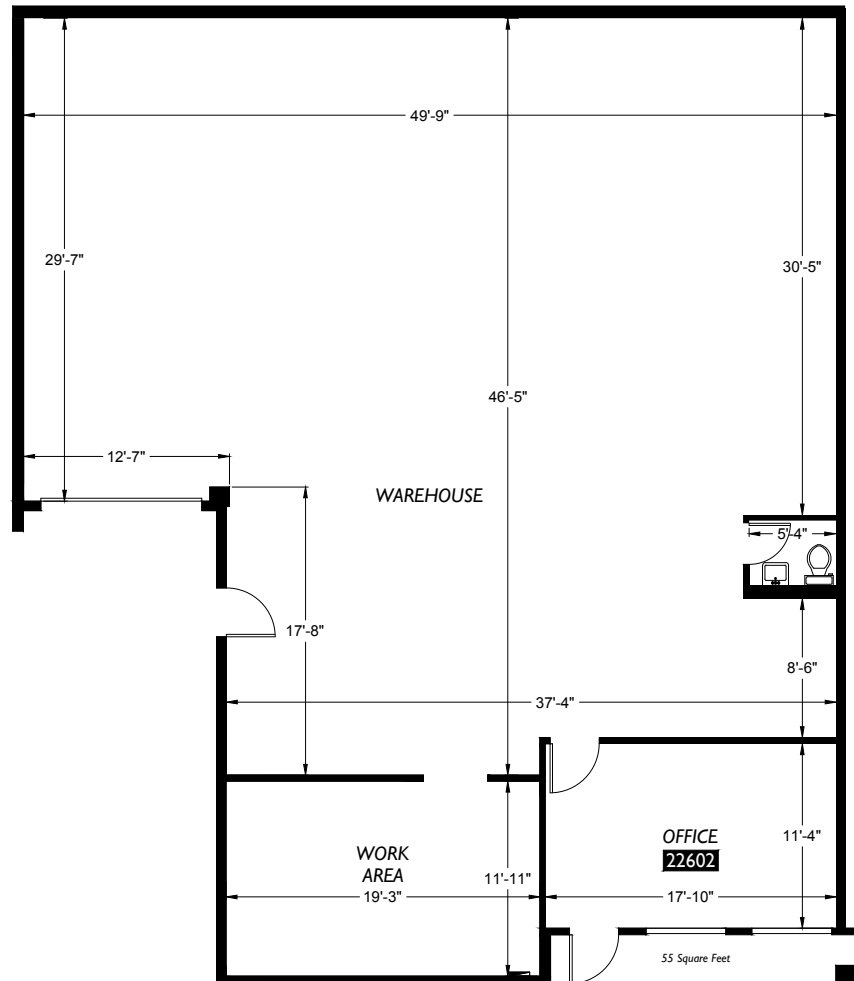
22602 85TH PL S | KENT, WA 98031



SUITE 22602

2,644 SF TOTAL

219 SF OFFICE



JOEL JONES
253.779.2422
jjones@neilwalter.com

NICK RATZKE, SIOR
253.779.2414
nratzke@neilwalter.com

1940 East D St, #100
Tacoma, WA 98421
253.779.8400
www.neilwalter.com

All information references in this document are approximate. The information contained herein is contained from sources deemed reliable. It is provided without representation, warranty, or guarantee, expressed or implied as to accuracy. Prospective buyer or tenant should conduct its own independent investigation relating to the property, government codes and regulations, allowed uses, and all other matters, regardless of whether they are referred to or contained in this document.