

# HILL INDUSTRIAL - 190B

FOR LEASE - 34,574 SF

8939 S 190TH ST | KENT, WA 98032

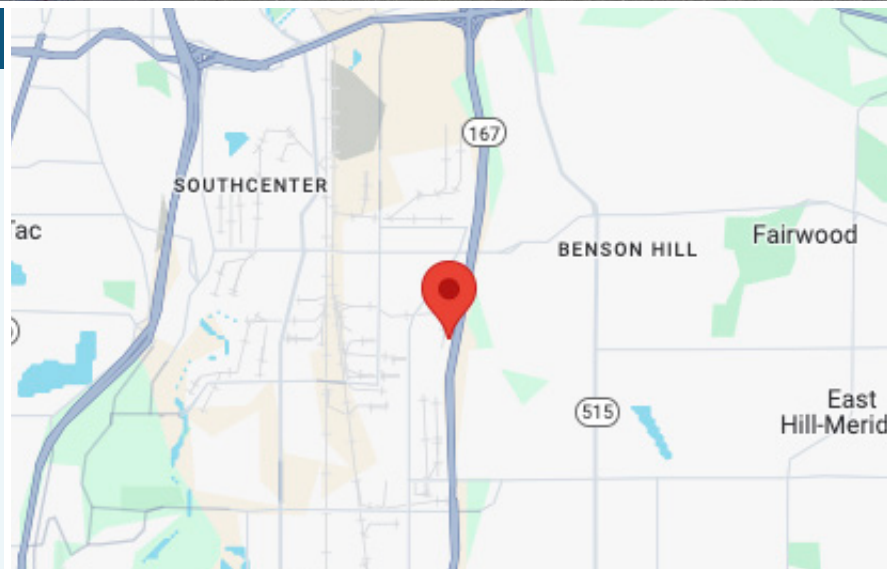
## 50 YARD LINE IN KENT WITH FENCED YARD



### LEASE INFORMATION

|                 |             |
|-----------------|-------------|
| Available Size: | 34,574 SF   |
| Office Size:    | 1,814 SF    |
| Lease Rate:     | Call Broker |
| Lease Type:     | NNN         |
| Loading:        | 1 GL; 7 DH  |
| Clear Height:   | 24'         |
| Available:      | Now         |

Site can have rail access (Burlington Northern). Tenant would need to do minor modifications to spur.



**JOE SCALZO**  
206.719.7104  
jscalzo@neilwalter.com

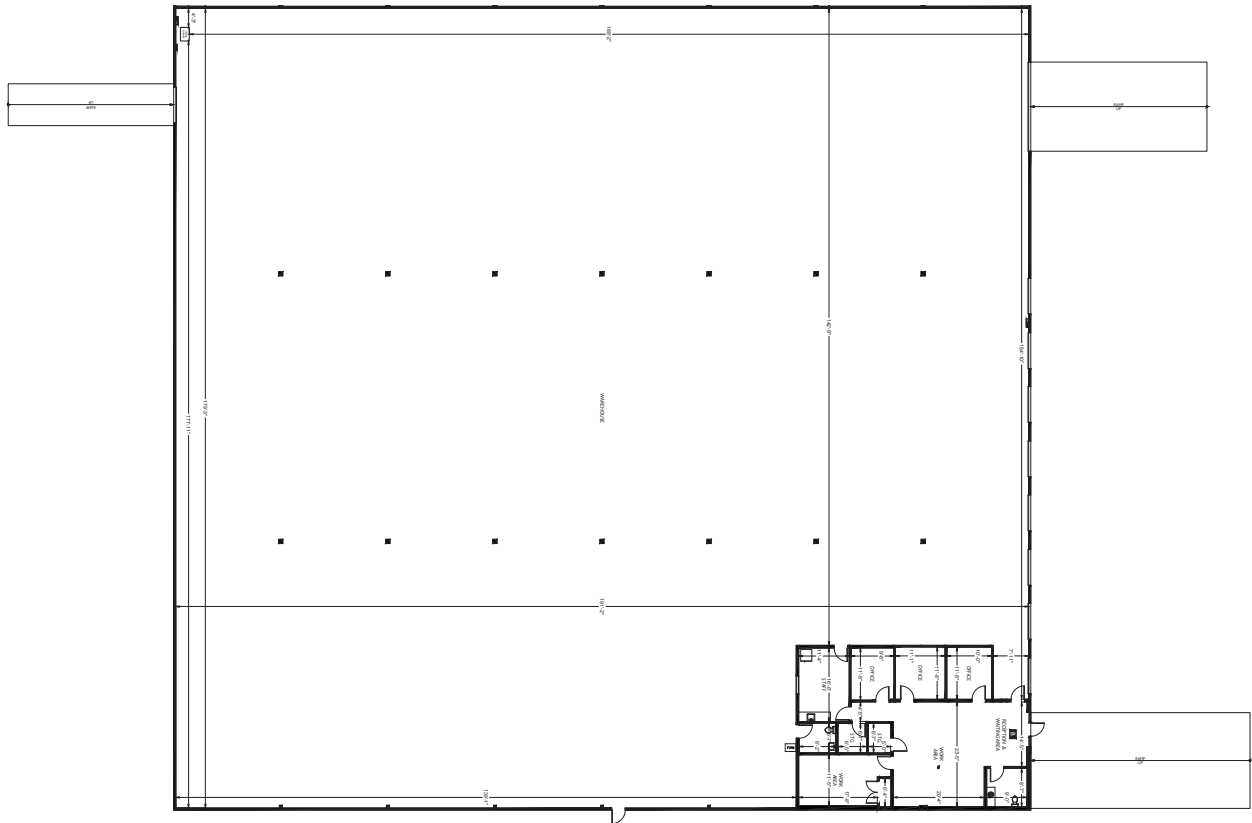
All information references in this document are approximate. The information contained herein is contained from sources deemed reliable. It is provided without representation, warranty, or guarantee, expressed or implied as to accuracy. Prospective buyer or tenant should conduct its own independent investigation relating to the property, government codes and regulations, allowed uses, and all other matters, regardless of whether they are referred to or contained in this document.

# HILL INDUSTRIAL - 190B

8939 S 190TH ST | KENT, WA 98032



AVAILABLE SIZE  
34,574 SF



**JOE SCALZO**  
206.719.7104

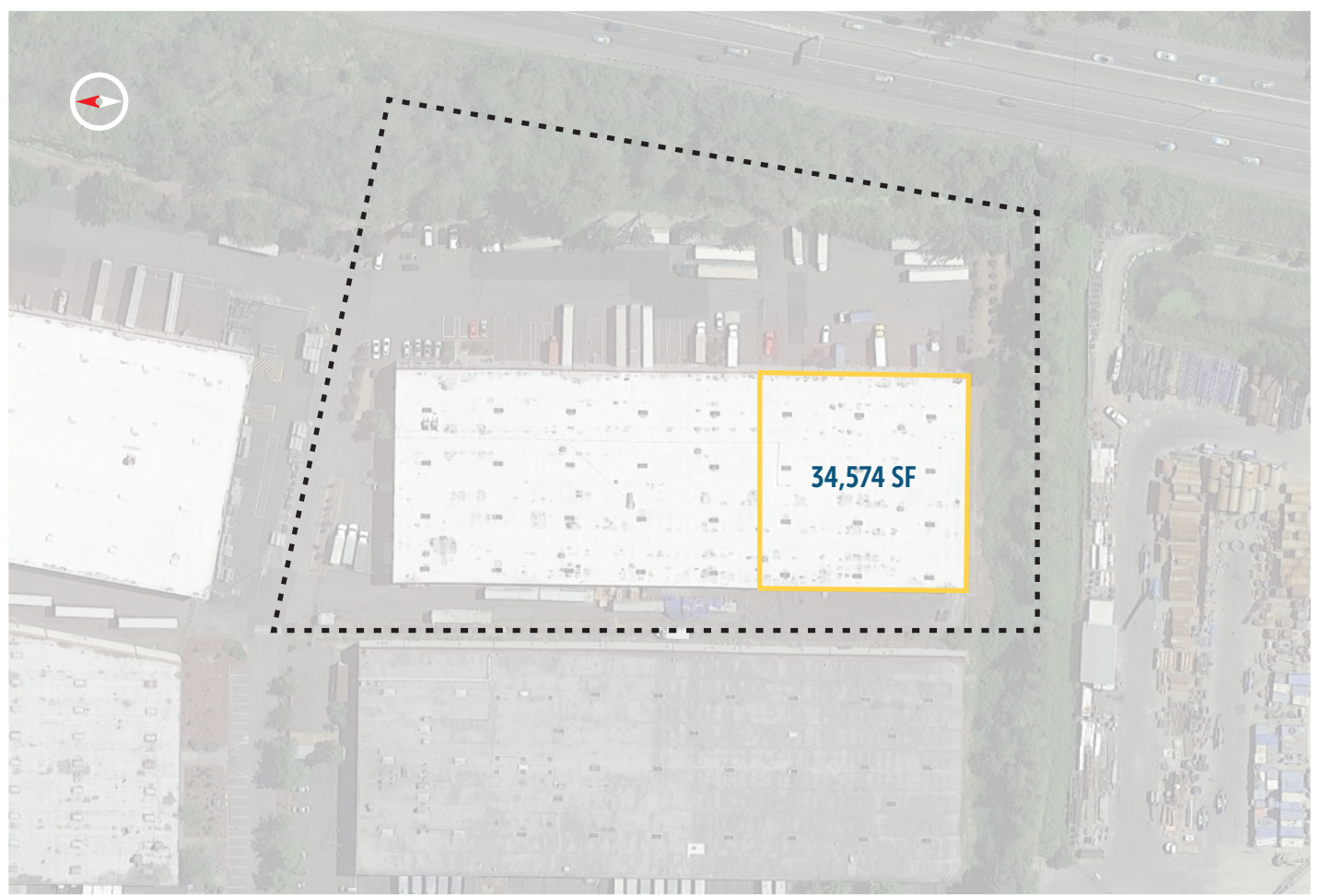
[jscalzo@neilwalter.com](mailto:jscalzo@neilwalter.com)

550 S Michigan St,  
Seattle, WA 98108  
206.787.1800  
[www.neilwalter.com](http://www.neilwalter.com)

All information references in this document are approximate. The information contained herein is contained from sources deemed reliable. It is provided without representation, warranty, or guarantee, expressed or implied as to accuracy. Prospective buyer or tenant should conduct its own independent investigation relating to the property, government codes and regulations, allowed uses, and all other matters, regardless of whether they are referred to or contained in this document.

# HILL INDUSTRIAL - 190B

8939 S 190TH ST | KENT, WA 98032



**JOE SCALZO**  
206.719.7104

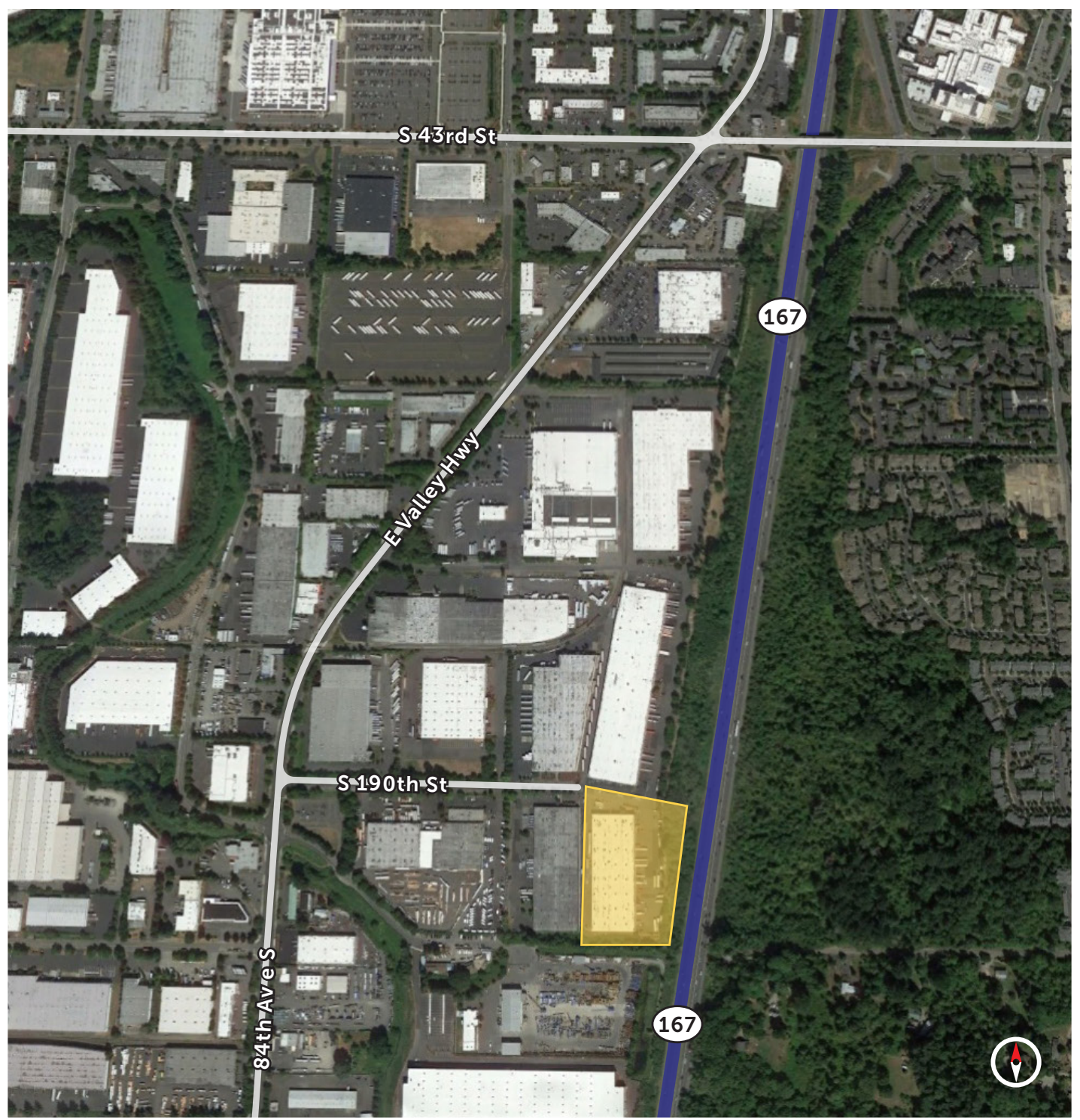
[jscalzo@neilwalter.com](mailto:jscalzo@neilwalter.com)

550 S Michigan St,  
Seattle, WA 98108  
206.787.1800  
[www.neilwalter.com](http://www.neilwalter.com)

All information references in this document are approximate. The information contained herein is contained from sources deemed reliable. It is provided without representation, warranty, or guarantee, expressed or implied as to accuracy. Prospective buyer or tenant should conduct its own independent investigation relating to the property, government codes and regulations, allowed uses, and all other matters, regardless of whether they are referred to or contained in this document.

# HILL INDUSTRIAL - 190B

8939 S 190TH ST | KENT, WA 98032



**JOE SCALZO**  
206.719.7104

[jscalzo@neilwalter.com](mailto:jscalzo@neilwalter.com)

550 S Michigan St,  
Seattle, WA 98108  
206.787.1800  
[www.neilwalter.com](http://www.neilwalter.com)

All information references in this document are approximate. The information contained herein is contained from sources deemed reliable. It is provided without representation, warranty, or guarantee, expressed or implied as to accuracy. Prospective buyer or tenant should conduct its own independent investigation relating to the property, government codes and regulations, allowed uses, and all other matters, regardless of whether they are referred to or contained in this document.