

# PACIFIC GEORGETOWN

6363 7TH AVENUE SOUTH | SEATTLE, WA 98108

FREE STANDING, HIGH QUALITY FLEX



AVAILABLE SIZES - 3,190 SF SF & 5,168 SF (8,358 SF) FLEX

NOW LEASING

 NEIL WALTER  
C O M P A N Y

 NAI Puget Sound  
Properties

# PACIFIC GEORGETOWN PROPERTY OVERVIEW

550 S Michigan St  
Seattle, WA 98108

206.787.1800  
www.neilwalter.com

## AVAILABLE SPACES

Suite 100:	3,190 SF
Suite 110:	5,168 SF (divisible)
Combined:	8,358 RSF

## PROPERTY FEATURES

Flex/Storage

1 Grade-Level Door

Heavy 220/480 Power

12' Clearance

Sprinklered

Climate Controlled

Abundant Natural Light

**ED HOGAN**

206.755.3345

ehogan@neilwalter.com



**JOHN WERDEL**

206.332.1488

jwerdel@nai-psp.com



All information references in this document are approximate. The information contained herein is contained from sources deemed reliable. It is provided without representation, warranty, or guarantee, expressed or implied as to accuracy. Prospective buyer or tenant should conduct its own independent investigation relating to the property, government codes and regulations, allowed uses, and all other matters, regardless of whether they are referred to or contained in this document.

# PACIFIC GEORGETOWN PROPERTY LOCATION

550 S Michigan St  
Seattle, WA 98108

206.787.1800  
www.neilwalter.com



**ED HOGAN**

206.755.3345

ehogan@neilwalter.com

**W NEIL WALTER**  
COMPANY

**JOHN WERDEL**

206.332.1488

jwerdel@nai-psp.com

**NAI Puget Sound**  
Properties

All information references in this document are approximate. The information contained herein is contained from sources deemed reliable. It is provided without representation, warranty, or guarantee, expressed or implied as to accuracy. Prospective buyer or tenant should conduct its own independent investigation relating to the property, government codes and regulations, allowed uses, and all other matters, regardless of whether they are referred to or contained in this document.

# PACIFIC GEORGETOWN FLOOR PLANS

550 S Michigan St  
Seattle, WA 98108

206.787.1800  
www.neilwalter.com

**ED HOGAN**

206.755.3345

ehogan@neilwalter.com



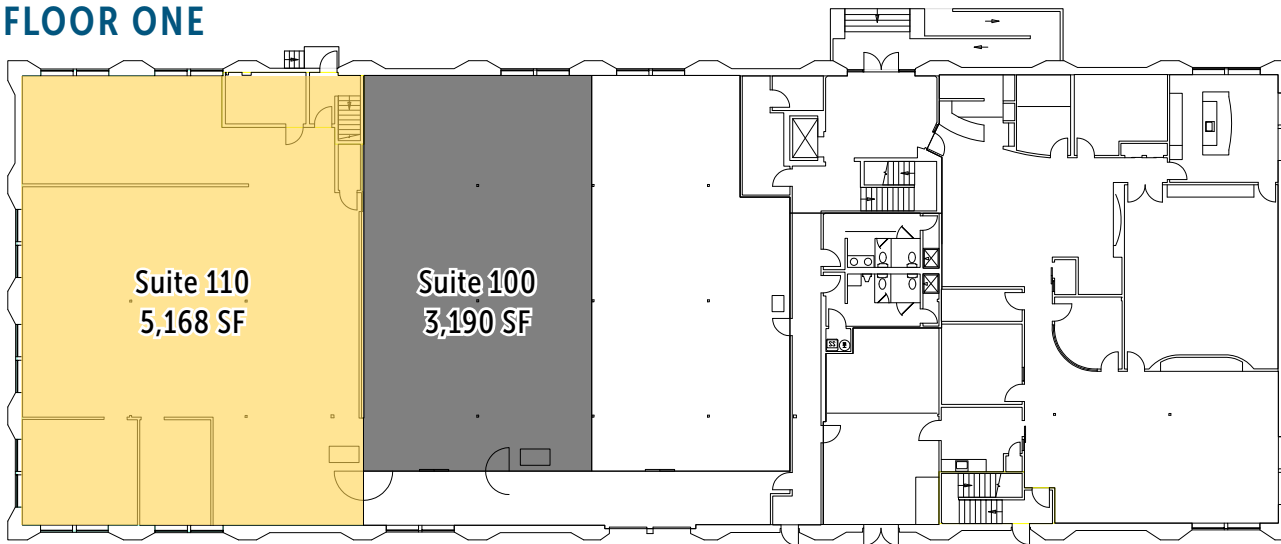
**JOHN WERDEL**

206.332.1488

jwerdel@nai-psp.com



## FLOOR ONE



CLICK FOR VIRTUAL TOUR



All information references in this document are approximate. The information contained herein is contained from sources deemed reliable. It is provided without representation, warranty, or guarantee, expressed or implied as to accuracy. Prospective buyer or tenant should conduct its own independent investigation relating to the property, government codes and regulations, allowed uses, and all other matters, regardless of whether they are referred to or contained in this document.