

# PACIFIC GEORGETOWN

6363 7TH AVENUE SOUTH | SEATTLE, WA 98108

FREE STANDING, HIGH QUALITY OFFICE/FLEX



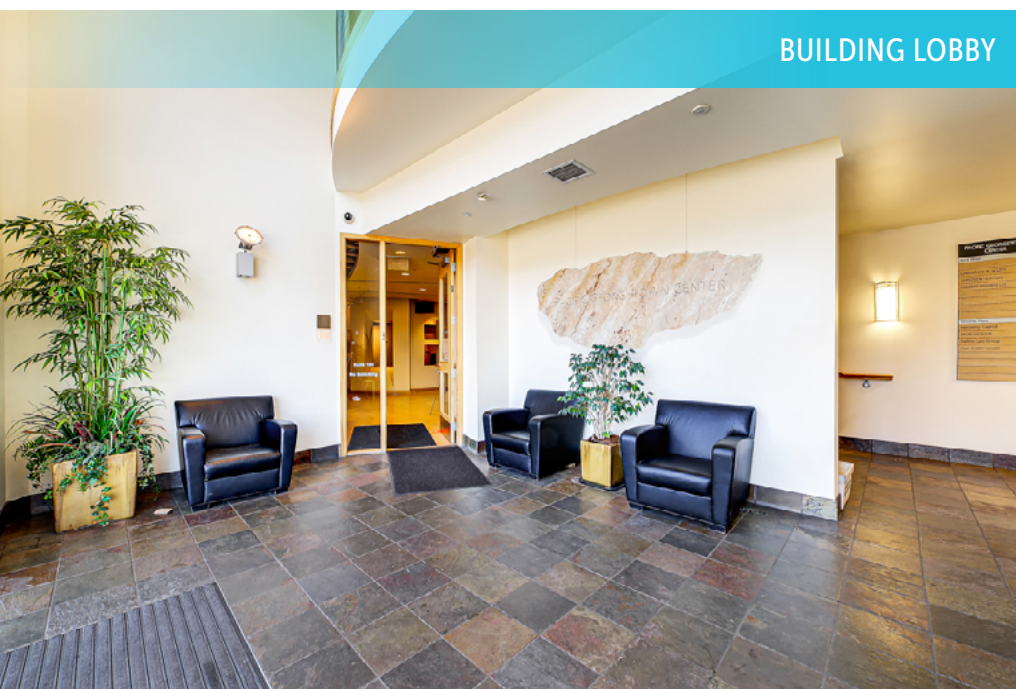
AVAILABLE SIZES - 2,498 SF & 2,854 SF OFFICE / 5,168 SF FLEX

NOW LEASING

**NW** NEIL WALTER  
C O M P A N Y

**NAI** Puget Sound  
Properties

# PACIFIC GEORGETOWN PROPERTY OVERVIEW



BUILDING LOBBY



SUITE 220

## AVAILABLE SPACE

- |            |  |
|------------|--|
| Suite 240: | 2,498 RSF — Office <ul style="list-style-type: none"><li>• 3 Private Offices</li><li>• Sink / Coffee Bar</li><li>• Abundant Natural Light</li></ul>  |
| Suite 220: | 2,854 RSF — Office <ul style="list-style-type: none"><li>• 6 Private Offices</li><li>• Kitchen</li><li>• Conference Room</li><li>• Abundant Natural Light</li></ul>  |
| Suite 110: | 5,168 RSF — Flex / Storage <ul style="list-style-type: none"><li>• 1 Grade Level Door</li><li>• Heavy Power</li><li>• Abundant Natural Light</li><li>• 12' Clear Height</li><li>• Climate Controller</li></ul> |

## PROPERTY FEATURES

Dynamic Georgetown Neighborhood

Quick Access to I-5

A Block from Starbucks

Free Parking

Fully Sprinklered

Fully Secured Building

Abundant Natural Light

# PACIFIC GEORGETOWN PROPERTY LOCATION

550 S Michigan St  
Seattle, WA 98108

206.787.1800  
www.neilwalter.com



**ED HOGAN**

206.755.3345

ehogan@neilwalter.com

**W NEIL WALTER**  
COMPANY

**JOHN WERDEL**

206.332.1488

jwerdel@nai-psp.com

**NAI Puget Sound**  
Properties

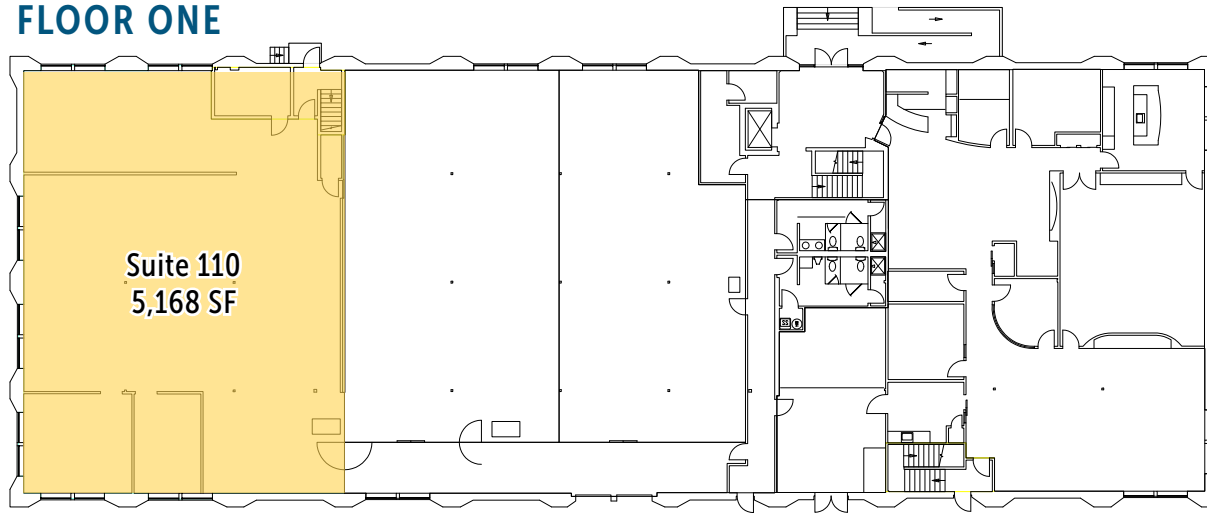
All information references in this document are approximate. The information contained herein is contained from sources deemed reliable. It is provided without representation, warranty, or guarantee, expressed or implied as to accuracy. Prospective buyer or tenant should conduct its own independent investigation relating to the property, government codes and regulations, allowed uses, and all other matters, regardless of whether they are referred to or contained in this document.

# PACIFIC GEORGETOWN FLOOR PLANS

550 S Michigan St  
Seattle, WA 98108

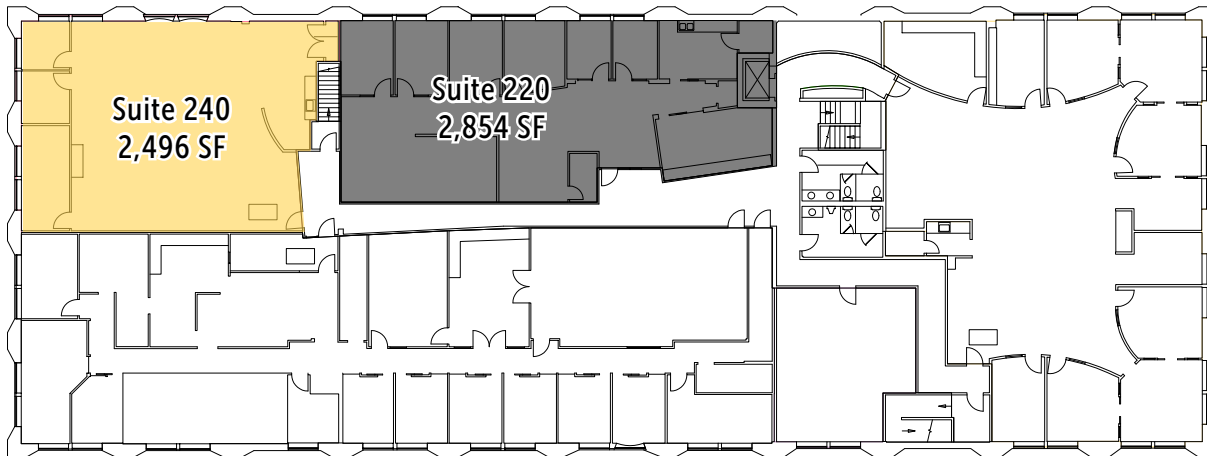
206.787.1800  
www.neilwalter.com

## FLOOR ONE



[CLICK FOR VIRTUAL TOUR](#) 

## FLOOR TWO



[CLICK FOR VIRTUAL TOUR](#) 

**ED HOGAN**  
206.755.3345  
ehogan@neilwalter.com



**JOHN WERDEL**  
206.332.1488  
jwerdel@nai-psp.com



All information references in this document are approximate. The information contained herein is contained from sources deemed reliable. It is provided without representation, warranty, or guarantee, expressed or implied as to accuracy. Prospective buyer or tenant should conduct its own independent investigation relating to the property, government codes and regulations, allowed uses, and all other matters, regardless of whether they are referred to or contained in this document.