

TUMWATER, WA

TUMWATER

CORPORATE CENTER

FOR LEASE

Building 2: 199,950 SF Available

READY FOR OCCUPANCY - CLASS A NEW CONSTRUCTION



LEASE INFORMATION

	Bldg 2
Available:	199,950 SF
Dock Doors:	44
Grade Level Doors:	4
Parking:	115
Trailer Parking:	133

PROPERTY FEATURES

Site Acres:	37.55
Clear Height:	36'
Column Spacing:	50' x 56'
Sprinkler:	ESFR
Warehouse Slab:	7" reinforced
Power:	3000 amp 277/480-volt electrical service
Utility Service:	Puget Sound Energy

Exclusive Advisors:



SCOTT PRICE
253 779 2419
sprice@neilwalter.com

JOEL JONES
253 779 2422
jjones@neilwalter.com

STEVE SHAUL
213 446 7714
sshaul@crowholdings.com

PHIL PRASSAS
312 952 7314
pprassas@crowholdings.com

CROW HOLDINGS
INDUSTRIAL

All information references in this document are approximate. The information contained herein is contained from sources deemed reliable. It is provided without representation, warranty, or guarantee, expressed or implied as to accuracy. Prospective buyer or tenant should conduct its own independent investigation relating to the property, government codes and regulations, allowed uses, and all other matters, regardless of whether they are referred to or contained in this document.

TUMWATER, WA

TUMWATER

CORPORATE CENTER



TUMWATER, WA

TUMWATER

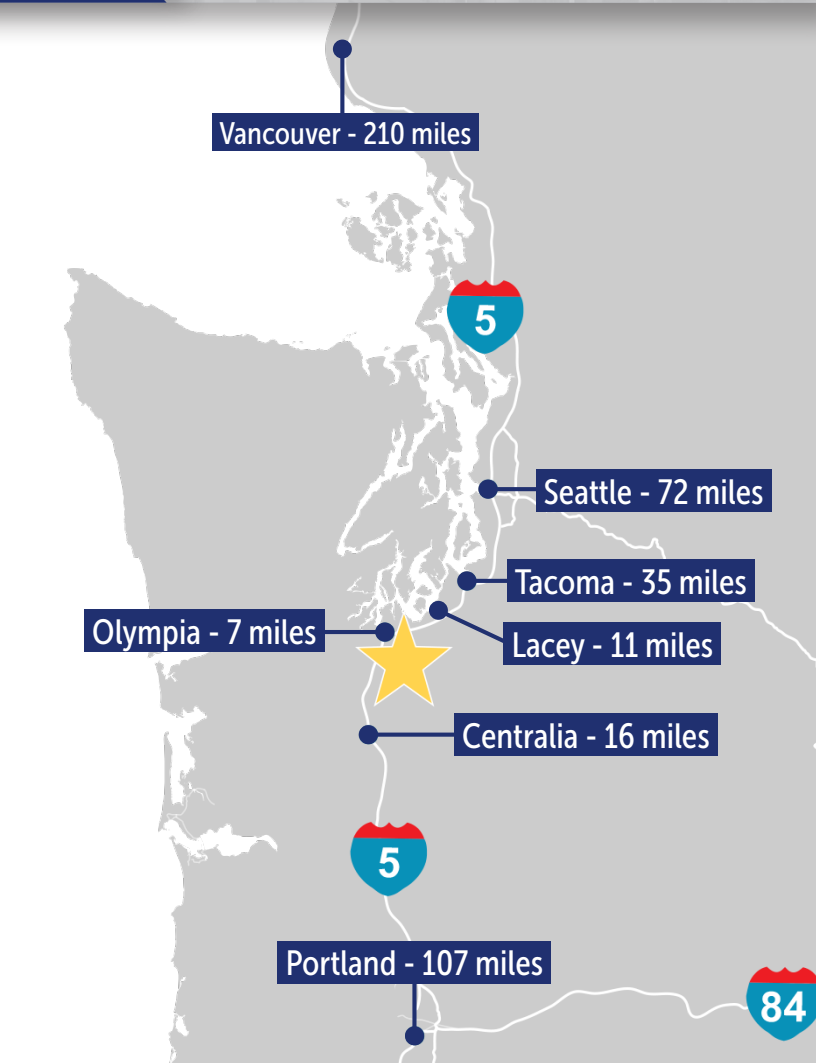
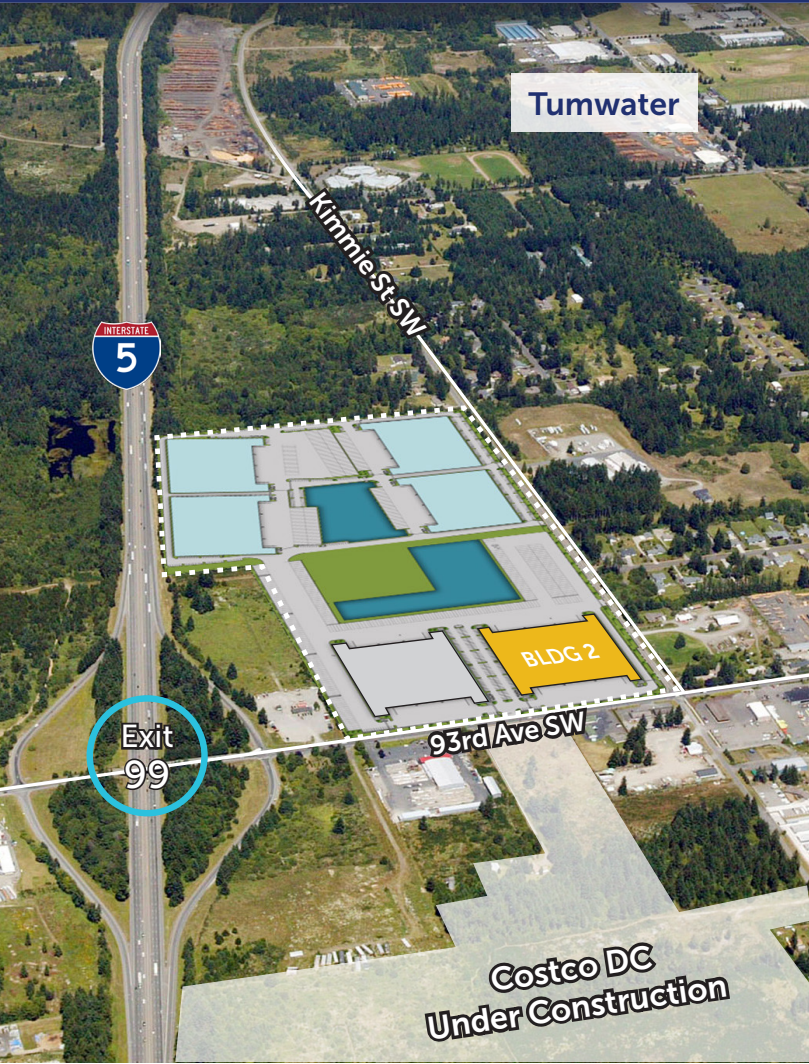
CORPORATE CENTER



TUMWATER, WA

TUMWATER

CORPORATE CENTER



NEIGHBORING BUSINESSES:



Exclusive Advisors:



SCOTT PRICE
253 779 2419
sprice@neilwalter.com

JOEL JONES
253 779 2422
jjones@neilwalter.com

STEVE SHAUL
213 446 7714
sshaul@crowholdings.com

PHIL PRASSAS
312 952 7314
pprassas@crowholdings.com

CROW HOLDINGS
INDUSTRIAL

All information references in this document are approximate. The information contained herein is contained from sources deemed reliable. It is provided without representation, warranty, or guarantee, expressed or implied as to accuracy. Prospective buyer or tenant should conduct its own independent investigation relating to the property, government codes and regulations, allowed uses, and all other matters, regardless of whether they are referred to or contained in this document.