

# FIFE BUSINESS CENTER

4624-4630 16TH ST E | FIFE, WA

NEW OWNERSHIP

MCA REALTY

FOR LEASE - 2 SUITES AVAILABLE

FLEX WAREHOUSE/OFFICE SPACE

Free Rent Available  
**FREE RENT AVAILABLE**  
Free Rent Available

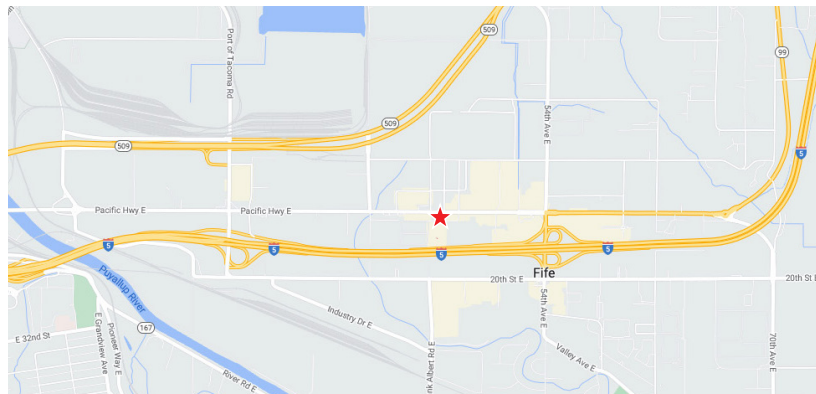


## LEASE INFORMATION

SUITE	AVAILABLE SIZE	LOADING
B9-10	4,543 SF	3 GL Doors
B1	1,470 SF	1 GL Door

## PROPERTY HIGHLIGHTS

- New Cap-Ex Upgrades Completed
- Nearby amenities include food service, retail, banking, etc.
- Excellent I-5 and Port of Tacoma access
- Contact broker for lease rate



**JOHN DEHAN**  
253.779.2433

[jdehan@neilwalter.com](mailto:jdehan@neilwalter.com)

**NICK RATZKE, SIOR**  
253.779.2414

[nratzke@neilwalter.com](mailto:nratzke@neilwalter.com)

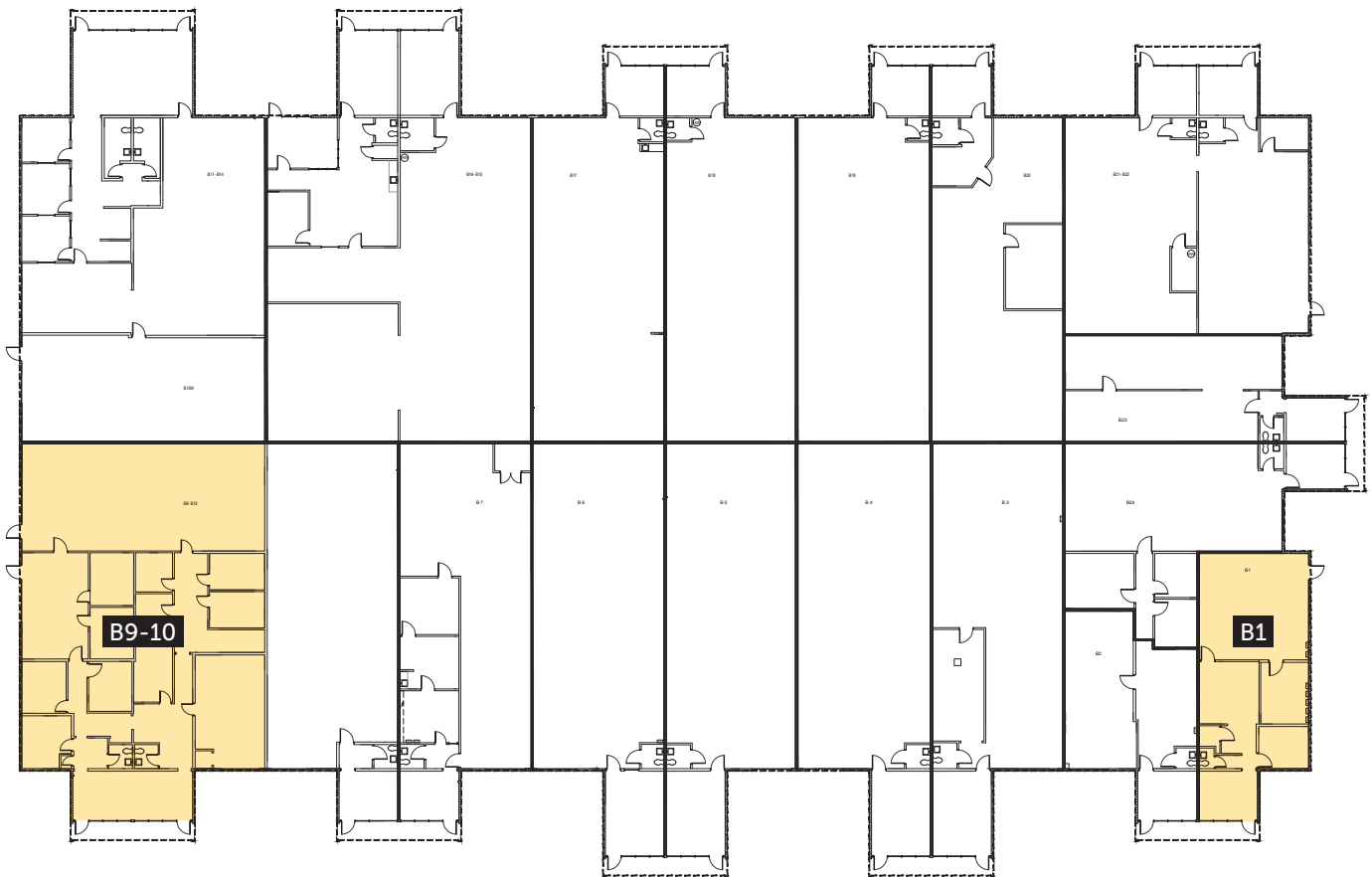
All information references in this document are approximate. The information contained herein is contained from sources deemed reliable. It is provided without representation, warranty, or guarantee, expressed or implied as to accuracy. Prospective buyer or tenant should conduct its own independent investigation relating to the property, government codes and regulations, allowed uses, and all other matters, regardless of whether they are referred to or contained in this document.

# FIFE BUSINESS CENTER

4624-4630 16TH ST E | FIFE, WA

## BUILDING B

SUITE	AVAILABLE SIZE	LOADING
B9-10*	4,543 SF	3 GL Doors
B1	1,470 SF	1 GL Door



\*Some office is being demolished

**JOHN DEHAN**

253.779.2433

jdehan@neilwalter.com

**NICK RATZKE, SIOR**

253.779.2414

nratzke@neilwalter.com

1940 East D St, #100

Tacoma, WA 98421

253.779.8400

www.neilwalter.com

All information references in this document are approximate. The information contained herein is contained from sources deemed reliable. It is provided without representation, warranty, or guarantee, expressed or implied as to accuracy. Prospective buyer or tenant should conduct its own independent investigation relating to the property, government codes and regulations, allowed uses, and all other matters, regardless of whether they are referred to or contained in this document.