

FIFE BUSINESS CENTER

4624-4630 16TH ST E | FIFE, WA

NEW OWNERSHIP



FOR LEASE - 3 SUITES AVAILABLE

FLEX WAREHOUSE/OFFICE SPACE

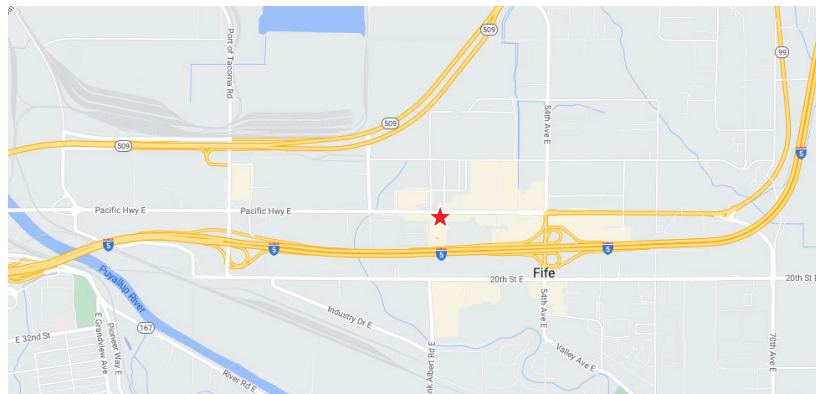


LEASE INFORMATION

SUITE	AVAILABLE SIZE	LOADING	LEASE RATE
B9-10	4,543 SF	3 GL Door	\$1.20/Mo, NNN
B17	2,432 SF	1 GL Door	\$1.25/Mo, NNN
B1	1,470 SF	1 GL Door	\$1.30/Mo, NNN

PROPERTY HIGHLIGHTS

- New Cap-Ex Upgrades Completed
- Nearby amenities include food service, retail, banking, etc.
- Excellent I-5 and Port of Tacoma access



JOHN DEHAN
253.779.2433

jdehan@neilwalter.com

NICK RATZKE, SIOR
253.779.2414

nratzke@neilwalter.com

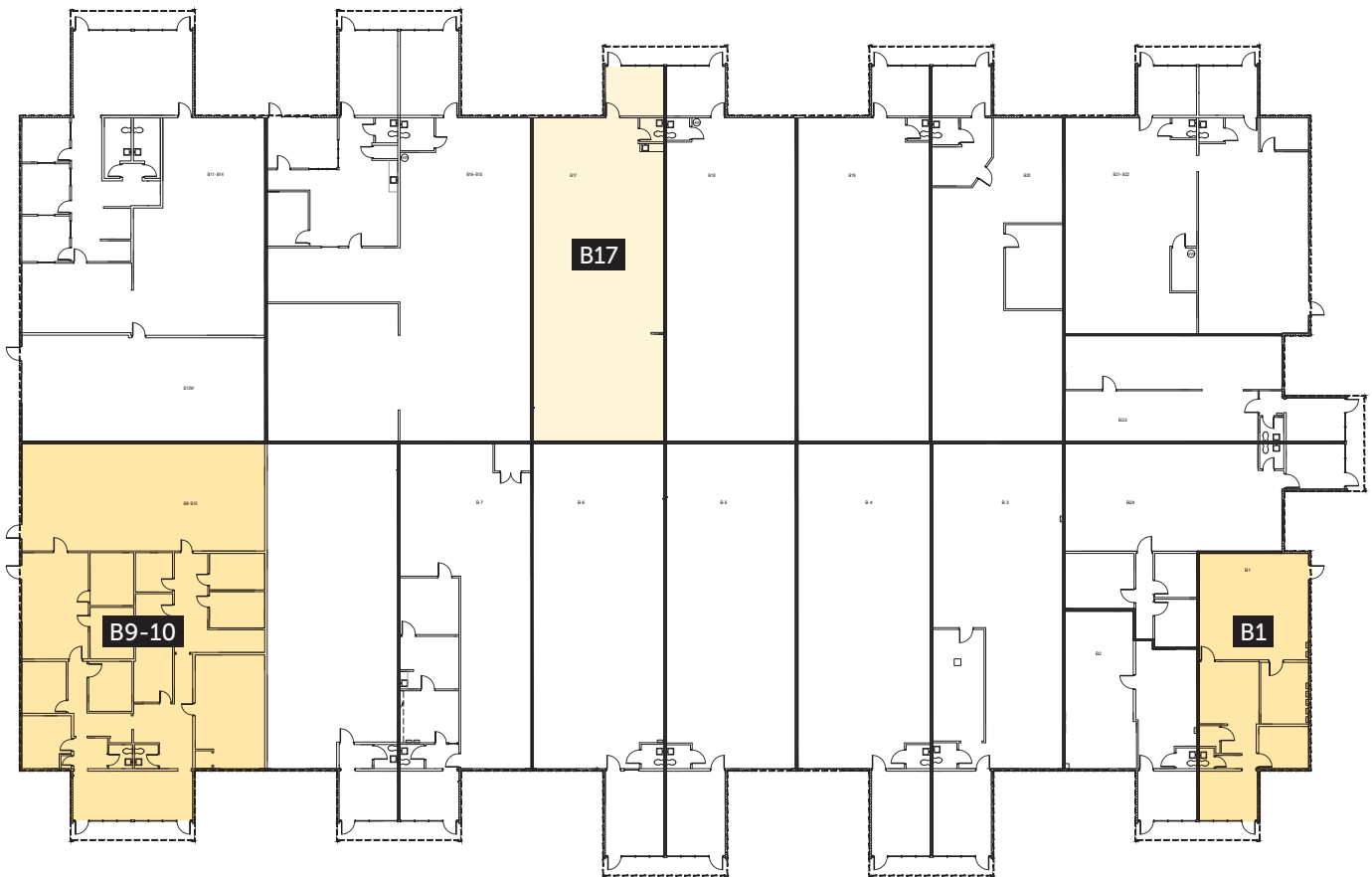
All information references in this document are approximate. The information contained herein is contained from sources deemed reliable. It is provided without representation, warranty, or guarantee, expressed or implied as to accuracy. Prospective buyer or tenant should conduct its own independent investigation relating to the property, government codes and regulations, allowed uses, and all other matters, regardless of whether they are referred to or contained in this document.

FIFE BUSINESS CENTER

4624-4630 16TH ST E | FIFE, WA

BUILDING B

SUITE	AVAILABLE SIZE	LOADING	LEASE RATE
B9-10*	4,543 SF	3 GL Door	\$1.20/Month
B17	2,432 SF	1 GL Door	\$1.25/Month
B1	1,470 SF	1 GL Door	\$1.30/Month



*Some office is being demolished

JOHN DEHAN

253.779.2433

jdehan@neilwalter.com

NICK RATZKE, SIOR

253.779.2414

nratzke@neilwalter.com

1940 East D St, #100

Tacoma, WA 98421

253.779.8400

www.neilwalter.com

All information references in this document are approximate. The information contained herein is contained from sources deemed reliable. It is provided without representation, warranty, or guarantee, expressed or implied as to accuracy. Prospective buyer or tenant should conduct its own independent investigation relating to the property, government codes and regulations, allowed uses, and all other matters, regardless of whether they are referred to or contained in this document.