

PIONEER LOGISTICS

NEW PANATTONI DEVELOPMENT IN PUYALLUP

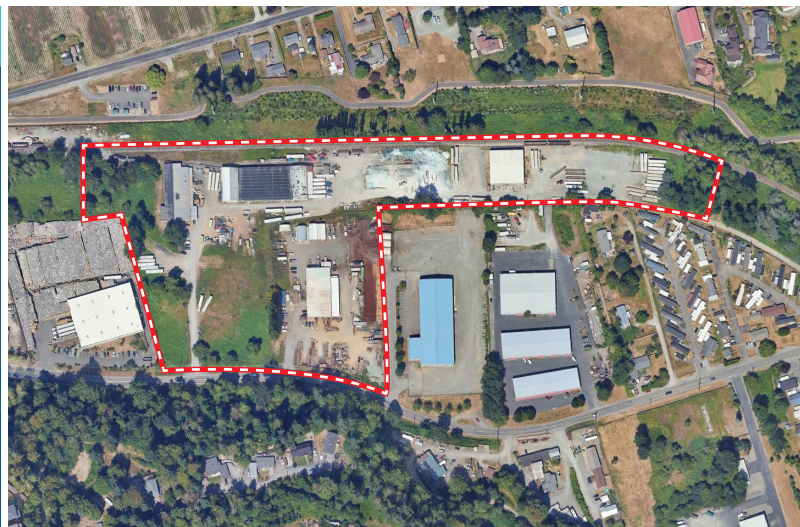
14021 E PIONEER | PUYALLUP, WA 98372

RE-DEVELOPMENT FOR WAREHOUSE



PROPERTY INFORMATION

- 211,153 SF building area
- 729,422 SF land (16.74 Acres)
- 29% coverage
- 210 parking stalls and 102 additional trailer stalls
- 34 DH doors and 2 GL doors
- Rail access
- Prime location in sought after Puyallup
- Estimated completion date - summer of 2025
- 36' clear height



NICK RATZKE, SIOR
253.779.2414
nratzke@neilwalter.com

BRUCE VALENTINE
253.779.2400
bvalentine@neilwalter.com

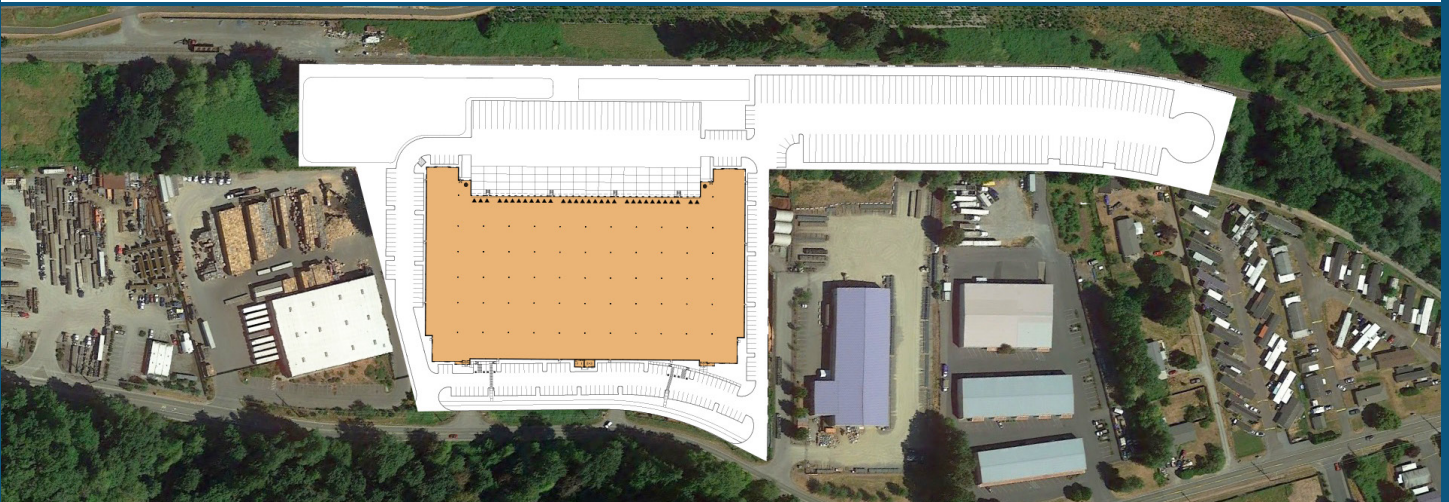
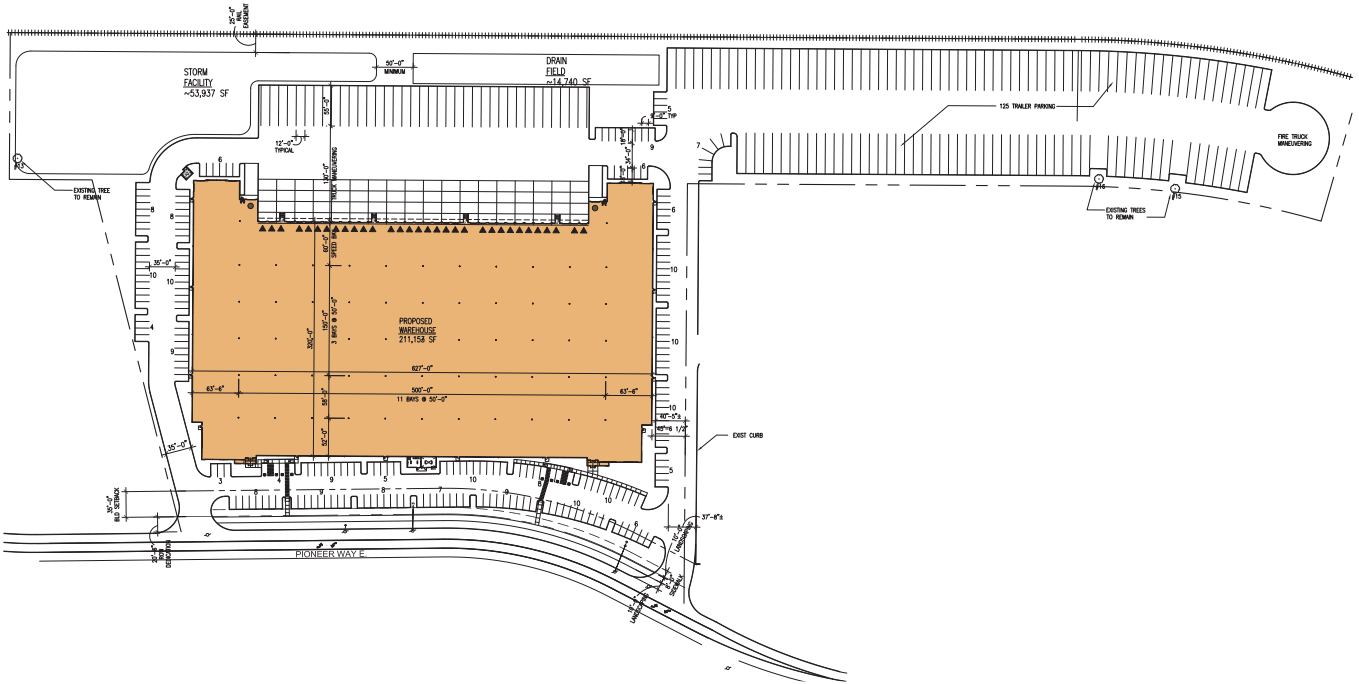
CAMERON VALENTINE
253.779.2427
cvalentine@neilwalter.com

All information references in this document are approximate. The information contained herein is contained from sources deemed reliable. It is provided without representation, warranty, or guarantee, expressed or implied as to accuracy. Prospective buyer or tenant should conduct its own independent investigation relating to the property, government codes and regulations, allowed uses, and all other matters, regardless of whether they are referred to or contained in this document.

NEW PANATTONI DEVELOPMENT IN PUYALLUP

14021 E PIONEER | PUYALLUP, WA 98372

211,153 SF BUILDING



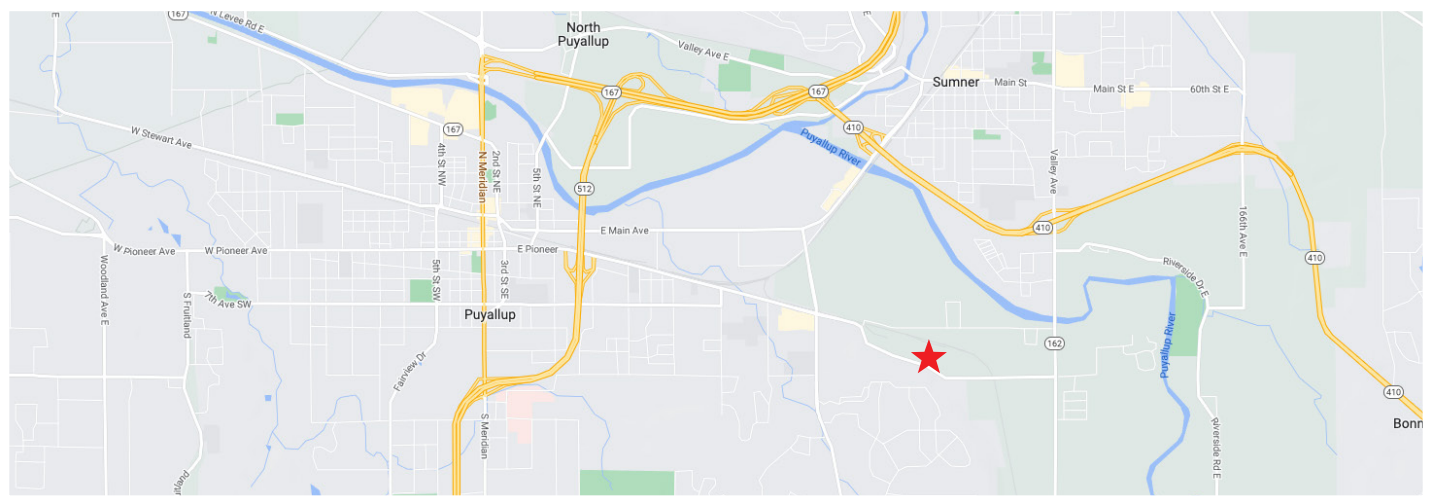
NICK RATZKE, SIOR
253.779.2414
nratzke@neilwalter.com

BRUCE VALENTINE
253.779.2400
bvalentine@neilwalter.com

CAMERON VALENTINE
253.779.2427
cvalentine@neilwalter.com

NEW PANATTONI DEVELOPMENT IN PUYALLUP

14021 E PIONEER | PUYALLUP, WA 98372



NICK RATZKE, SIOR
253.779.2414
nratzke@neilwalter.com

BRUCE VALENTINE
253.779.2400
bvalentine@neilwalter.com

CAMERON VALENTINE
253.779.2427
cvalentine@neilwalter.com