

THE DOCK

FOR LEASE: 5 SUITES AVAILABLE - 400 SF – 5,760 SF

535 DOCK STREET | TACOMA, WA

WATERFRONT OFFICE SUITES

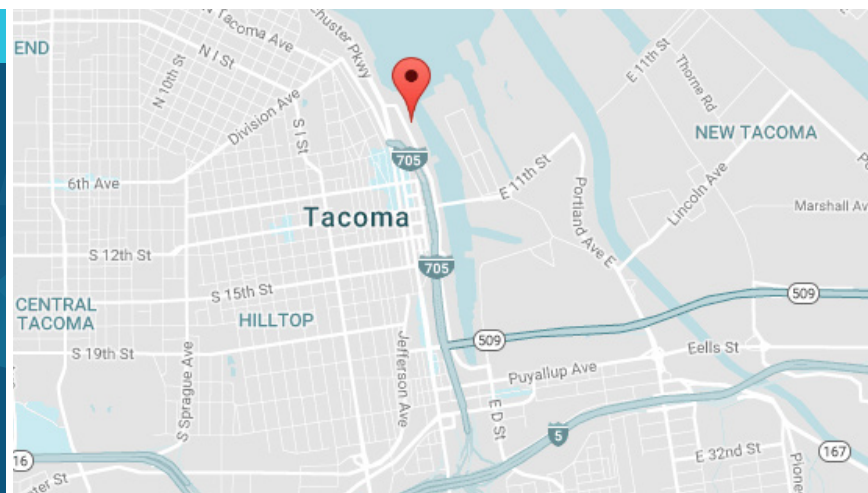


LEASE INFORMATION

Suite	Office Size	Lease Rate	Lease Type	Available Date
200	5,760 SF	Call Broker	Mod Gross	1/1/2025
103	1,950 SF	Call Broker	Mod Gross	1/1/2025
209	1,178 SF	Call Broker	Mod Gross	Now
107	1,042 SF	Call Broker	Mod Gross	Now
210	400 SF	Call Broker	Mod Gross	Now

PROPERTY FEATURES

- Ample Parking
- Located on the Thea Foss Waterway
- Beautiful decks over water
- Located adjacent to Thea's Park and Waterfront Boardwalk
- Restaurant located in building
- Excellent I-5 and I-705 access

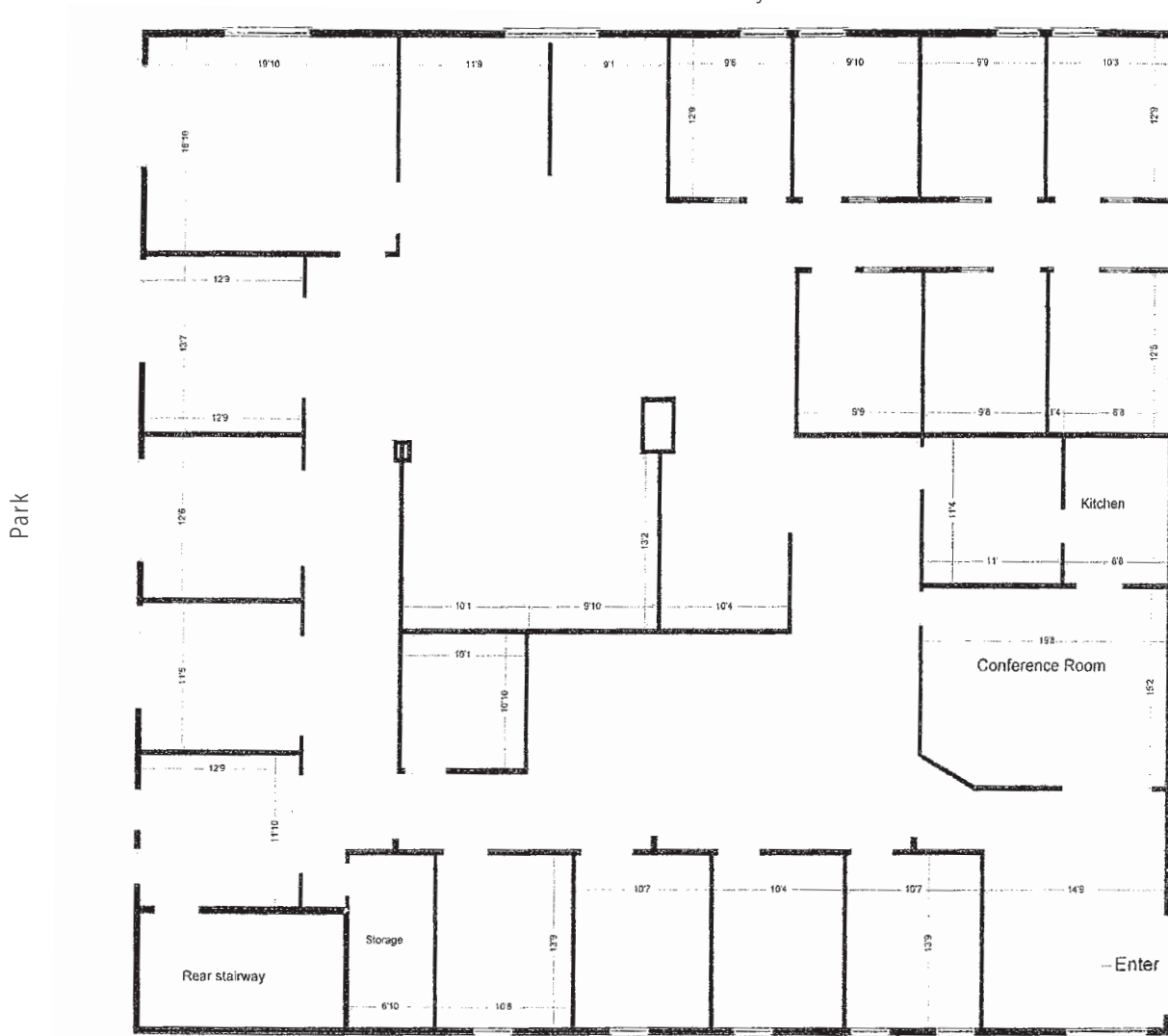


BRIANA HICKEY
253.779.2424
bhickey@neilwalter.com

All information references in this document are approximate. The information contained herein is contained from sources deemed reliable. It is provided without representation, warranty, or guarantee, expressed or implied as to accuracy. Prospective buyer or tenant should conduct its own independent investigation relating to the property, government codes and regulations, allowed uses, and all other matters, regardless of whether they are referred to or contained in this document.

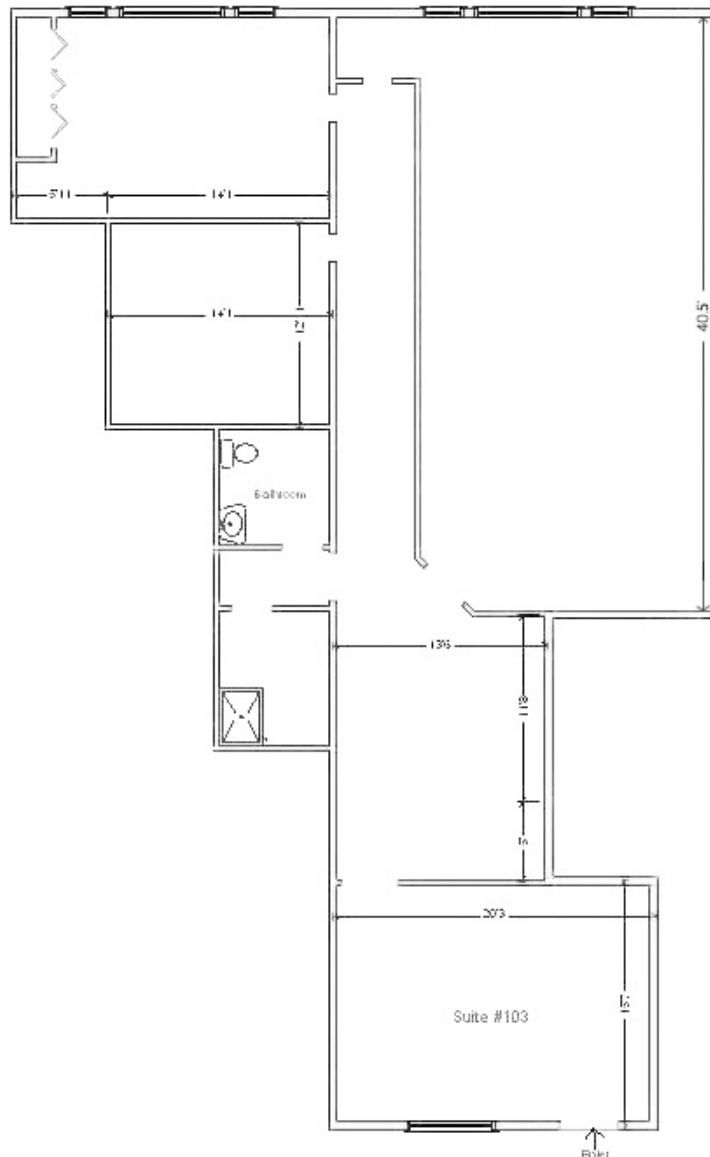
SUITE 200 5,760 SF

Thea Foss Waterway



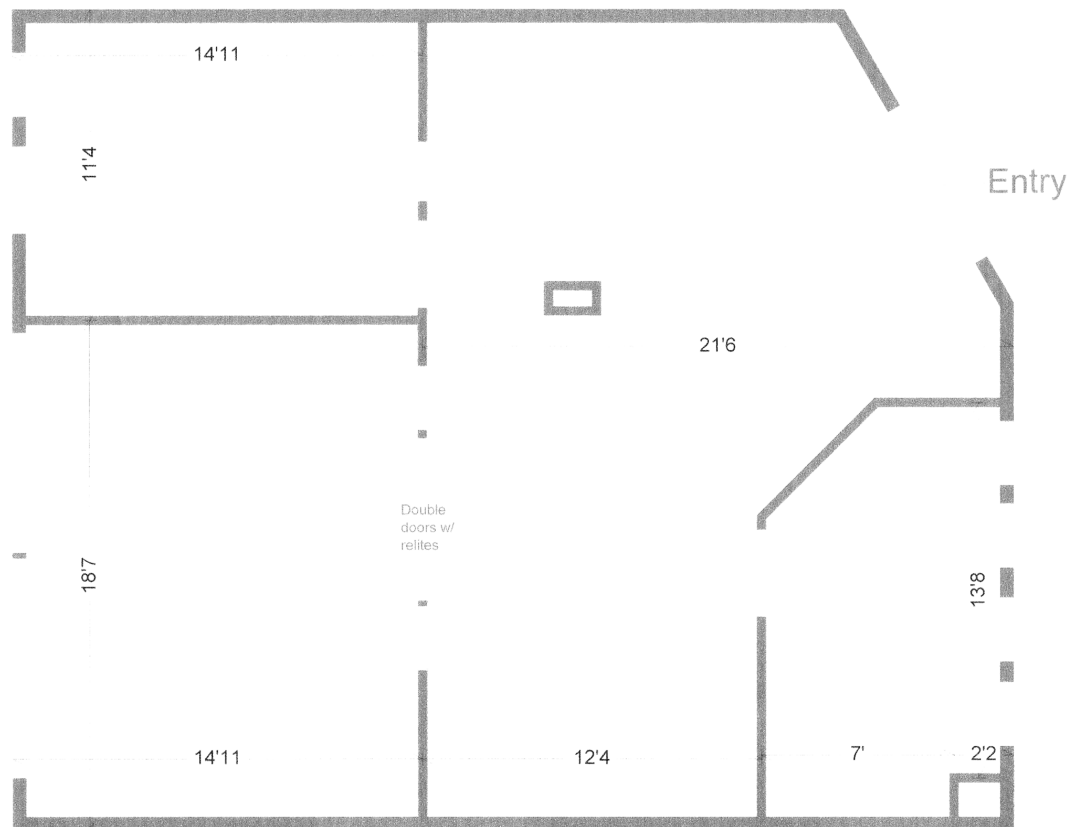
SUITE 103 1,950 SF

Thea Foss Waterway

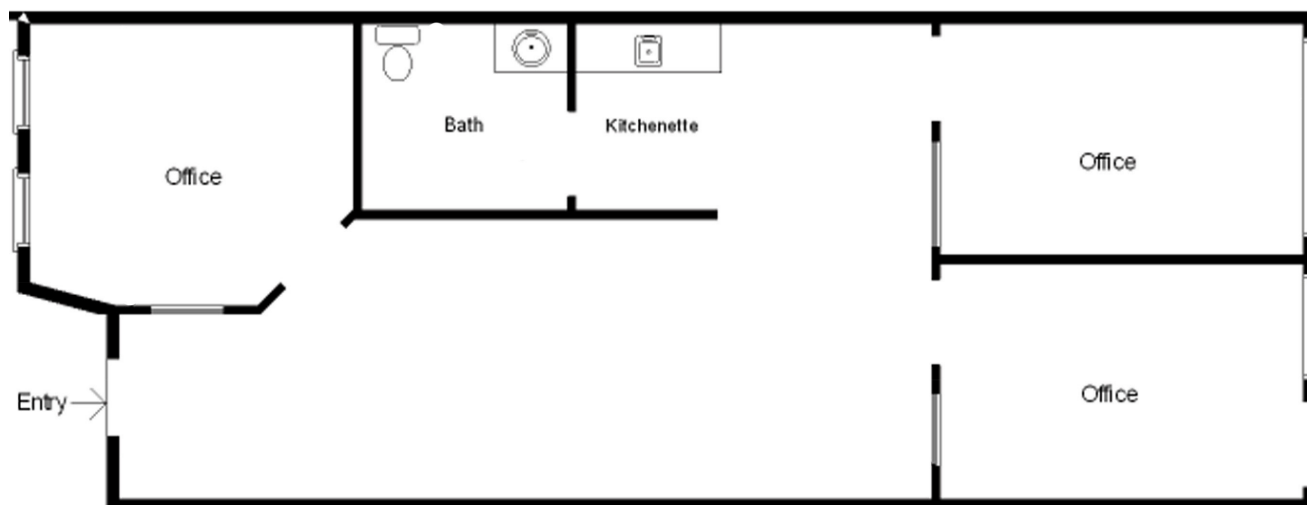


SUITE 209 1,178 SF

Thea Foss Waterway

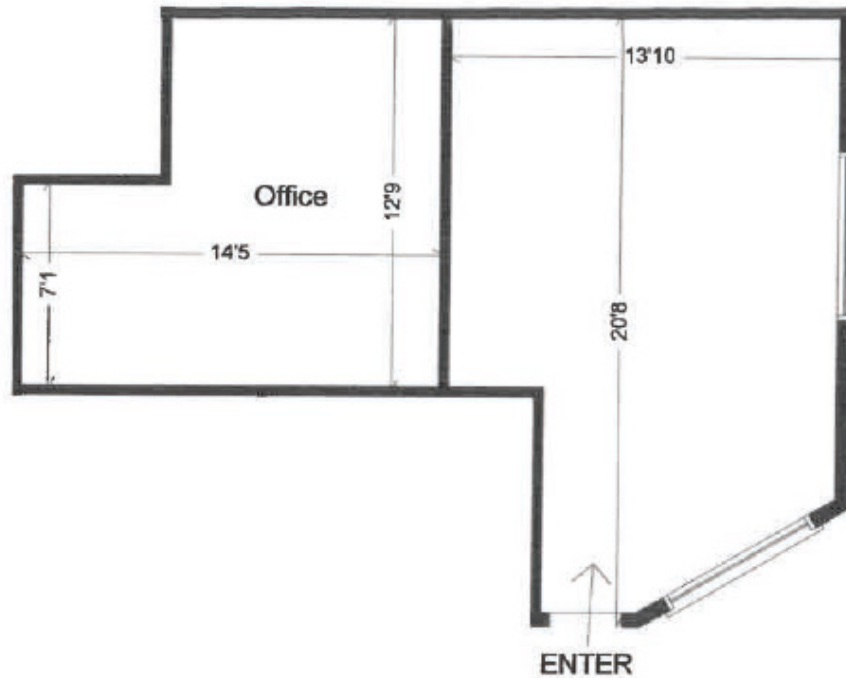


SUITE 107 1,042 SF



SUITE 210 400 SF

Thea Foss Waterway



THE DOCK

535 DOCK STREET | TACOMA, WA



BRIANA HICKEY
253.779.2424
bhickey@neilwalter.com

1940 East D St #100
Tacoma, WA 98421
253.779.8400
www.neilwalter.com

All information references in this document are approximate. The information contained herein is contained from sources deemed reliable. It is provided without representation, warranty, or guarantee, expressed or implied as to accuracy. Prospective buyer or tenant should conduct its own independent investigation relating to the property, government codes and regulations, allowed uses, and all other matters, regardless of whether they are referred to or contained in this document.