

FLEX 194

FOR LEASE: 1 UNIT AVAILABLE - 7,100 SF

5872 S 194TH STREET | KENT, WA 98032



PROPERTY FEATURES



High Image Office/
Flex Building



Abundant Parking



Great Freeway Access

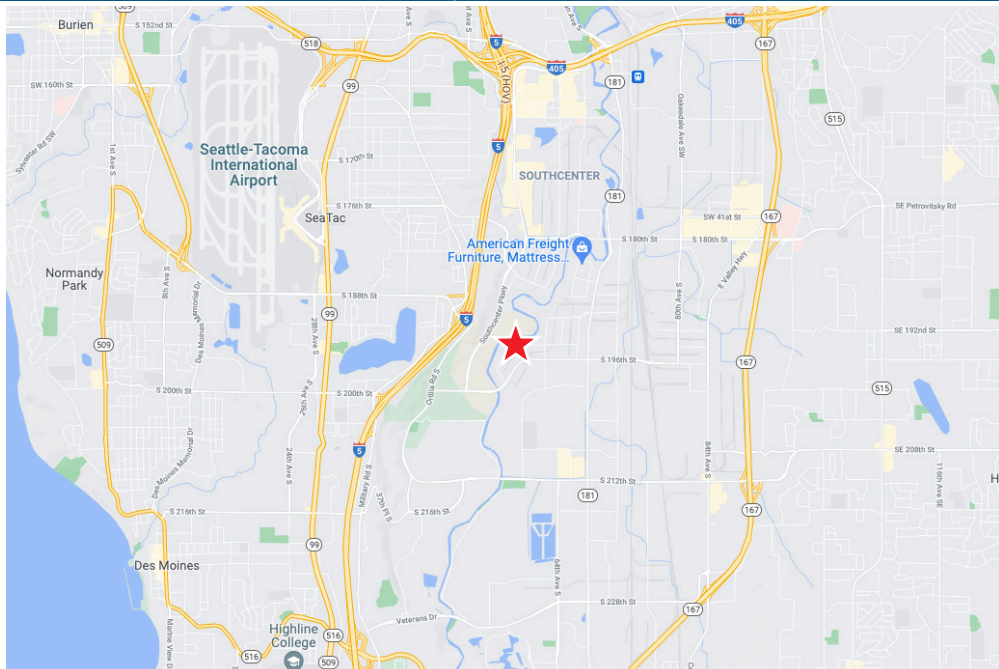
LEASE INFORMATION

Suite 5872: 7,100 SF Total
6,300 SF Office
1 Grade Level Door
Available Now

Lease Rate: \$1.10/SF Blended + NNN

Additional Highlights

- Full HVAC in office
- Direct access to regional trail system
- Easy access to major freeways
- Well-maintained building with ownership on site



KERMIT JORGENSEN
206.787.1475
kjorgensen@neilwalter.com

MAX WHITE
206.787.1463
mwhite@neilwalter.com

All information references in this document are approximate. The information contained herein is contained from sources deemed reliable. It is provided without representation, warranty, or guarantee, expressed or implied as to accuracy. Prospective buyer or tenant should conduct its own independent investigation relating to the property, government codes and regulations, allowed uses, and all other matters, regardless of whether they are referred to or contained in this document.

FLEX 194

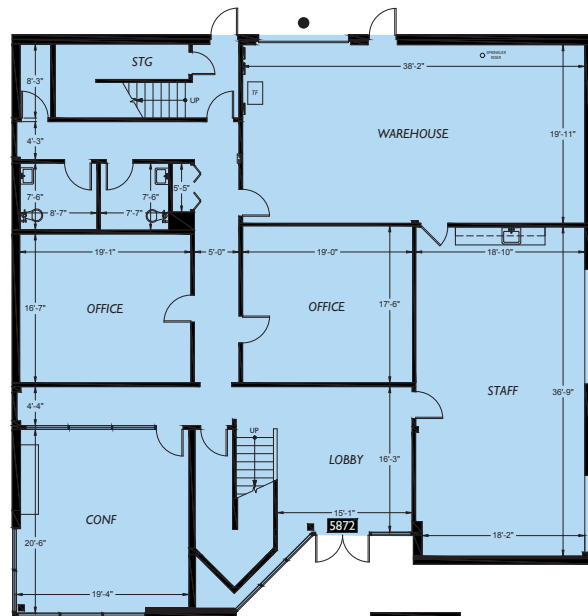
5872 S 194TH STREET | KENT, WA 98032



Suite 5872 - 7,100 SF Total



Second Floor



First Floor

- Grade Level Door

KERMIT JORGENSEN
206.787.1475
kjorgensen@neilwalter.com

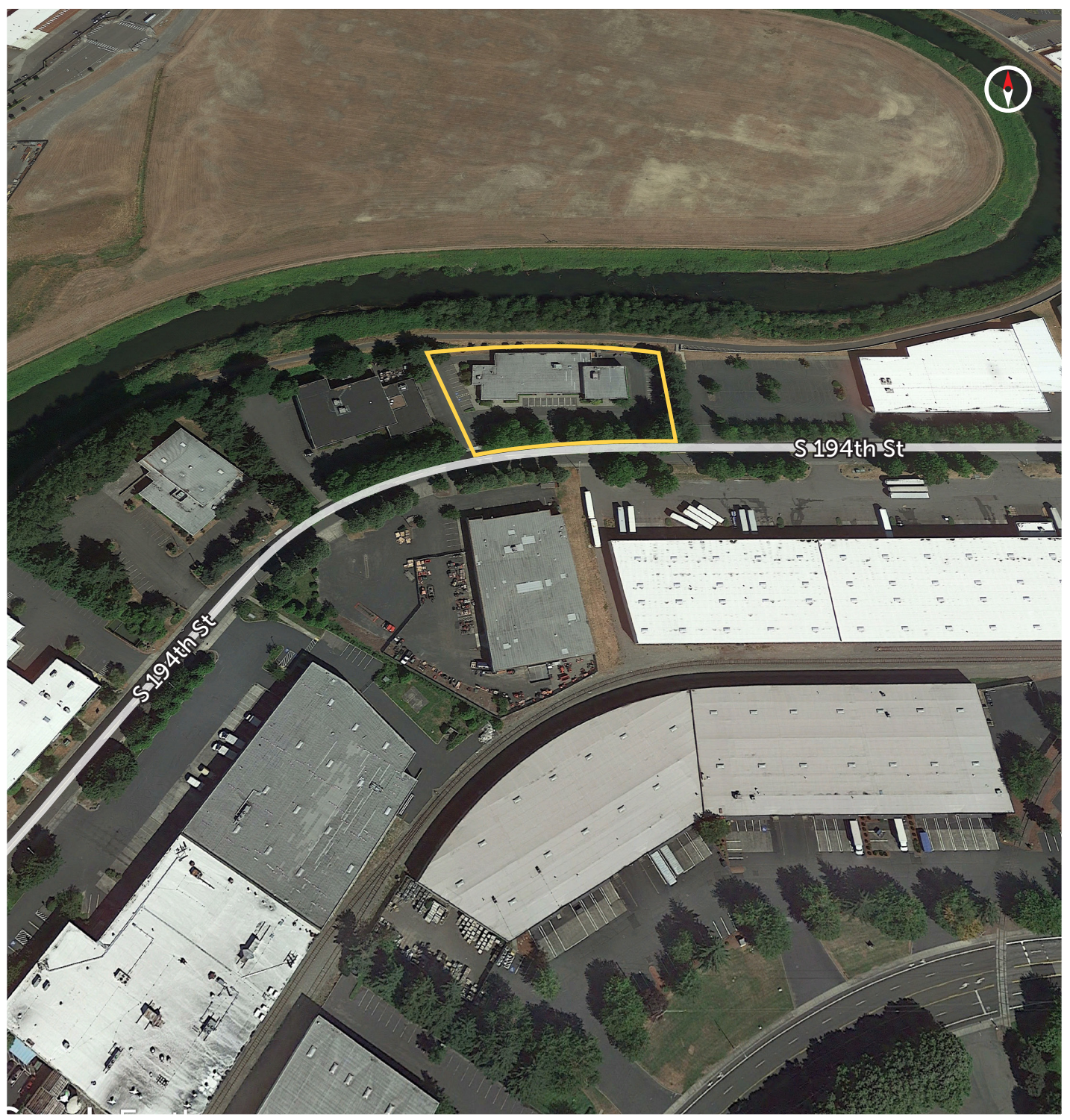
MAX WHITE
206.787.1463
white@neilwalter.com

550 S Michigan St
Seattle, WA 98108
206.787.1800
www.neilwalter.com

All information references in this document are approximate. The information contained herein is contained from sources deemed reliable. It is provided without representation, warranty, or guarantee, expressed or implied as to accuracy. Prospective buyer or tenant should conduct its own independent investigation relating to the property, government codes and regulations, allowed uses, and all other matters, regardless of whether they are referred to or contained in this document.

FLEX 194

5872 S 194TH STREET | KENT, WA 98032



KERMIT JORGENSEN
206.787.1475
kjorgensen@neilwalter.com

MAX WHITE
206.787.1463
white@neilwalter.com

550 S Michigan St
Seattle, WA 98108
206.787.1800
www.neilwalter.com

All information references in this document are approximate. The information contained herein is contained from sources deemed reliable. It is provided without representation, warranty, or guarantee, expressed or implied as to accuracy. Prospective buyer or tenant should conduct its own independent investigation relating to the property, government codes and regulations, allowed uses, and all other matters, regardless of whether they are referred to or contained in this document.